

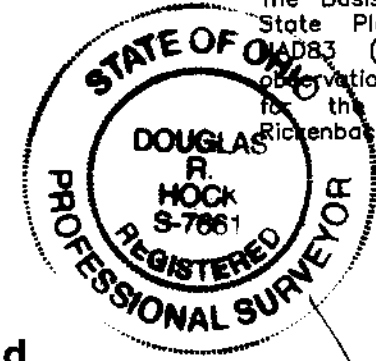
Parcel Survey 3.090 Acres

Hamilton Township, Franklin County, Ohio
Section 1 and 2, Township 3, Range 22,
Congress Lands East of the Scioto

This exhibit was prepared from information obtained from the Franklin County Auditor's Office, the Franklin County Recorder's Office and information obtained from an actual field survey conducted by Advanced Civil Design, Inc in March of 2017.

All iron pins set are 3/4" diameter, 30" long with a plastic cap inscribed "Advanced 7661".

The Basis of Bearings are based on the Ohio State Plane Coordinate System South Zone, NAD83 (NSRS 2007) as derived from GPS observation. A bearing of S45°35'27"W was held for the northwesterly right-of-way line of Rickenbacker Parkway West.

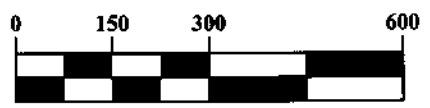


Douglas R. Hock 7/21/17
Douglas R. Hock, P.S. 7661 Date:

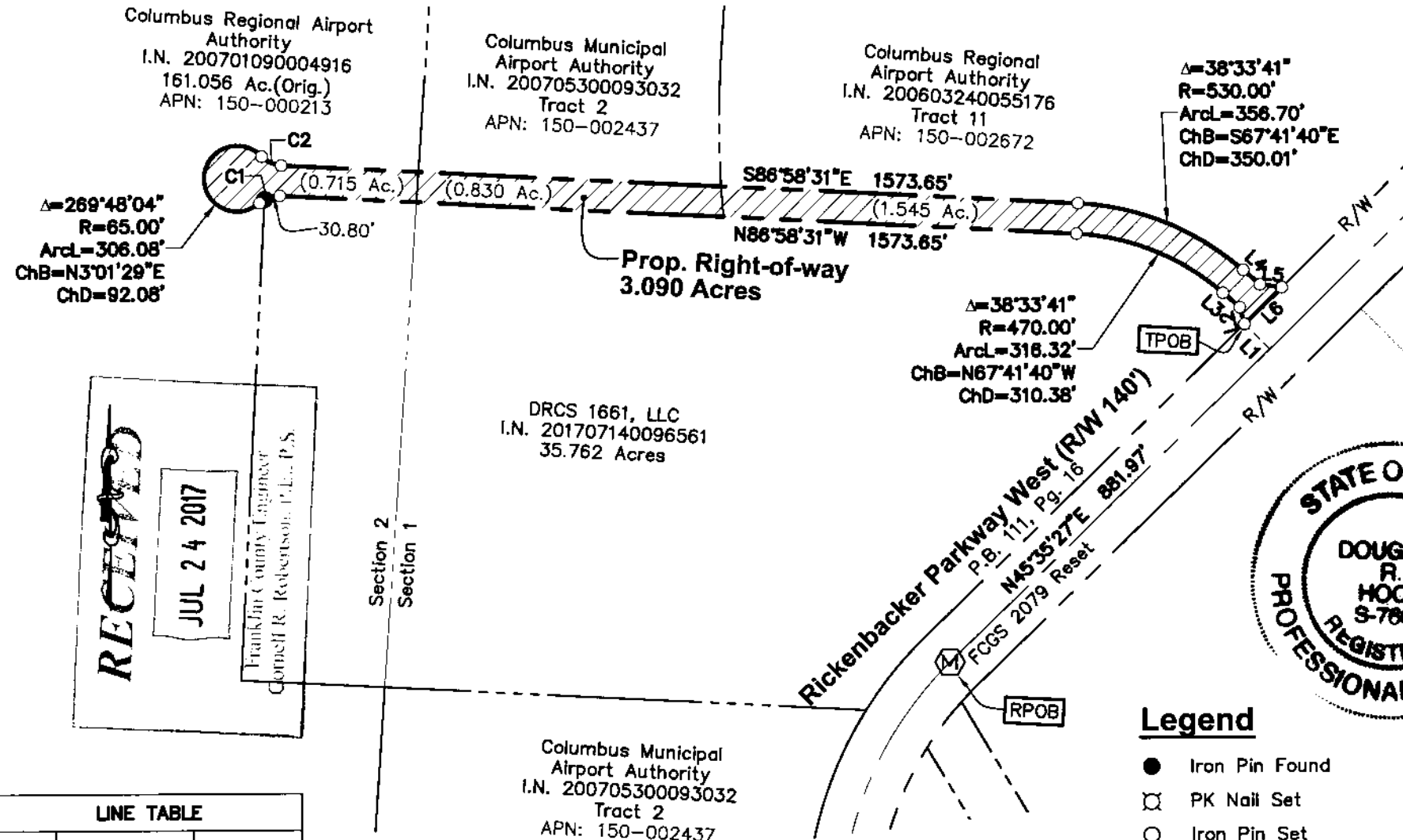
Legend

- Iron Pin Found
- ⊗ PK Nail Set
- Iron Pin Set
- Ⓜ Monument Found

GRAPHIC SCALE



1 inch = 300 feet



LINE TABLE		
LINE	BEARING	DISTANCE
L1	N44°24'36"W	70.00'
L2	N15°04'52"W	34.32'
L3	N48°24'50"W	43.64'
L4	S48°24'50"E	43.64'
L5	S81°44'47"E	42.91'
L6	S45°35'27"W	102.69'

CURVE TABLE					
NO.	DELTA	RADIUS	LENGTH	CHORD BEARING	CHORD DIST.
C1	044°54'02"	55.00'	43.10'	S70°34'28"W	42.01'
C2	044°54'02"	55.00'	43.10'	S64°31'30"E	42.01'

RECEIVED
JUL 24 2017
Franklin County Engineer
Connell R. Robertson, P.L., P.S.

Section 2
Section 1

Columbus Municipal Airport Authority
I.N. 200705300093032
Tract 2
APN: 150-002437

DRCS 1661, LLC
I.N. 201707140096561
35.762 Acres

Columbus Regional Airport Authority
I.N. 200603240055176
Tract 11
APN: 150-002672

Columbus Municipal Airport Authority
I.N. 200705300093032
Tract 2
APN: 150-002437

Columbus Regional Airport Authority
I.N. 200701090004916
161.056 Ac.(Orig.)
APN: 150-000213