

Situate in the State of Ohio, County of Franklin County, City of Gahanna, Quarter Township 2, Township 1, Range 16, United States Military Lands

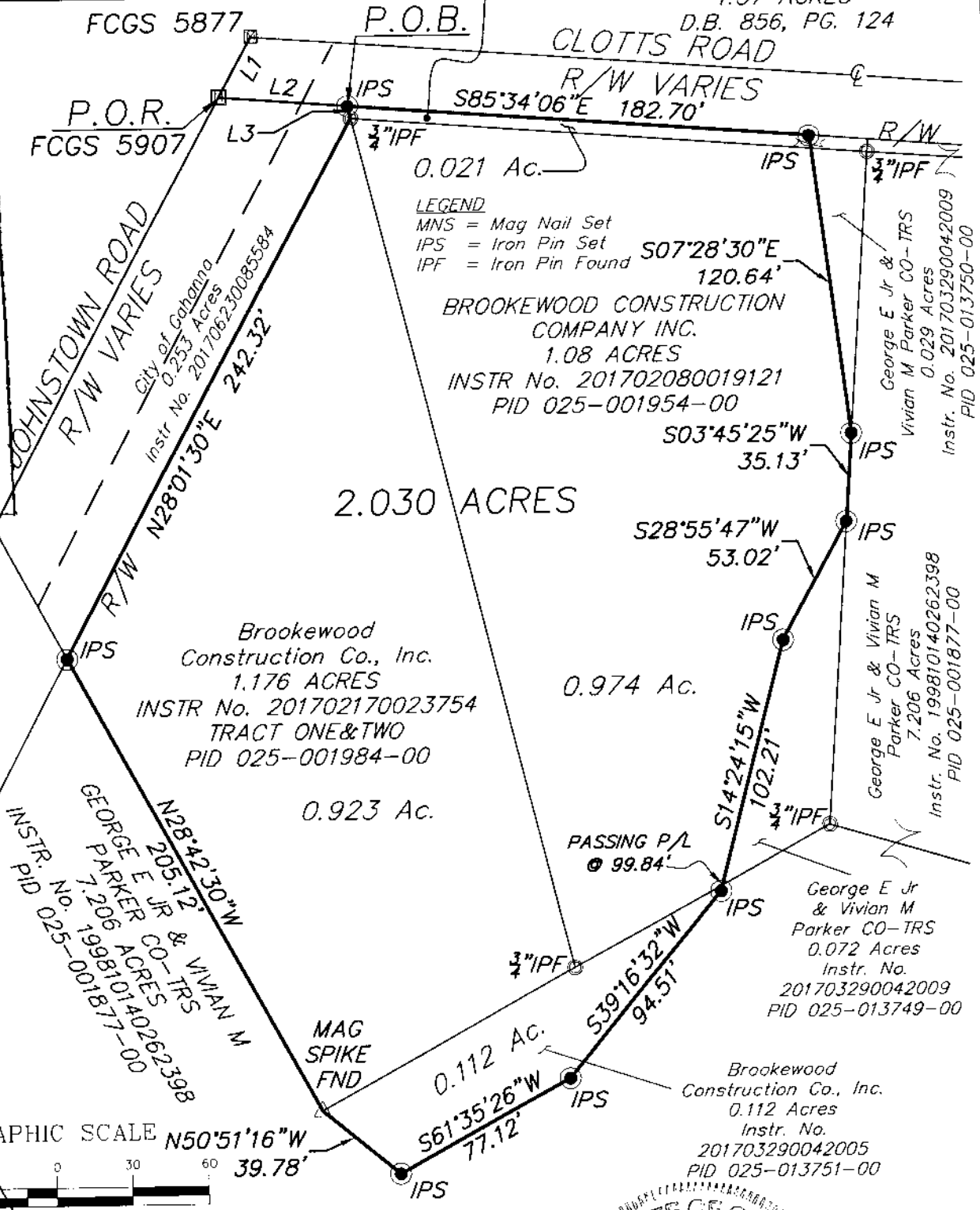
Line Table		
Line #	Direction	Length
L1	N28°01'30"E	27.36'
L2	S85°34'06"E	50.70'
L3	S14°07'29"E	5.27'

Brookwood Construction Co., Inc.
0.024 Acres
INSTR No. 201702170023755
PID 025-004244-00

Franklin County Commissioners
1.37 ACRES
D.B. 856, PG. 124

JUL 14 2017

Franklin County Engineer
Cornell K. Robertson, P.E., P.S.



LEGEND
MNS = Mag Nail Set
IPS = Iron Pin Set
IPF = Iron Pin Found

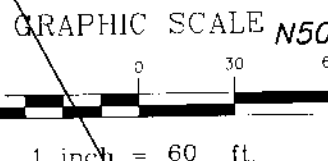
BROOKWOOD CONSTRUCTION COMPANY INC.
1.08 ACRES
INSTR No. 201702080019121
PID 025-001954-00

Brookwood Construction Co., Inc.
1.176 ACRES
INSTR No. 201702170023754
TRACT ONE&TWO
PID 025-001984-00

GEORGE E JR & VIVIAN M PARKER CO-TRS
7.206 ACRES
INSTR No. 199810140262398
PID 025-001877-00

George E Jr & Vivian M Parker CO-TRS
0.072 Acres
Instr. No. 201703290042009
PID 025-013749-00

Brookwood Construction Co., Inc.
0.112 Acres
Instr. No. 201703290042005
PID 025-013751-00



For the purpose of this exhibit a bearing of S 85°34'06"E was held on the north line of a 1.08 acre parcel of land conveyed to BROOKWOOD CONSTRUCTION COMPANY INC. of record in Instrument Number 201702080019121, and is based on the Ohio State Plane Coordinate System, South Zone, NAD83 (2011 adjustment). Said bearing was established by Static and RTK GPS Observations, and was determined by using National Geodetic Survey, OPUS-S service. All references to records being on file in the Office of the Recorder, Franklin County, Ohio. This document is based on a survey completed by or under the supervision of Robert W. Martin in May of the year 2016. All Iron Pin Sets (IPS) are to be a 3/4" (I.D.) x 30" galvanized iron pipe with a cap inscribed PS 8114.



Robert W. Martin 7-14-17
Robert W. Martin, P.S. 8114

EXHIBIT OF
2.030 ACRES

Prepared By:
TAT WATCON
CONSULTING ENGINEERS & SURVEYORS
83 Shull Avenue
Gahanna, Ohio 43230
Ph. (614) 414-7979

DRAWN BY: RWM	SCALE: 1" = 60'	DATE: 7/14/2017
CHECKED BY: JGL	PROJECT:	SHEET NO. 1 OF 1

Z:\PINNACLE POINTE VILLAS\DRAWINGS\SURVEY\CLOTTS CONDO BOUNDARY REV3.DWG - 0 XREFS - PLOTTED BY 80 - July 14, 2017 - 9:21 AM