

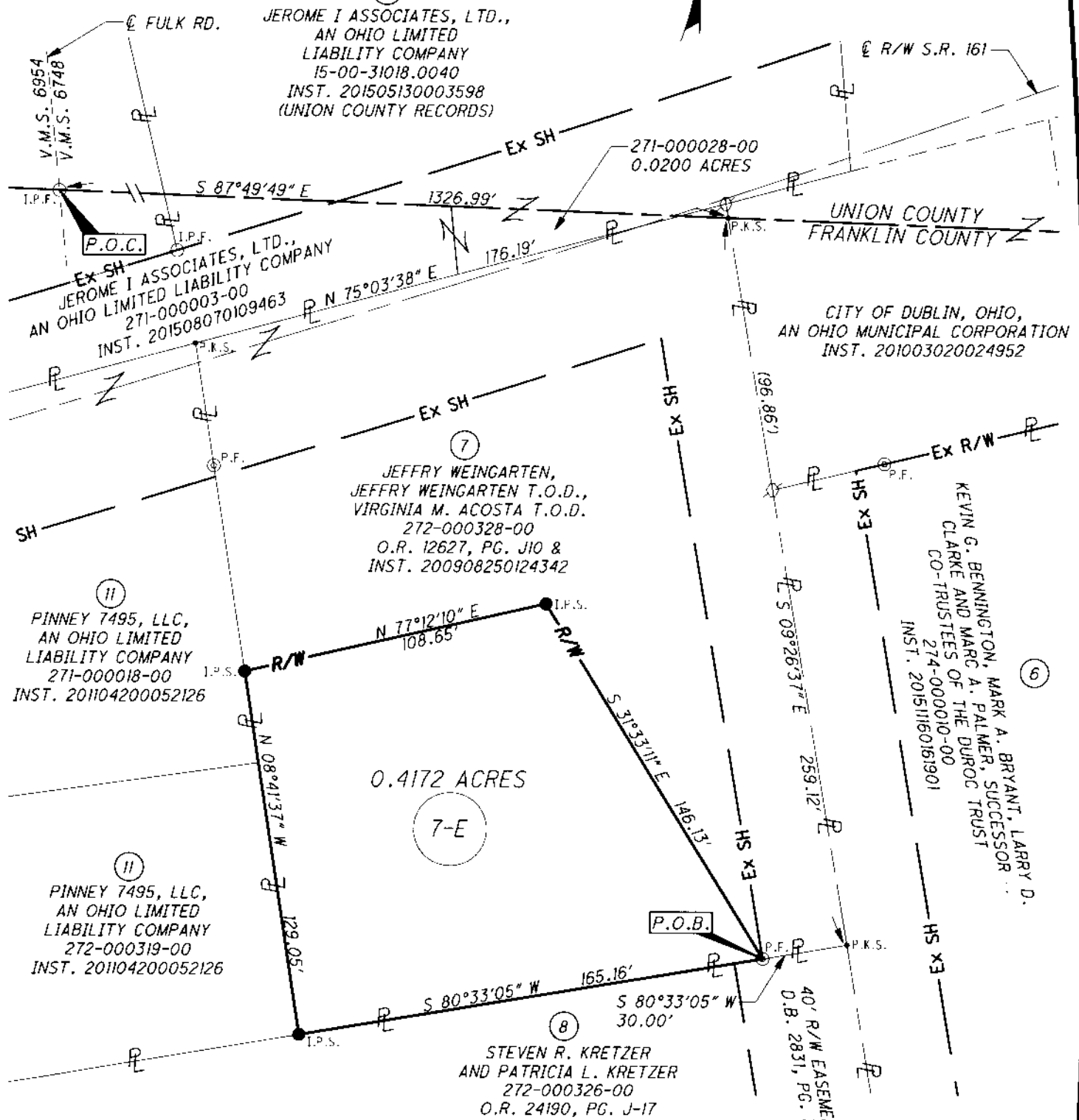
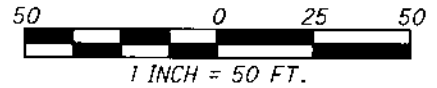


EXHIBIT B
PARCEL 7-E
SR 161/COSGRAY RD. ROUNDABOUT

LEGEND:

- P.O.B. POINT OF BEGINNING
- P.O.C. POINT OF COMMENCEMENT
- I.P.F. 5/8" REBAR (FOUND)
- ⊙ P.F. 3/4" PIPE (FOUND)
- I.P.S. 5/8" x 30" REBAR (SET) W/CAP STAMPED "GPD"
- P.K.S. P.K. NAIL (SET)
- ⊗ RAILROAD SPIKE (FOUND)

STATE OF OHIO
FRANKLIN COUNTY
WASHINGTON TOWNSHIP
V.M.S. 6748



⑪
PINNEY 7495, LLC,
AN OHIO LIMITED
LIABILITY COMPANY
271-000018-00
INST. 201104200052126

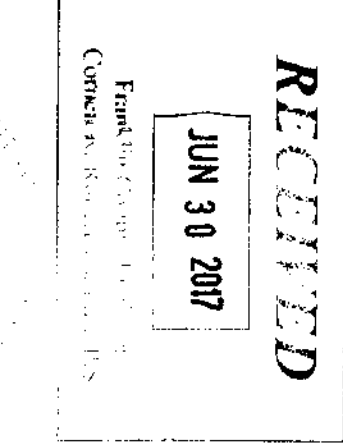
⑪
PINNEY 7495, LLC,
AN OHIO LIMITED
LIABILITY COMPANY
272-000319-00
INST. 201104200052126

⑦
JEFFRY WEINGARTEN,
JEFFRY WEINGARTEN T.O.D.,
VIRGINIA M. ACOSTA T.O.D.
272-000328-00
O.R. 12627, PG. J10 &
INST. 200908250124342

⑧
STEVEN R. KRETZER
AND PATRICIA L. KRETZER
272-000326-00
O.R. 24190, PG. J-17

CITY OF DUBLIN, OHIO,
AN OHIO MUNICIPAL CORPORATION
INST. 201003020024952

⑨
KEVIN G. BENNINGTON, MARK A. BRYANT, LARRY D.
CLARKE AND MARG A. PALMER, SUCCESSOR
CO-TRUSTEES OF THE DUROC TRUST
274-000010-00
INST. 20151160161901



PERTINENT DOCUMENTS USED:
INST. 201104200052126, INST. 201104200052126
INST. 200908250124342, INST. 201508070109463
INST. 201003020024952, INST. 20151160161901

BASIS OF BEARINGS:
BEARINGS ARE BASED ON THE BEARING BETWEEN
FRANKLIN COUNTY ENGINEER'S MONUMENT "FRANK72"
AND FRANKLIN COUNTY GEODETIC SURVEY MONUMENT
"WE130" BEING N 84°36'52" W, AS MEASURED WITH GPS
METHODS USING GRID NORTH, OF THE OHIO STATE
PLANE COORDINATE SYSTEM, SOUTH ZONE (2011).

Steven L. Mullaney
STEVEN L. MULLANEY, P.S. 7900

6/29/2017
DATE