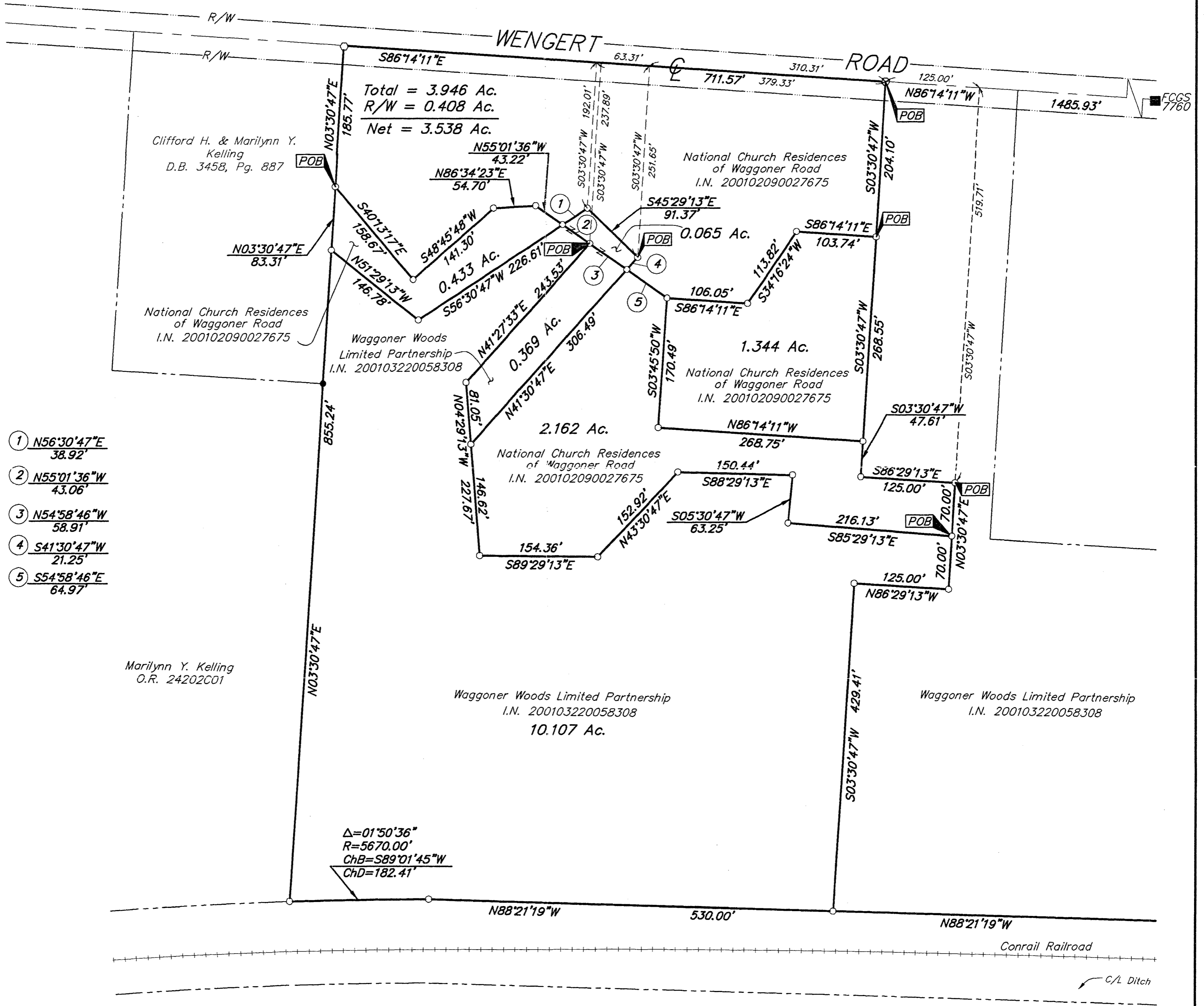


SURVEY OF ACREAGE PARCELS
LOT 18, QTR. TWP. 4, TWP. 1, RNG. 16
UNITED STATES MILITARY LANDS
CITY OF COLUMBUS, FRANKLIN COUNTY, OHIO



- ① N56°30'47"E
38.92'
- ② N55°01'36"W
43.06'
- ③ N54°58'46"W
58.91'
- ④ S41°30'47"W
21.25'
- ⑤ S54°58'46"E
64.97'

- = MON. FND.
- = I.P. FND.
- = I.P. SET
- = MAG. NAIL FND.
- = MAG. NAIL SET
- ▲ = R.R. SPK. FND.
- △ = R.R. SPK. SET
- ◆ = P.K. NAIL FND.

I.P.S Set are 1 3/16" I.D. Iron pipe w/ cap inscribed EMH&T.



GRAPHIC SCALE
(IN FEET)

BASIS OF BEARINGS: Bearings are based on the Ohio State Plane Coordinate System as per NAD83. Control for bearings was from coordinates of monument numbers 7760 & 7776, having a bearing of South 86°14'11" East, between said Monuments, established by the Franklin County Engineering Department.



By Matthew A. Kirk
Professional Surveyor No. 7865

Surveyed & Prepared
By
EVANS, MECHWART, HAMBLETON & TILTON INC.
CONSULTING ENGINEERS & SURVEYORS
170 MILL STREET
GAHANNA, OHIO 43230
614/471-5150

SCALE: 1" = 100'

JULY 13, 2001