

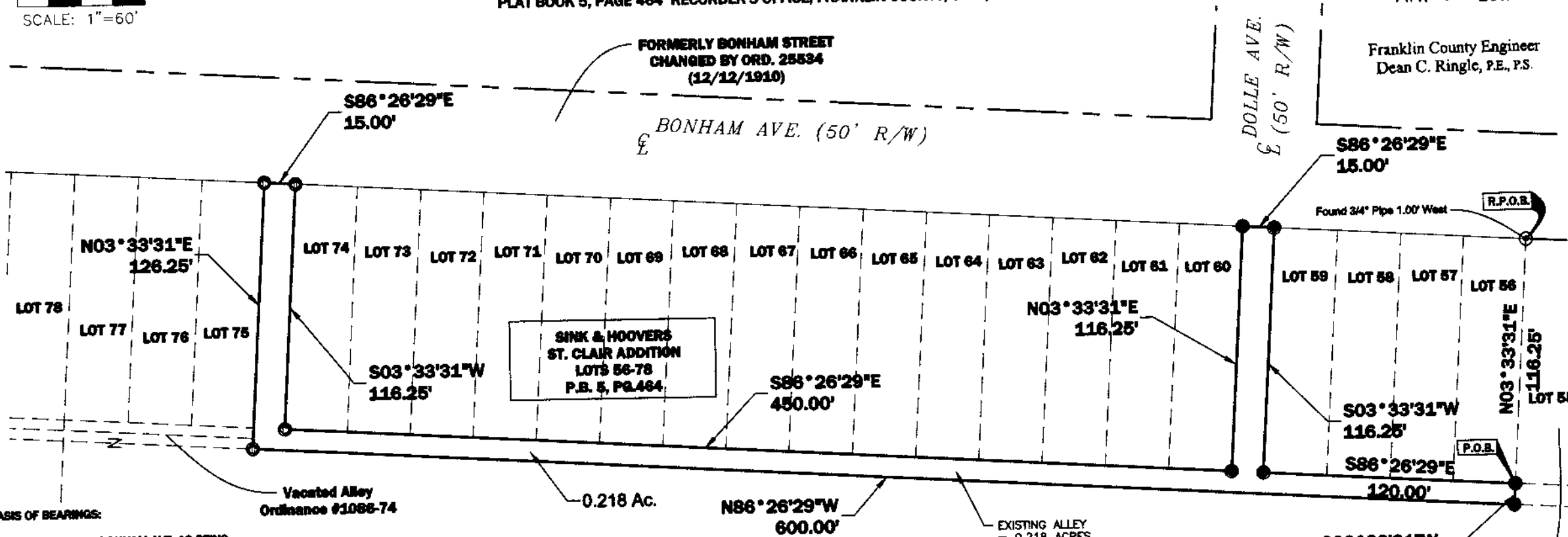
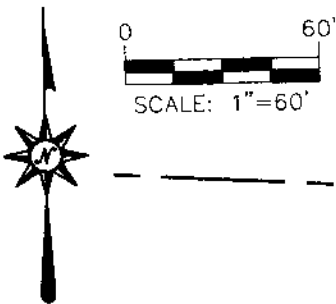
BOUNDARY SURVEY OF A 0.218 ACRE TRACT

SITUATED IN THE STATE OF OHIO, COUNTY OF FRANKLIN, CITY OF COLUMBUS, BEING IN THE FOURTH QUARTER, TOWNSHIP 1, RANGE 18, UNITED STATES MILITARY LANDS, AND BEING PART OF A PLATTED ALLEY IN SINK & HOOVER'S ST. CLAIR ADDITION IN PLAT BOOK 5, PAGE 464 RECORDER'S OFFICE, FRANKLIN COUNTY, OHIO,

RECEIVED

MAY 04 2017

Franklin County Engineer
Dean C. Ringle, P.E., P.S.



BASIS OF BEARINGS:

THE SOUTH LINE OF BONHAM AVE. AS BEING S 86° 26' 29\"

I HEREBY CERTIFY THAT THE ATTACHED PLAT WAS PREPARED FROM INFORMATION OBTAINED FROM AN ACTUAL FIELD SURVEY OF THE PREMISES AND THAT SAID PLAT IS CORRECT TO THE BEST OF MY KNOWLEDGE

REGISTERED SURVEYOR NO. S-7675
STEVEN B. WALTON MARCH 16, 2017



PHIL-RO COMPANY, INC.
16.720 AC.
INSTR.200503240054545

LEGEND	
⊙	Found Iron Pins (As Noted)
●	Set 5/8\"
⊕	Found MAG Nail
⊖	MAG Nail Set
■	Concrete Post Fnd.
(M)	Measured Distance
(D)	Deeded Distance

REFERENCES:
DEEDS AS NOTED
COUNTY MAPS
PREVIOUS SURVEYS
SINK & HOOVER'S
ST. CLAIR ADDITION
LOTS 56-78
P.B.5, PG.464

DWG.: JAF
Check By: SBW
Job No. phil-ro

S 03° 33' 31\"

Office: 740-477-3500
www.ackisonsurveying.com