



Evans, Mechwart, Hambleton & Tilton, Inc.
 Engineers • Surveyors • Planners • Scientists
 5500 New Albany Road, Columbus, OH 43054
 Phone: 614.775.4500 Toll Free: 888.775.3648

emht.com

SURVEY OF ACREAGE PARCEL

SURVEY No. 8231

VIRGINIA MILITARY DISTRICT

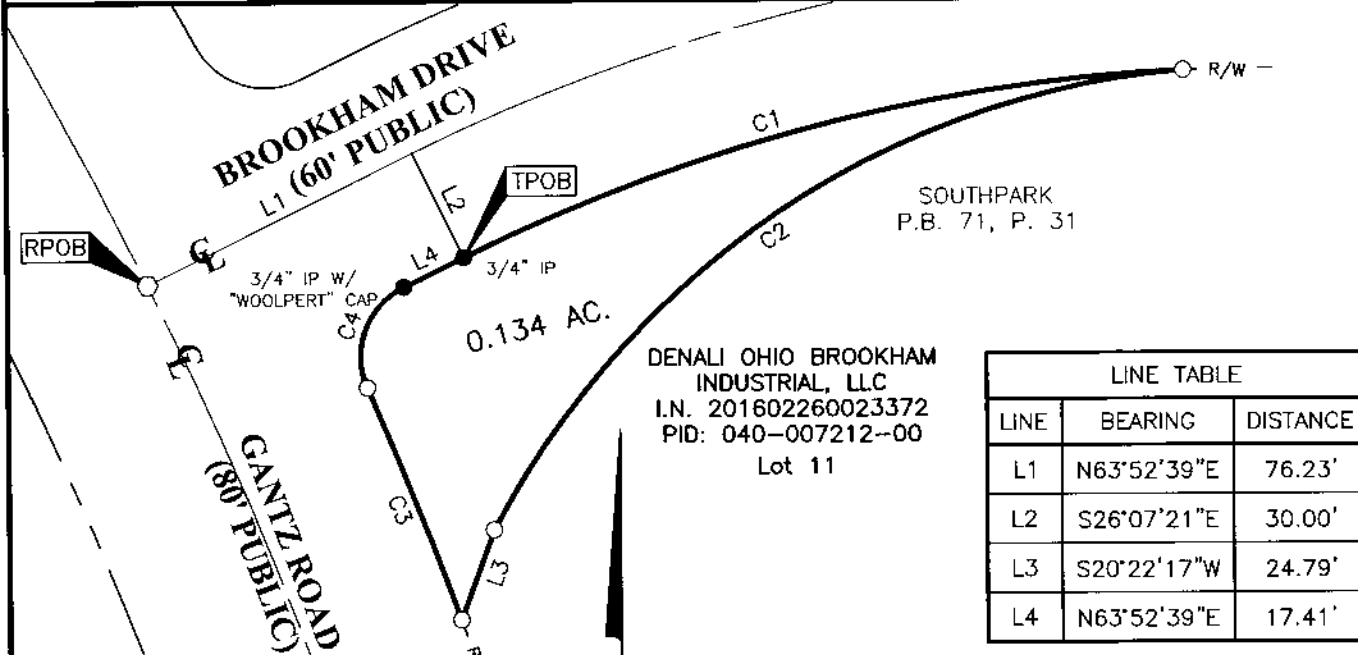
CITY OF GROVE CITY, COUNTY OF FRANKLIN, STATE OF OHIO

Date: January 19, 2016

Scale: 1" = 50'

Job No. 2015-1151

Revised: April 3, 2017



BASIS OF BEARINGS:

The Bearings shown hereon are based on the Ohio State Plane Coordinate System South Zone as per NAD83 (NSRS2007). Control for bearings was from coordinates of monuments FCGS 5539 and FCGS 0024 RESET, having a bearing of North 08° 51' 44" East, established by the Franklin County Engineering Department, using Global Positioning System procedures and equipment.

SURVEY NOTE:

This survey was prepared using documents of record, prior plats of survey, and observed evidence located by an actual field survey.

DENALI OHIO BROOKHAM INDUSTRIAL, LLC
 I.N. 201602260023372
 PID: 040-007212-00
 Lot 11

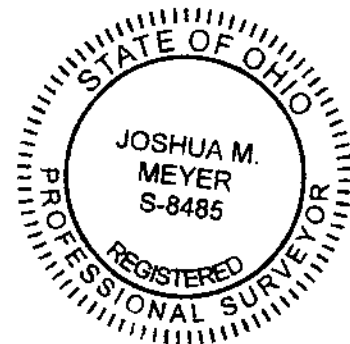
LINE TABLE		
LINE	BEARING	DISTANCE
L1	N63°52'39"E	76.23'
L2	S26°07'21"E	30.00'
L3	S20°22'17"W	24.79'
L4	N63°52'39"E	17.41'

CURVE TABLE					
CURVE	DELTA	RADIUS	ARC	CH. BEARING	CH. DIST.
C1	23°34'25"	470.00'	193.38'	N75°39'52"E	192.02'
C2	57°53'17"	221.34'	223.63'	S56°29'53"W	214.23'
C3	3°34'44"	1040.00'	64.96'	N21°37'46"W	64.95'
C4	87°17'47"	20.00'	30.47'	N20°13'46"E	27.61'

● = I.P. FND.
 ○ = I.P. SET
 ◯ = MAG. NAIL SET
 I.P. Set are 13/16" I.D. iron pipes 30" long with cap inscribed EMHT INC.



GRAPHIC SCALE (in feet)



By Joshua M. Meyer Date 4-3-2017
 Joshua M. Meyer
 Professional Surveyor No. 8485

RECEIVED

APR 03 2017

Franklin County Engineer
 Dean C. Ringle, P.E., P.S.

J:\20151151\DWG\04SHEETS\BOUNDARY\20151151-VS-BNDY-01.DWG plotted by MEYER, JOSH on 4/3/2017 1:49:25 PM last saved by JMEYER on 4/3/2017 1:48:55 PM
 Xrefs: