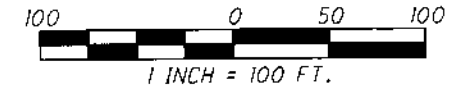


# RIGHT OF WAY EXHIBIT



**BASIS OF BEARINGS:**  
BEARINGS ARE BASED ON THE BEARING BETWEEN FRANKLIN COUNTY ENGINEER'S MONUMENTS "WICKLIFFE" AND "W188RESET" BEING S 83°26'03" E, AS MEASURED ON GRID NORTH, OF THE OHIO STATE PLANE COORDINATE SYSTEM, SOUTH ZONE NAD83(2011).

## FRANKLIN COUNTY CITY OF COLUMBUS QUARTER TOWNSHIP 2, TOWNSHIP 1, RANGE 18 UNITED STATES MILITARY DISTRICT LOT 12 OF PLAT OF RATHBONE D.B. 15, PG. 256-1/2

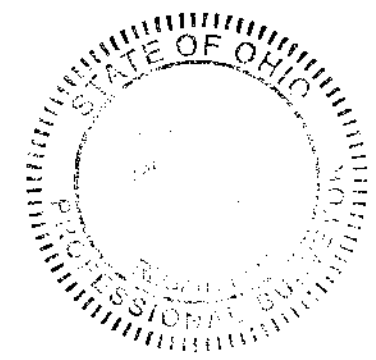
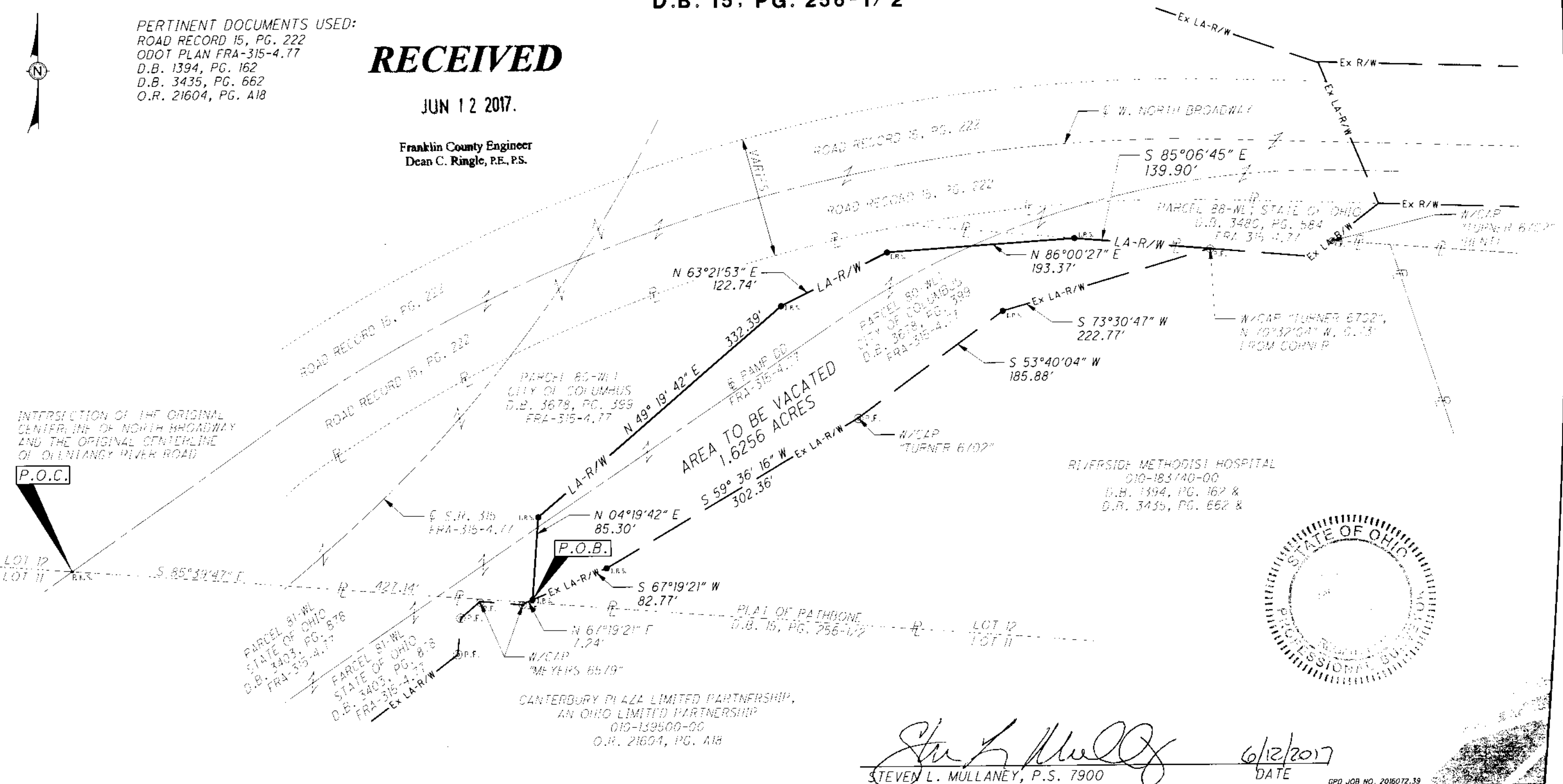
**LEGEND:**  
P.O.B. POINT OF BEGINNING  
P.O.C. POINT OF COMMENCEMENT  
① 1" IRON PIPE (FOUND)  
● 5/8" x 30" REBAR W/CAP STAMPED "GPD"  
• R.S. MAGNAIL SET

**PERTINENT DOCUMENTS USED:**  
ROAD RECORD 15, PG. 222  
ODOT PLAN FRA-315-4.77  
D.B. 1394, PG. 162  
D.B. 3435, PG. 662  
O.R. 21604, PG. A18

**RECEIVED**

JUN 12 2017.

Franklin County Engineer  
Dean C. Ringle, P.E., P.S.



*Steven L. Mullaney*  
STEVEN L. MULLANEY, P.S. 7900  
DATE 6/12/2017