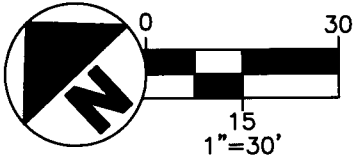


VIRGINIA MILITARY SURVEY NO. 3453  
THE CITY OF HILLIARD  
COUNTY OF FRANKLIN  
STATE OF OHIO



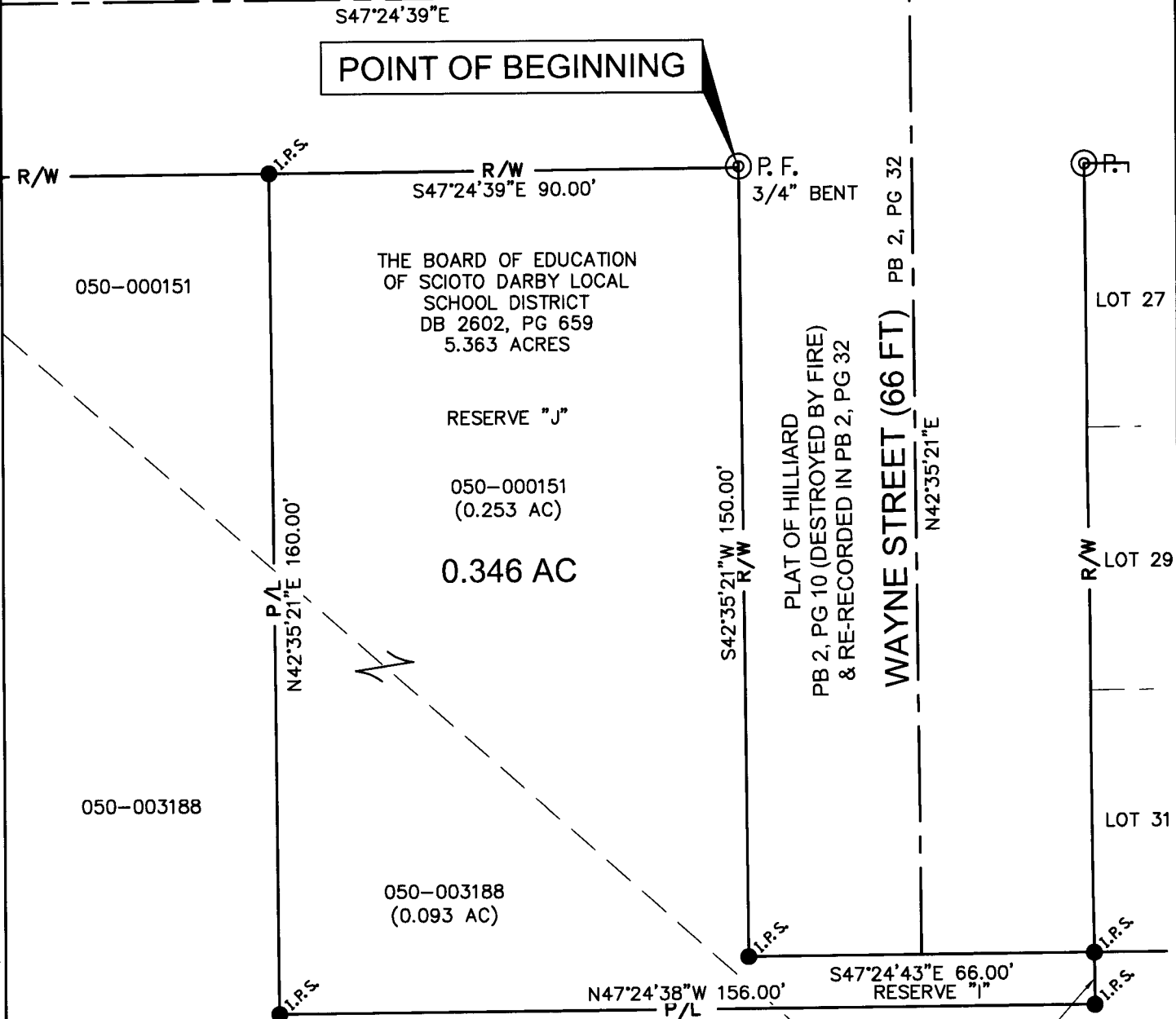
**RECEIVED**

MAY 05 2017

Franklin County Engineer  
Dean C. Ringle, P.E., P.S.

MADISON STREET (66 FT) PB 2, PG 32

POINT OF BEGINNING

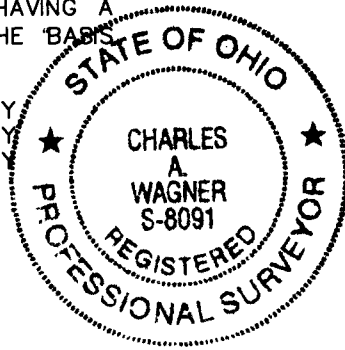


**BASIS OF BEARINGS**

THE BEARINGS SHOWN ON THIS PLAT ARE BASED ON THE OHIO STATE PLANE COORDINATE SYSTEM, SOUTH ZONE, NAD83 (2011). THE WESTERLY R/W OF MADISON STREET, HAVING A BEARING OF SOUTH 47°24'39" EAST IS DESIGNATED THE "BASIS OF BEARING" FOR THIS PLAT.

HEREBY CERTIFY THIS PLAT WAS BASED FIELD SURVEY CONDUCTED BY CW DESIGN GROUP, LLC UNDER MY GUIDANCE IN AUGUST 2016 AND TO THE BEST OF MY KNOWLEDGE DEPICTS THE BOUNDARY LINES.

*Charles A. Wagner*  
CHARLES A. WAGNER, PS-8091 DATE 5-3-2017  
CW DESIGN GROUP, LLC



**LEGEND**

- I.P.S. IRON PIN SET\*
  - ⊙ P.F. IRON PIPE SET
  - P/L — PROPERTY LINE
  - R/W — RIGHT OF WAY
- \*IRON PINS SET ARE 5/8" Ø X 30" LONG IRON PINS WITH A CAP THAT READS "CW DESIGN GROUP"

[cw design group] D:\Project\2016\160023\Drawing\Parcel01.dwg May 02, 2017 5:58pm

CW Design Group  
ENGINEERS | SURVEYORS  
PHONE: 614-846-9279  
972 Linkfield Drive  
Worthington, Ohio 43085

**PARCEL 1  
EXHIBIT B**

16-0023

