

2.060 Ac. Lot Split Exhibit
 Survey Nos. 6641 and 7065
 of the Virginia Military District
 City of Columbus, Franklin County, Ohio

Sycamore House LLC
 I.N. 201702220024899
 11.217 Ac.
 APN: 470-289142

Andover Park II LLC
 I.N. 201411030145788
 9.424 Ac.
 APN: 010-291854

Brynhaven
 Development Corporation
 O.R. 34850G07
 Orig. 14.882 Ac.
 APN 010-243357

Brynhaven
 Development
 Corporation
 I.N. 201408140106216
 0.756 Ac.
 APN: 010-294026

Franklin County Board
 of County Commissioners
 D.B. 3493, Pg. 290
 0.100 Ac.

Hilliard-Rome Road
 FRA-70-3.41
 P.B. 35, Pg. 109

State of Ohio
 D.B. 2905, Pg. 286
 Parcel 106WL: 0.184 Ac.

State of Ohio
 D.B. 2905, Pg. 288
 Parcel 106WD: 1.850 Ac.

NO⁴²°52'W 236.90'

S88°20'35"W 753.91'

S1°39'25"E 358.00'

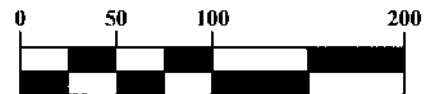
VMS 6641
 VMS 7326

Fisher Road: CR22
 FRA-70-3.41
 P.B. 35, Pg. 109

VMS 7065
 VMS 7326

State of Ohio
 D.B. 2905, Pg. 288
 Parcel 106WD: 1.850 Ac.

GRAPHIC SCALE



1 inch = 100 feet

LINE TABLE		
LINE	BEARING	LENGTH
L1	S01°39'25"E	130.37'
L2	S86°14'38"E	18.70'
L3	S01°39'25"E	152.72'
L4	N86°14'38"W	272.87'
L5	N75°16'30"W	78.86'
L6	N88°20'35"E	324.80'

DRAWN BY: DRB JOB NO.: 17-0004-584
 DATE: 04/13/2017 CHECKED BY: BCK



422 Beecher Road
 Gahanna, Ohio 43230
 ph 614.428.7750
 fax 614.428.7755

ENGINEERS SURVEYORS

RECEIVED

APR 19 2017

Franklin County Engineer
 Dean C. Ringle, P.E.

Matchline "A"

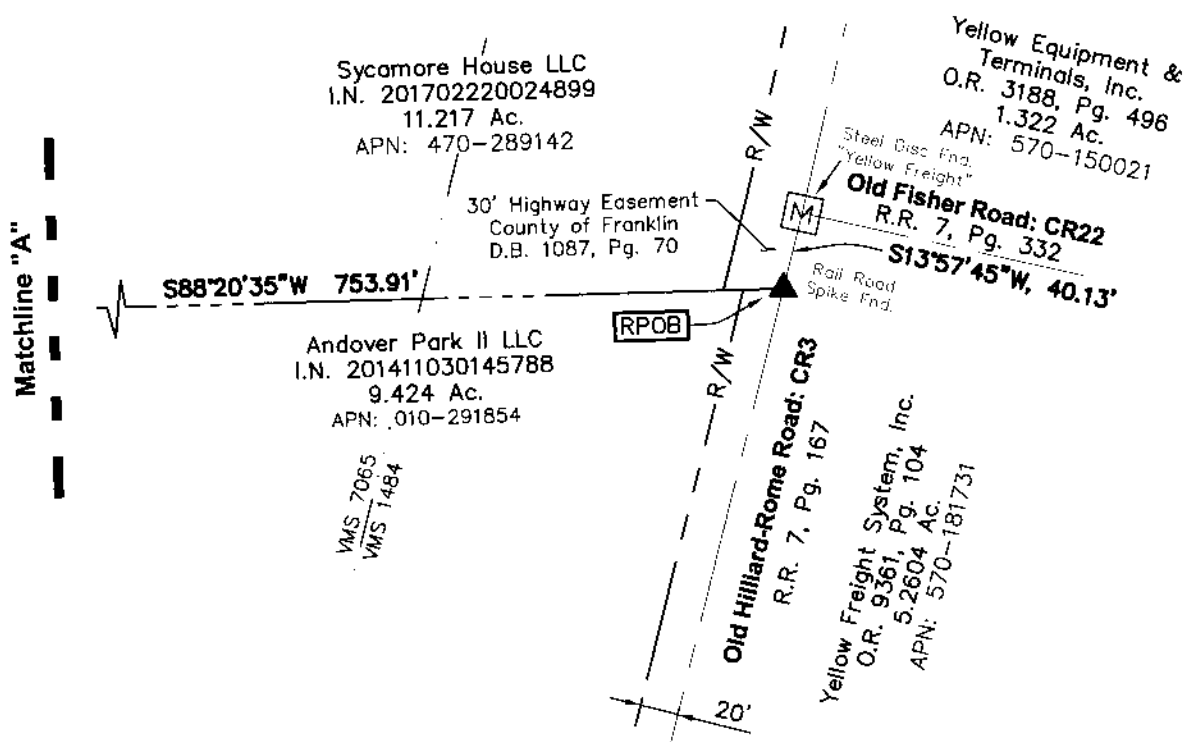


2.060 Ac. Lot Split Exhibit
 Survey Nos. 6641 and 7065
 of the Virginia Military District
 City of Columbus, Franklin County, Ohio

RECEIVED

APR 19 2017

Franklin County Engineer
 Dean C. Ringle, P.E., P.S.



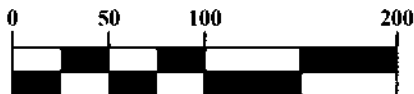
Matchline "A"

LINE TABLE		
LINE	BEARING	LENGTH
L1	S01°39'25"E	130.37'
L2	S86°14'38"E	18.70'
L3	S01°39'25"E	152.72'
L4	N86°14'38"W	272.87'
L5	N75°16'30"W	78.86'
L6	N88°20'35"E	324.80'

Legend

- Iron Pin Found
- ▲ RR Spike Found
- Iron Pin Set

GRAPHIC SCALE

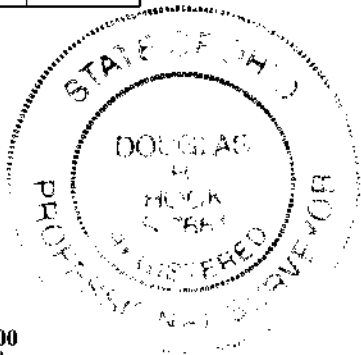


1 inch = 100 feet

ADVANCED CIVIL DESIGN, INC.

Douglas R. Hock
 Douglas R. Hock, P.S. 7661

4/19/17
 Date:



Bearings are based on S 13° 57' 45" W for the centerline of Old Hilliard-Rome Road, said centerline being the east line of the 14.882 acre tract noted in O.R. 34850G07.

This survey is based on existing recorded records and a survey by Advanced Civil Design, Inc. in January of 2017.

DRAWN BY: DRB JOB NO.: 17-0004-584
 DATE: 04/13/2017 CHECKED BY: BCK

422 Beecher Road
 Gahanna, Ohio 43230
 ph 614.428.7750
 fax 614.428.7755

2 / 2

ADVANCED
 CIVIL DESIGN
 ENGINEERS SURVEYORS