

SURVEY OF ACREAGE PARCELS

QUARTER TOWNSHIP 3, TOWNSHIP 2, RANGE 16

UNITED STATES MILITARY LANDS

CITY OF NEW ALBANY, COUNTY OF FRANKLIN, STATE OF OHIO

RECEIVED

FEB 09 2016

Franklin County Engineer
Dean C. Ringo, P.E., P.S.

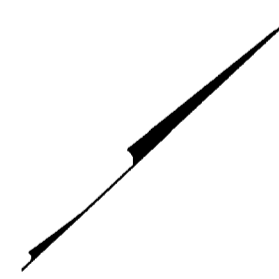
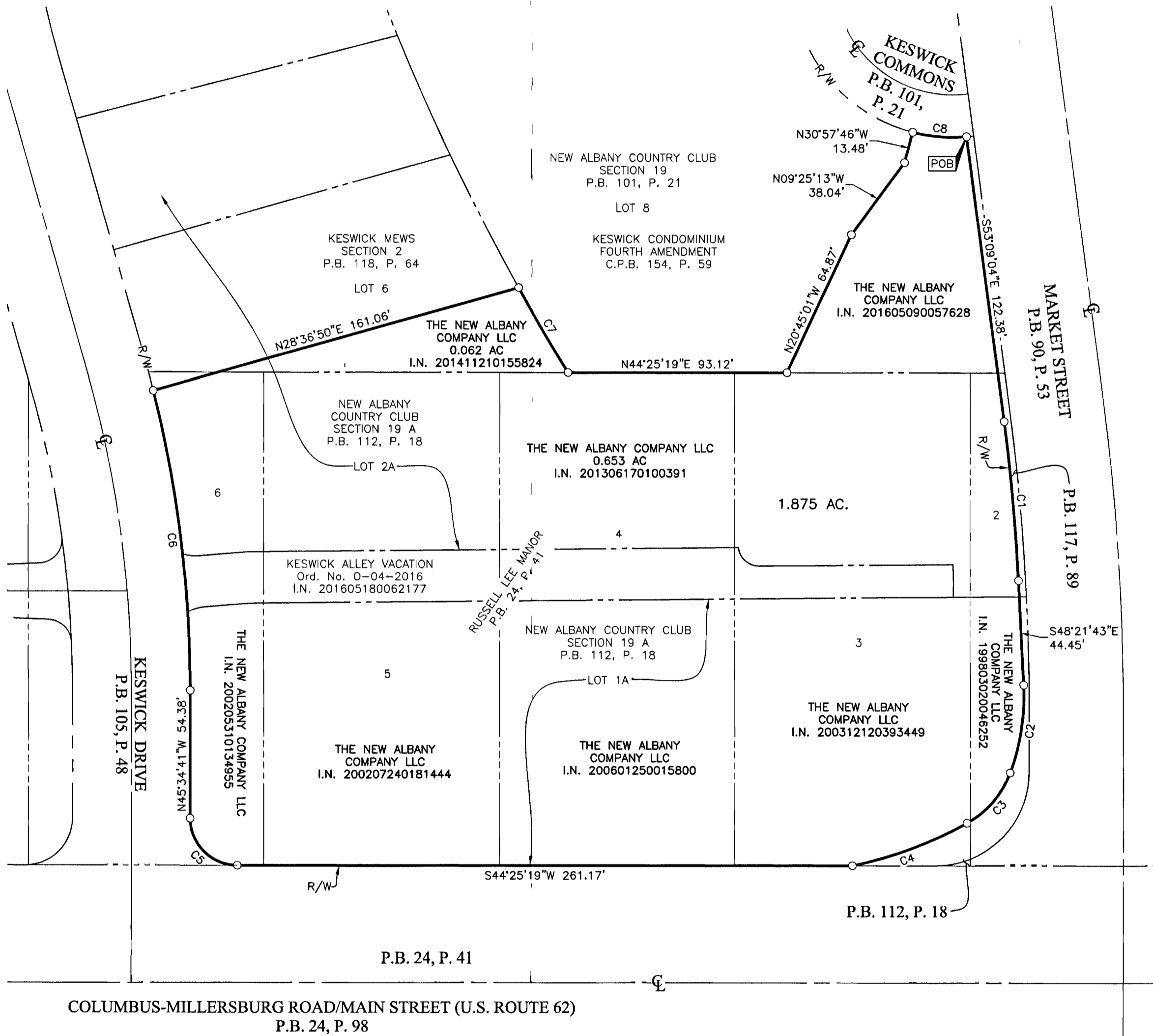
CURVE TABLE					
CURVE	DELTA	RADIUS	ARC	CH. BEARING	CH. DIST.
C1	4°47'21"	817.00'	68.29'	S50°45'23"E	68.27'
C2	23°02'13"	95.00'	38.20'	S36°50'43"E	37.94'
C3	41°09'29"	40.00'	28.73'	S04°44'32"E	28.12'
C4	17°33'38"	170.00'	52.10'	S23°46'25"W	51.90'
C5	90°00'00"	20.00'	31.42'	S89°25'19"W	28.28'
C6	14°05'43"	525.00'	129.16'	N52°37'33"W	128.83'
C7	2°27'37"	975.00'	41.87'	S75°58'05"E	41.87'
C8	19°26'10"	68.00'	23.07'	N49°02'19"E	22.96'

BASIS OF BEARINGS:

The Bearings shown hereon are based on the Ohio State Plane Coordinate System South Zone as per NAD83. Said bearing originated from a field traverse which was tied (referenced) to Franklin County Survey Control Monuments FRANK 78 and FRANK 178. A bearing of North 53° 09' 04" West was held for a portion of Market Street.

SURVEY NOTE:

This survey was prepared using documents of record, prior plats of survey, and observed evidence located by an actual field survey.



- = STONE FND.
- = MON. FND.
- = I.P. FND.
- = I.P. SET
- = MAG. NAIL FND.
- = MAG. NAIL SET
- ▲ = R.R. SPK. FND.
- △ = R.R. SPK. SET
- ◆ = P.K. NAIL FND.

I.P. Set are 13/16" I.D. iron pipes
30" long with cap inscribed EMHT INC.

GRAPHIC SCALE (in feet)

By Heather L. King 2/6/17
Heather L. King Professional Surveyor No. 8307 Date

<p>Evans, Mechwart, Hambleton & Tilton, Inc. Engineers • Surveyors • Planners • Scientists 5500 New Albany Road, Columbus, OH 43054 Phone: 614.775.4500 Toll Free: 888.775.3648 emht.com</p>	Date: January 18, 2017	
	Scale: 1" = 40'	
	Job No: 2017-0057	
	Sheet: 1 of 1	
REVISIONS		
MARK	DATE	DESCRIPTION

\\20170057\DWG\CAD\SET\BOUNDARY\20170057-VS-BNDY-02.DWG plotted by KING, HEATHER on 2/8/2017 14:30:01 PM last saved by KING on 2/8/2017 1:42:35 PM