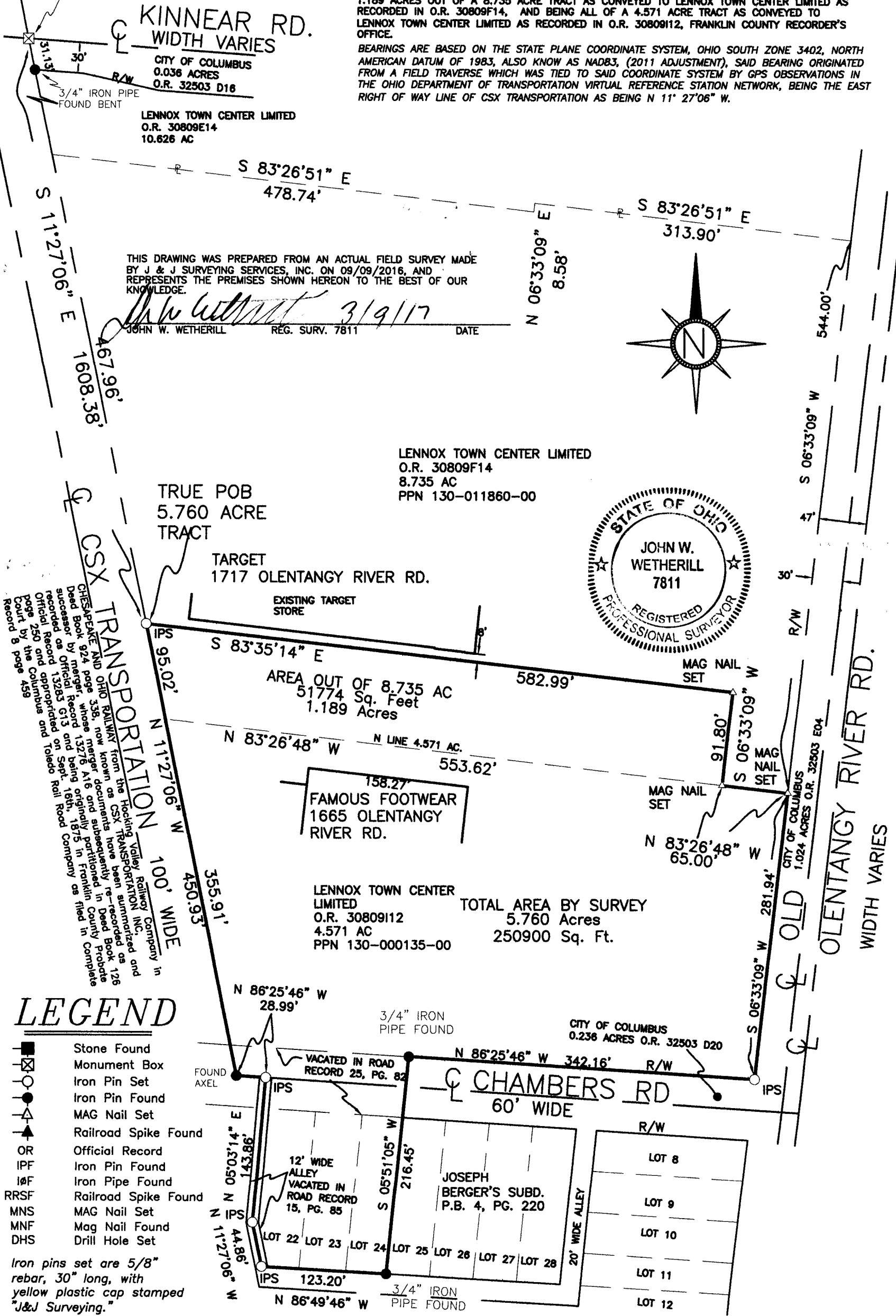


SURVEY OF 5.760 ACRES AT THE LENNOX TOWN CENTER

RPOB 1.189 ACRE TRACT
FRANKLIN COUNTY
ENGINEER'S MONUMENT
#5852

SITUATED IN THE STATE OF OHIO, COUNTY OF FRANKLIN, TOWNSHIP OF CLINTON, IN QUARTER TOWNSHIP 3, TOWNSHIP 1 NORTH, RANGE 18 WEST, UNITED STATES MILITARY LANDS, AND BEING 1.189 ACRES OUT OF A 8.735 ACRE TRACT AS CONVEYED TO LENNOX TOWN CENTER LIMITED AS RECORDED IN O.R. 30809F14, AND BEING ALL OF A 4.571 ACRE TRACT AS CONVEYED TO LENNOX TOWN CENTER LIMITED AS RECORDED IN O.R. 30809I12, FRANKLIN COUNTY RECORDER'S OFFICE.

BEARINGS ARE BASED ON THE STATE PLANE COORDINATE SYSTEM, OHIO SOUTH ZONE 3402, NORTH AMERICAN DATUM OF 1983, ALSO KNOWN AS NAD83, (2011 ADJUSTMENT), SAID BEARING ORIGINATED FROM A FIELD TRAVERSE WHICH WAS TIED TO SAID COORDINATE SYSTEM BY GPS OBSERVATIONS IN THE OHIO DEPARTMENT OF TRANSPORTATION VIRTUAL REFERENCE STATION NETWORK, BEING THE EAST RIGHT OF WAY LINE OF CSX TRANSPORTATION AS BEING N 11° 27' 06" W.



THIS DRAWING WAS PREPARED FROM AN ACTUAL FIELD SURVEY MADE BY J & J SURVEYING SERVICES, INC. ON 09/09/2016, AND REPRESENTS THE PREMISES SHOWN HEREON TO THE BEST OF OUR KNOWLEDGE.

CSX TRANSPORTATION
 100' WIDE
 CHESAPEAKE AND OHIO RAILWAY from the Hocking Valley Railway Company in
 Dead Book 924 page 338, now known as CSX TRANSPORTATION INC.,
 succeeded by merger, whose merger documents have been summarized and
 recorded as Official Record 13276 A16 and subsequently re-recorded as
 Official Record 13285 G13 and being originally partitioned in Franklin County
 Court by the Columbus and Toledo Rail Road Company as filed in Complete
 Record 250 and appropriated on Sept. 18th, 1875 in Franklin County
 Court by the Columbus and Toledo Rail Road Company as filed in Complete
 Record 8 page 459

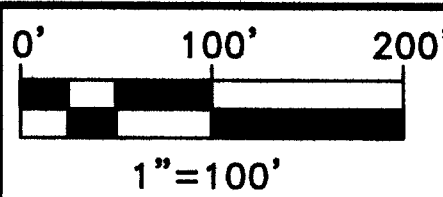
LEGEND

- Stone Found
- ⊗ Monument Box
- Iron Pin Set
- Iron Pin Found
- ▲ MAG Nail Set
- ▲ Railroad Spike Found
- OR Official Record
- IPF Iron Pin Found
- IPF Iron Pipe Found
- RRSF Railroad Spike Found
- MNS MAG Nail Set
- MNF Mag Nail Found
- DHS Drill Hole Set

Iron pins set are 5/8" rebar, 30" long, with yellow plastic cap stamped "J&J Surveying."

J & J SURVEYING SERVICES, INC.
 7509 E. MAIN ST. SUITE 104
 REYNOLDSBURG, OHIO 43068
 PH# (614) 866-9158
 JOHN.WETHERILL@JJSURVEYINGOHIO.COM
 JOHN7811@AMERITECH.NET
 © 2016 J. & J. SURVEYING SERVICES, INC.

DATE	REVISIONS	BY	DATE
09/30/16	ADD 4.751 AC	JWW	10/13/16
JWW			
JWW			
JWW			



JOB NUMBER
 16-077
 SPLIT