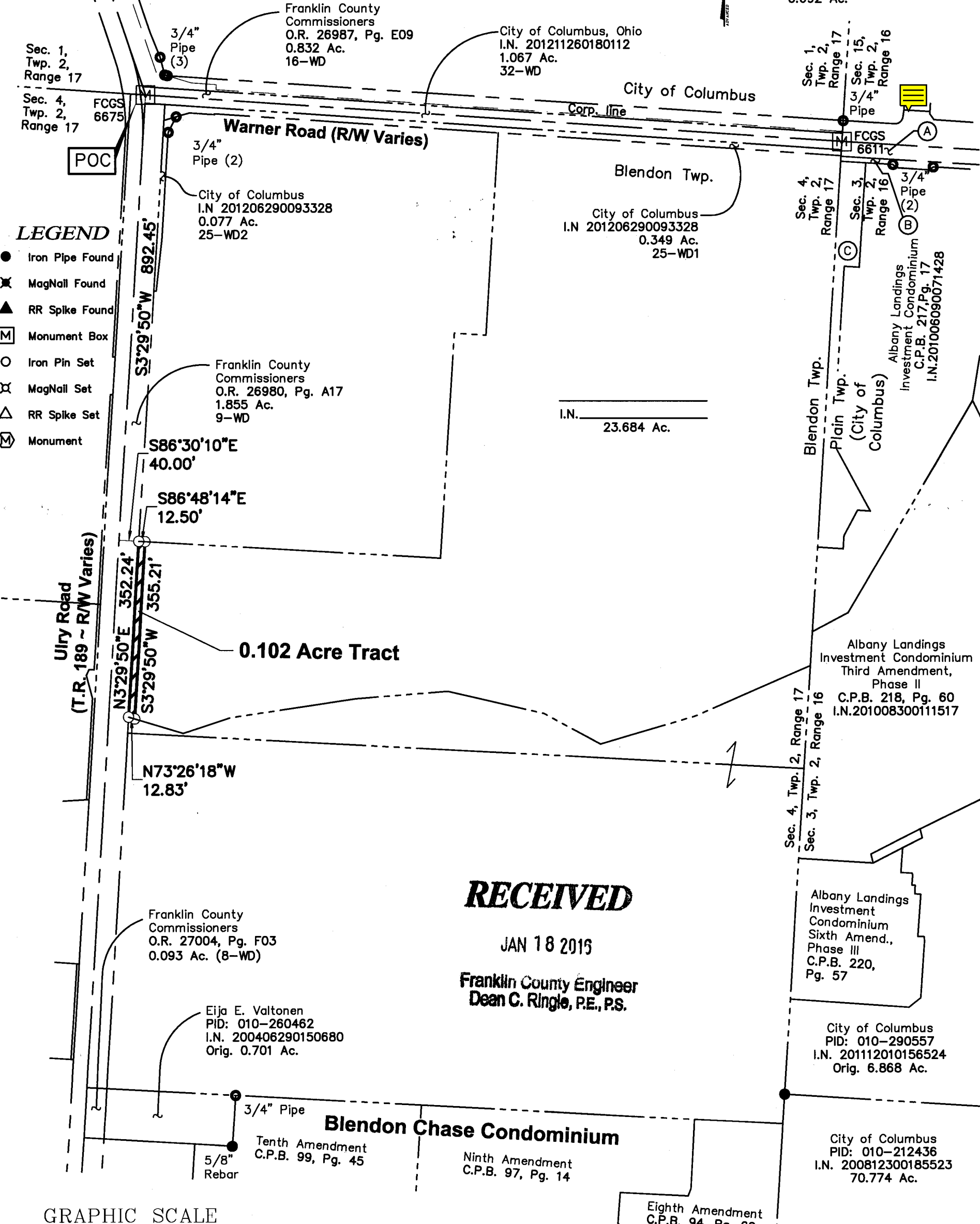


Bearings are based on the Ohio State Plane Coordinate System, South Zone, NAD83(NSRS 2007). Said bearings were derived from GPS observation that determine a portion of the centerline of Warner Road between Franklin County Monument designation 6675 and Franklin County Monument designation 6611 having a bearing of S 86° 15' 59" E.

0.102 Acre Exhibit
 Section 4, Township 2, Range 17
 United States Military District
 Blendon Township, Franklin County, Ohio

- (A) City of Columbus, Ohio
I.N. 200707100120011
0.418 Ac.
- (B) City of Columbus, Ohio
I.N. 201003120029573
0.139 Ac.
- (C) The Woods at
Perry Lane LLC
I.N. 201307020111066
0.692 Ac.



LEGEND

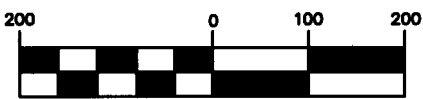
- Iron Pipe Found
- ✕ MagNail Found
- ▲ RR Spike Found
- [M] Monument Box
- Iron Pin Set
- ✕ MagNail Set
- △ RR Spike Set
- [M] Monument

RECEIVED

JAN 18 2015

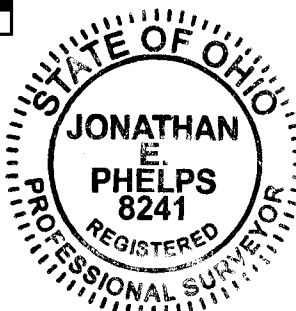
Franklin County Engineer
 Dean C. Ringle, P.E., P.S.

GRAPHIC SCALE



(IN FEET)
 1 inch = 200 ft.

All iron pins set are 3/4" diameter, 30" long iron pipe with plastic cap inscribed "Advanced 7661".



This Survey is based on existing records from Franklin County, and from actual field survey work in September, 2014 and September, 2016.

Jonathan E. Phelps
 Reg. No. 8241
 Date 1/17/17

DRAWN BY: JEP JOB NO.: 16-0126-128
 DATE: 01/13/2017 CHECKED BY: JEP

ADVANCED CIVIL DESIGN ENGINEERS SURVEYORS
 422 Beecher Road
 Gahanna, Ohio 43230
 ph 614.428.7750
 fax 614.428.7755