



Evans, Mechwart, Hambleton & Tilton, Inc. Engineers • Surveyors • Planners • Scientists 5500 New Albany Road, Columbus, OH 43054 Phone: 614.775.4500 Toll Free: 888.775.3648 emht.com

SURVEY OF ACREAGE PARCEL

SURVEY NUMBER 1388
VIRGINIA MILITARY DISTRICT
CITY OF GROVE CITY, COUNTY OF FRANKLIN, STATE OF OHIO

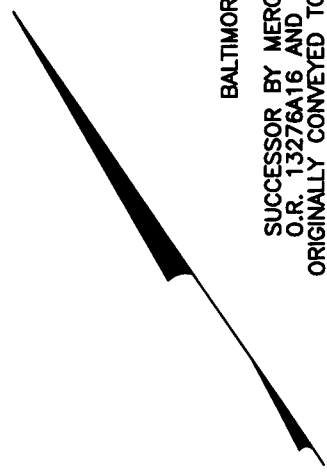
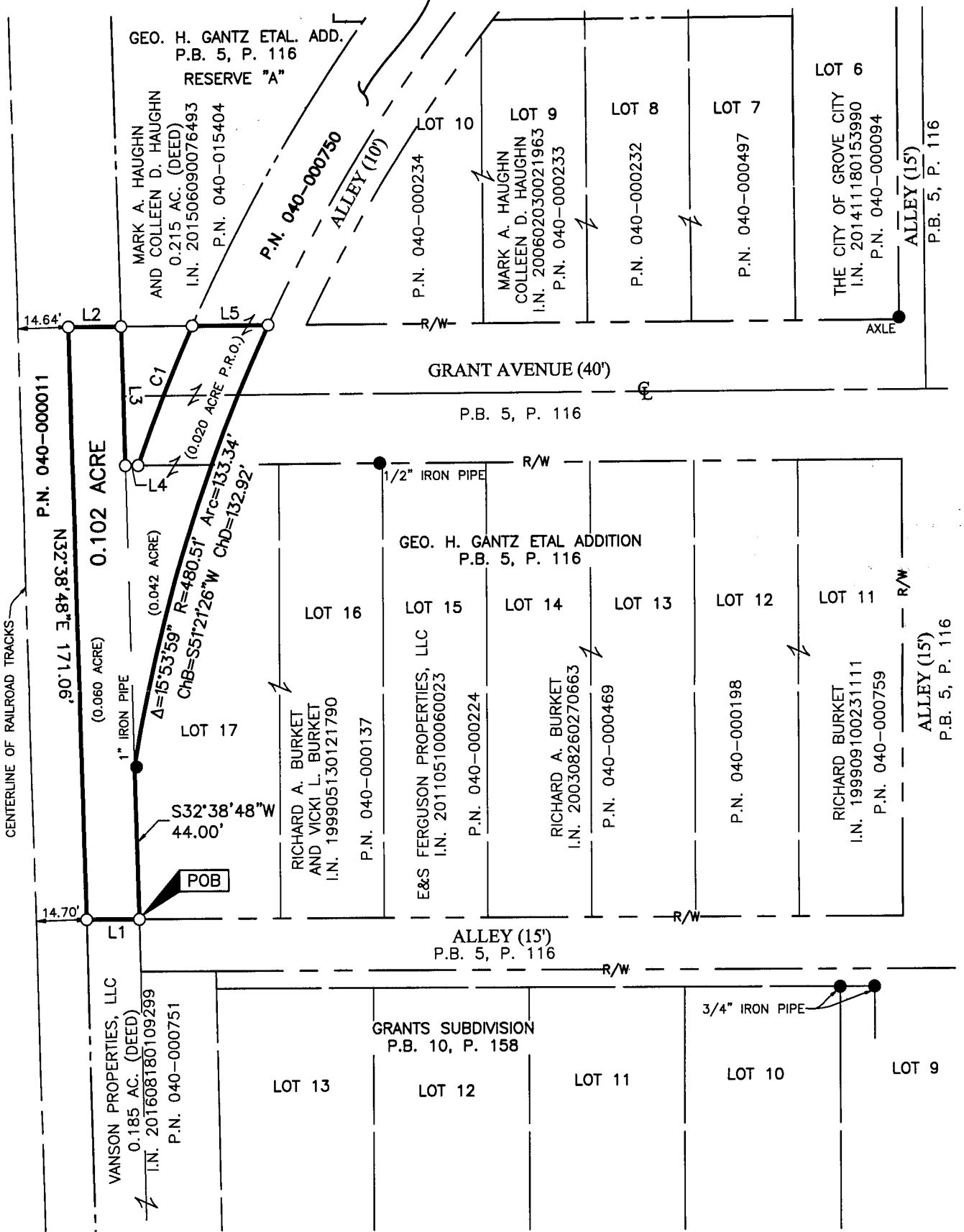
Date: January 18, 2017 Job No: 2016-0121 Scale: 1" = 40'

CURVE TABLE					
CURVE	DELTA	RADIUS	ARC	CH. BEARING	CH. DIST.
C1	4°55'30"	500.51'	43.02'	N55°46'39"E	43.01'

LINE TABLE		
LINE	BEARING	DISTANCE
L1	N55°46'41"W	15.29'
L2	S55°46'41"E	15.29'
L3	S32°38'48"W	40.02'
L4	S55°46'41"E	3.77'
L5	S55°46'41"E	21.99'

BALTIMORE AND OHIO RAILWAY BY D.B. 592, P. 1, NKA CSX TRANSPORTATION INC., SUCCESSOR BY MERGER, WHOSE MERGER DOCUMENTS WERE RECORDED IN O.R. 13276A16 AND O.R. 13276B15, AND RE-RECORDED IN O.R. 13283G13 ORIGINALLY CONVEYED TO THE COLUMBUS AND CINCINNATI MIDLAND RAILROAD CO. D.B. 184, P. 540

BALTIMORE AND OHIO RAILWAY BY D.B. 592, P. 1, NKA CSX TRANSPORTATION INC., SUCCESSOR BY MERGER, WHOSE MERGER DOCUMENTS WERE RECORDED IN O.R. 13276A16 AND O.R. 13276B15, AND RE-RECORDED IN O.R. 13283G13 ORIGINALLY CONVEYED TO THE COLUMBUS AND CINCINNATI MIDLAND RAILROAD CO. D.B. 325, P. 54



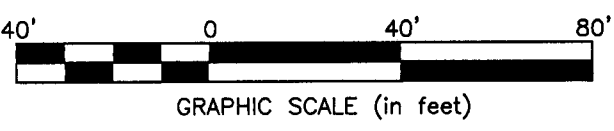
RECEIVED

JAN 23 2016

Franklin County Engineer
Dean C. Ringle, P.E., P.S.

- = STONE FND.
- = MON. FND.
- = I.P. FND.
- = I.P. SET
- = MAG. NAIL FND.
- = MAG. NAIL SET
- ▲ = R.R. SPK. FND.
- △ = R.R. SPK. SET
- = P.K. NAIL FND.

I.P. Set are 13/16" I.D. iron pipes 30" long with cap inscribed EMHT INC.

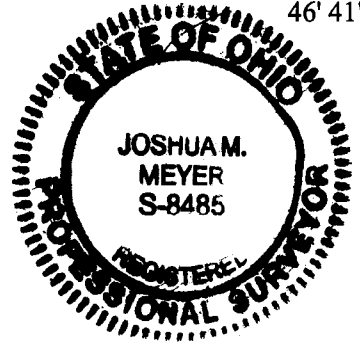


SURVEY NOTE:

This survey was prepared using documents of record, prior plats of survey, and observed evidence located by an actual field survey in May 2002, June 2010, October 2013, September 2014, and December 2016.

BASIS OF BEARINGS:

The bearings shown on this survey are based on the Ohio State Plane Coordinate System, South Zone, NAD83 (CORS96). Said bearings originated from a field traverse which was tied (referenced) to said coordinate system by GPS observations and observations of selected CORS base stations in the National Spatial Reference System. The portion of the southerly right-of-way line of Grant Avenue, having a bearing of South 55° 46' 41" East, is designated the "basis of bearing" for this survey.



By *J.M.M.*
Joshua M. Meyer
Professional Surveyor No. 8485

1-20-2017
Date