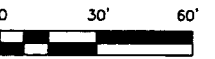


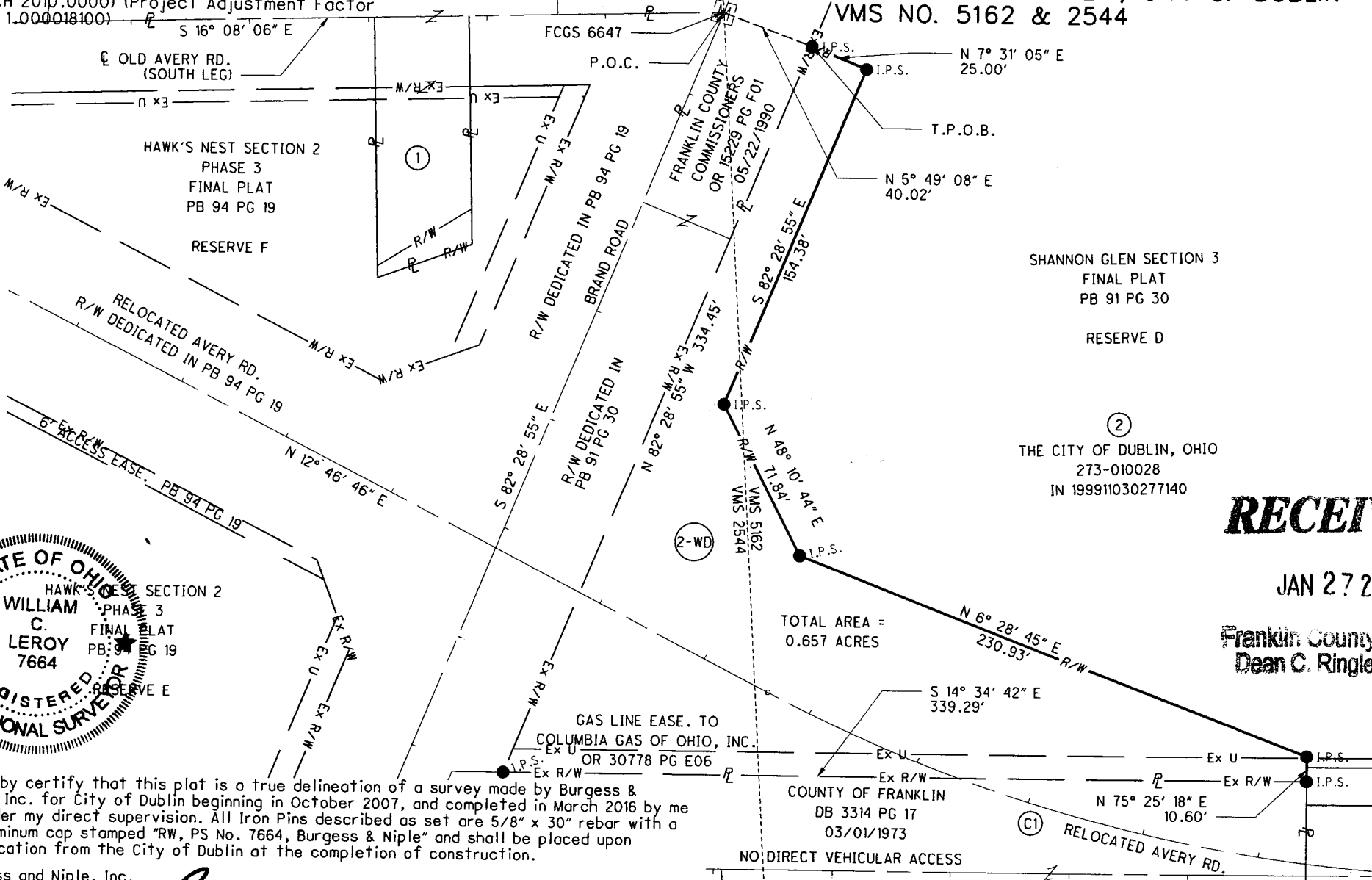
The basis of bearing shown on this plat are based on Grid North, as obtained by RTK/GPS observations taken from Franklin County Engineer Monuments: Station FCGS 6647 and FCGS 6648, with a bearing of South 82 degrees 28 minutes 55 seconds East, tied to Ohio State Plane South Datum NAD83(2011) (EPOCH 2010.0000) (Project Adjustment Factor (1/X): 1.000018100)

**PARCEL 2WD**  
**RIGHT-OF-WAY DEDICATION**  
**STATE OF OHIO, COUNTY OF FRANKLIN, CITY OF DUBLIN**  
**VMS NO. 5162 & 2544**

EXHIBIT B



Scale: 1 = 60



① P.I. Sta. 22+94.27  
 $\Delta = 27^\circ 21' 27''$  (LT)  
 $D_c = 8^\circ 30' 03''$   
 $R = 674.00'$   
 $T = 164.04'$   
 $L = 321.82'$   
 $E = 19.67'$   
 $C = 318.77'$   
 $C.B. = N 0^\circ 53' 58'' W$

SHANNON GLEN SECTION 3  
 FINAL PLAT  
 PB 91 PG 30  
 RESERVE D

②  
 THE CITY OF DUBLIN, OHIO  
 273-010028  
 IN 199911030277140

**RECEIVED**

JAN 27 2017

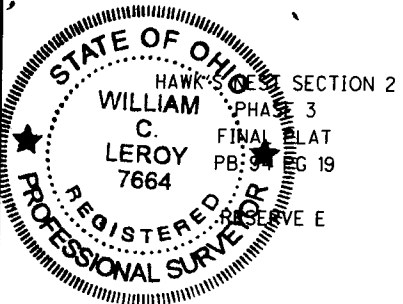
Franklin County Engineer  
 Dean C. Ringle, P.E., P.S.

①  
 INDIAN RUN UNITED  
 METHODIST CHURCH OF  
 DUBLIN, INC.  
 273-010855  
 I.N. 200201100010663

**LEGEND**

- P.O.C. Point Of Commencement
- T.P.O.B. True Point Of Beginning
- P.R.O. Prior Roadway Occupied
- I.P.F. Iron Pin Found
- ⊙ P.F. Pipe Found
- M.N.F. Mag-Nail Found
- M.N.S. Mag-Nail Set
- I.P.S. Iron Pin Set

Dwg: ENW	Chk: WCL	
Scale: SHOWN	Sht: 1 / 1	54786



I hereby certify that this plat is a true delineation of a survey made by Burgess & Niple, Inc. for City of Dublin beginning in October 2007, and completed in March 2016 by me or under my direct supervision. All Iron Pins described as set are 5/8" x 30" rebar with a 2" aluminum cap stamped "RW, PS No. 7664, Burgess & Niple" and shall be placed upon notification from the City of Dublin at the completion of construction.

Burgess and Niple, Inc.  
*William C. Leroy*  
 William C. Leroy, Registered Professional Surveyor No. 7664

Jan. 20, 2017  
 Date

TOTAL AREA =  
 0.657 ACRES