

RECEIVED

3-2-2

JAN 17 REC'D

Franklin County Engineer
Dean C. Ringle, P.E., P.S.

EXHIBIT OF
0.029 ACRES &
0.072 ACRES

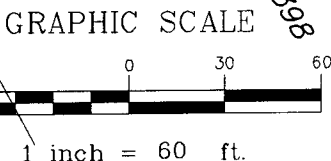
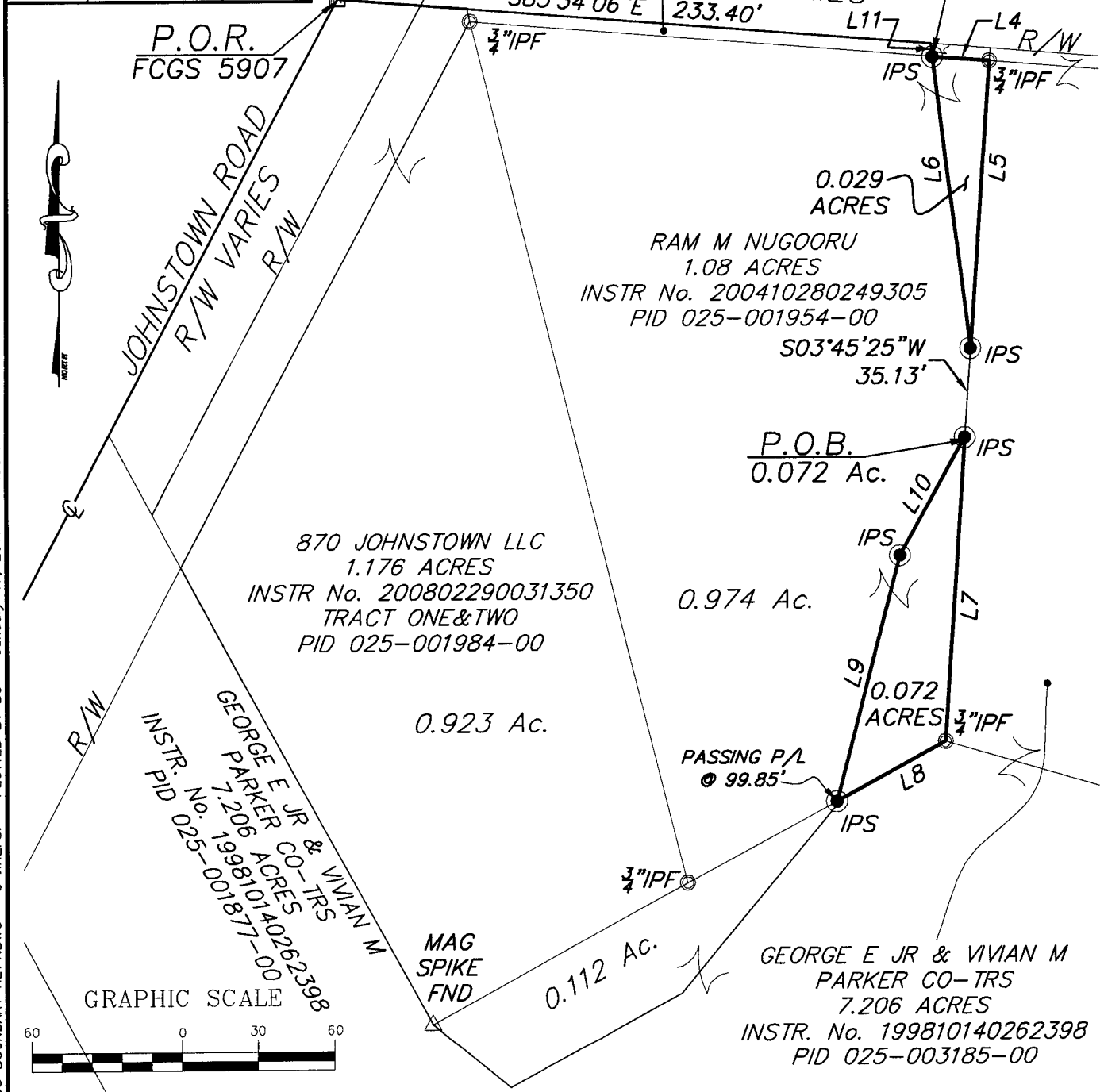
Situate in the State of Ohio, County of Franklin
County, City of Gahanna, Quarter Township 2,
Township 1, Range 16, United States Military Lands

GEORGE E JR &
VIVIAN M PARKER

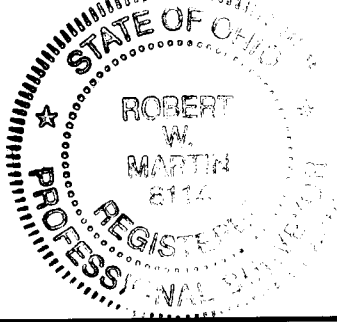
0.024 ACRES
D.B. 3497, PG. 725
PID 025-004244-00

Franklin County Commissioners
1.37 ACRES
D.B. 856, PG. 124

Line Table		
Line #	Direction	Length
L4	S85°34'06"E	22.51'
L5	S3°45'25"W	113.06'
L6	N7°28'30"W	115.53'
L7	S3°45'25"W	120.07'
L8	S61°20'17"W	48.57'
L9	N14°24'15"E	99.84'
L10	N28°55'47"E	53.02'
L11	S7°28'30"E	5.11'
L17	N28°01'30"E	27.36'



For the purpose of this exhibit a bearing of S 85°34'06"E was held on the north line of a 1.08 acre parcel of land conveyed to Ram M Nagooru in Instrument Number 200410280249305, and is based on the Ohio State Plane Coordinate System, South Zone, NAD83 (2011 adjustment). Said bearing was established by Static and RTK GPS Observations, and was determined by using National Geodetic Survey, OPUS-S service. All references to records being on file in the Office of the Recorder, Franklin County, Ohio. This document is based on a survey completed by or under the supervision of Robert W. Martin in May of the year 2016. All Iron Pin Sets (IPS) are to be a 3/4"(I.D.)x30" galvanized iron pipe with a cap inscribed PS 8114.



Prepared By:
TAT WATCON
CONSULTING ENGINEERS & SURVEYORS
83 Shull Avenue
Gahanna, Ohio 43230
Ph. (614) 414-7979

Robert W. Martin 1-17-17
Robert W. Martin, P.S. 8114 Date

DATE: 1/17/2017
SHEET NO. 1 OF 1

DRAWN BY: RWM SCALE: 1" = 60'
CHECKED BY: JGL PROJECT:

Z:\MADY CLOTTS CONDOS\DRAWINGS\SURVEY\CLOTTS CONDO BOUNDARY REV1.DWG - 0 XREFS: - PLOTTED BY BO - January 17, 2017 - 11:56 AM