



Evans, Mechwart, Hambleton & Tilton, Inc.
 Engineers • Surveyors • Planners • Scientists
 5500 New Albany Road, Columbus, OH 43054
 Phone: 614.775.4500 Toll Free: 888.775.3648

emht.com

SURVEY OF ACREAGE PARCEL

SECTION 15, QUARTER TOWNSHIP 2, TOWNSHIP 2, RANGE 16

UNITED STATES MILITARY LANDS

CITY OF COLUMBUS, COUNTY OF FRANKLIN, STATE OF OHIO

Date: January 20, 2017

Scale: 1" = 80'

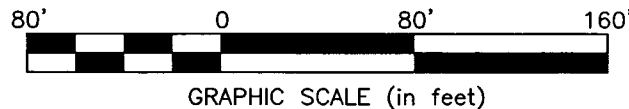
Job No: 2008-0644

CURVE TABLE

CURVE	DELTA	RADIUS	ARC	CH. BEARING	CH. DIST.
C1	90°00'00"	20.00'	31.42'	S41°29'28"E	28.28'
C2	24°46'28"	149.00'	64.43'	S15°53'46"W	63.93'

LINE TABLE

LINE	BEARING	DISTANCE
L1	S03°30'32"W	47.91'
L2	S00°02'04"W	66.00'
L3	S28°17'00"W	26.00'



SURVEY NOTE:

This survey was prepared using documents of record, prior plats of survey and observed evidence located by an actual field survey performed in December of 2016.

BASIS OF BEARINGS:

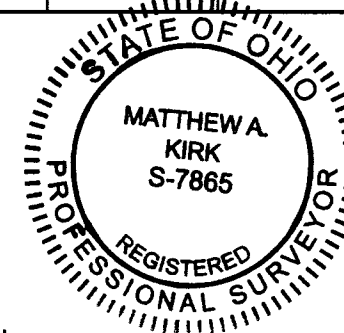
The bearings shown hereon are based on the bearings shown on the plat entitled "Village at Albany Crossing Section 6", of record in Plat Book 110, Page 97, Recorder's Office, Franklin County, Ohio.

- = MON. FND.
- = I.P. FND.
- = I.P. SET
- ◆ = MAG. NAIL FND.
- = MAG. NAIL SET

I.P. Set are 13/16" I.D. iron pipes
 30" long with cap inscribed EMHT INC.

By Matthew A Kirk
 Matthew A. Kirk
 Professional Surveyor No. 7865

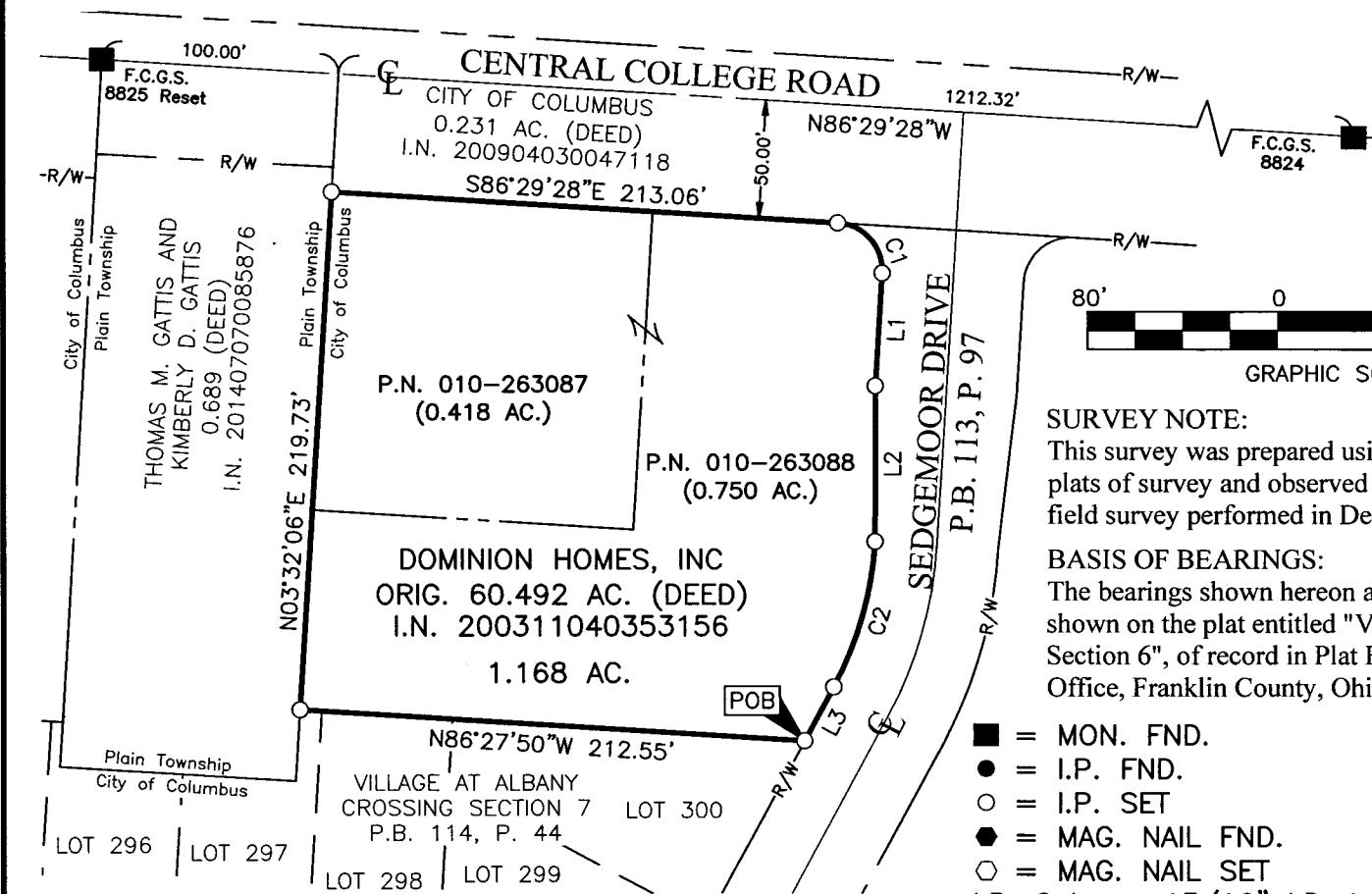
20 JAN 17
 Date



RECEIVED

JAN 23 2016

Franklin County Engineer
 Dean C. Ringle, P.E., P.S.



J:\20080644\DWG\2017\BOUNDARY\20080644-VS-BNDY-01_2017.DWG plotted by MAGERS, MARCUS on 1/20/2017 7:48:16 AM last saved by MMAGERS on 1/19/2017 10:19:42 AM
 Xrefs: