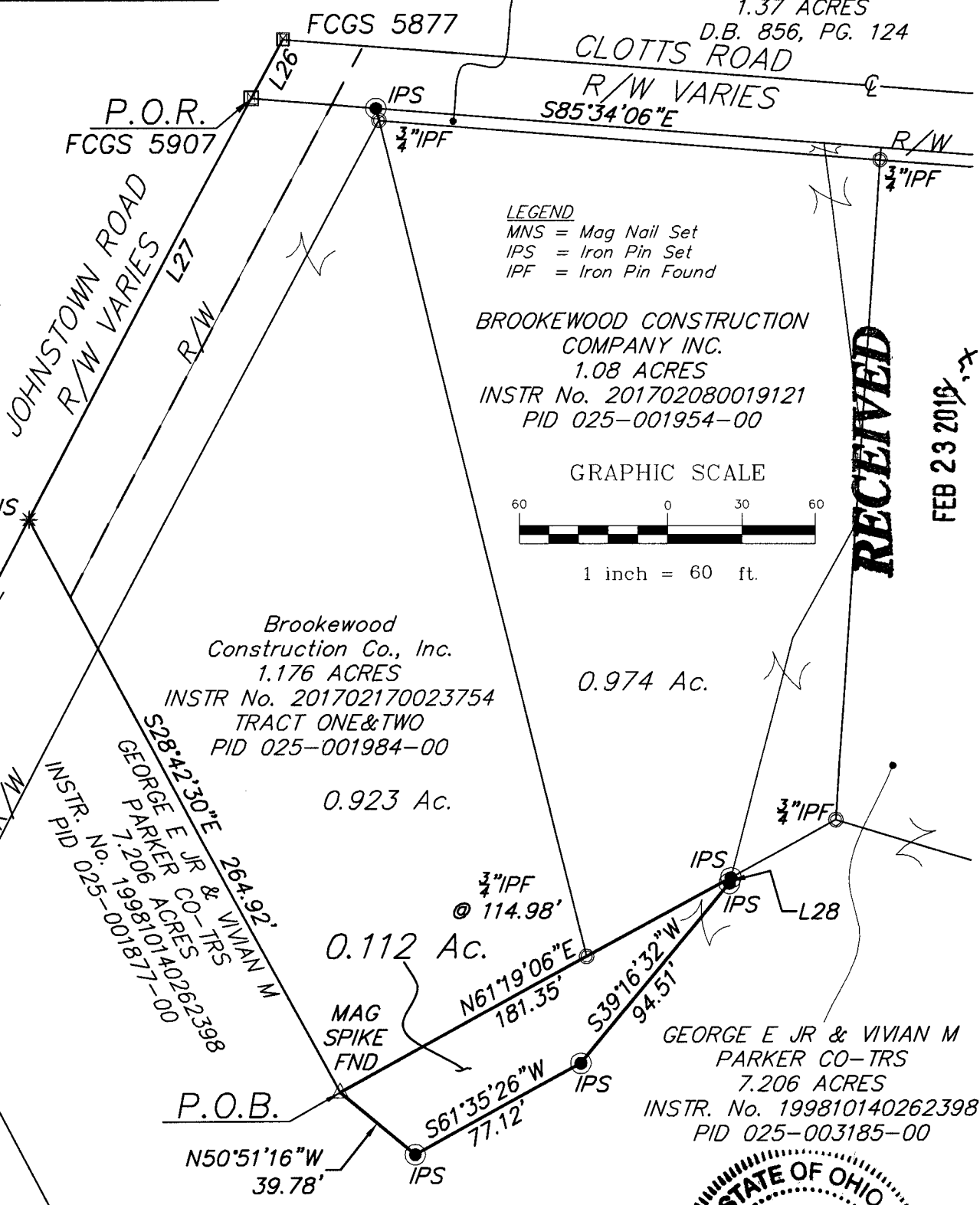


Line Table		
Line #	Direction	Length
L26	N28°01'30"E	27.36'
L27	S28°01'30"W	193.13'
L28	S14°24'15"W	2.37'

Situate in the State of Ohio, County of Franklin  
County, City of Gahanna, Quarter Township 2,  
Township 1, Range 16, United States Military Lands

Brookewood  
Construction Co., Inc.  
0.024 Acres  
INSTR No. 201702170023755  
PID 025-004244-00

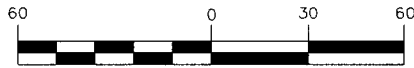
Franklin County Commissioners  
1.37 ACRES  
D.B. 856, PG. 124



LEGEND  
MNS = Mag Nail Set  
IPS = Iron Pin Set  
IPF = Iron Pin Found

BROOKWOOD CONSTRUCTION  
COMPANY INC.  
1.08 ACRES  
INSTR No. 201702080019121  
PID 025-001954-00

GRAPHIC SCALE



1 inch = 60 ft.

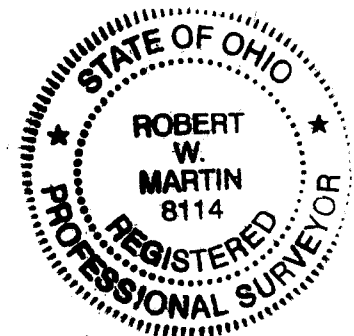
**RECEIVED**

FEB 23 2017

Franklin County Engineer  
Dean C. Ringle, P.E., P.S.

Z:\MADY CLOTTS CONDOS\DRAWINGS\SURVEY\CLOTTS CONDO BOUNDARY REV3.DWG - O XREFS - PLOTTED BY BO - February 21, 2017 - 9:33 AM

For the purpose of this exhibit a bearing of S 85°34'06"E was held on the north line of a 1.08 acre parcel of land conveyed to BROOKWOOD CONSTRUCTION COMPANY INC. of record in Instrument Number 201702080019121, and is based on the Ohio State Plane Coordinate System, South Zone, NAD83 (2011 adjustment). Said bearing was established by Static and RTK GPS Observations, and was determined by using National Geodetic Survey, OPUS-S service. All references to records being on file in the Office of the Recorder, Franklin County, Ohio. This document is based on a survey completed by or under the supervision of Robert W. Martin in May of the year 2016. All Iron Pin Sets (IPS) are to be a 3/4"(I.D.)x30" galvanized iron pipe with a cap inscribed PS 8114.



*Robert W. Martin* 2-21-17  
Robert W. Martin, P.S. 8114

**EXHIBIT OF  
0.112 ACRES  
out of 7.206 Acres**

Prepared By:  
**TAT  
WATCON**  
CONSULTING ENGINEERS & SURVEYORS  
83 Shull Avenue  
Gahanna, Ohio 43230  
Ph. (614) 414-7979

DRAWN BY: RWM	SCALE: 1" = 60'	DATE: 2/21/2017
CHECKED BY: JGL	PROJECT:	SHEET NO. 1 OF 1