

RECEIVED

DEC 27 2016

Franklin County Engineer
Dean C. Ringle PE, PS

L-4-A
K-7-D



Evans, Mechwart, Hambleton & Tilton, Inc.
Engineers • Surveyors • Planners • Scientists
5500 New Albany Road, Columbus, OH 43054
Phone: 614.775.4500 Toll Free: 888.775.3648
emht.com

LOT SPLIT SURVEY

SECTION 13, TOWNSHIP 4, RANGE 22

CONGRESS LANDS

VILLAGE OF OBETZ, COUNTY OF FRANKLIN, STATE OF OHIO

Date: December 20, 2016

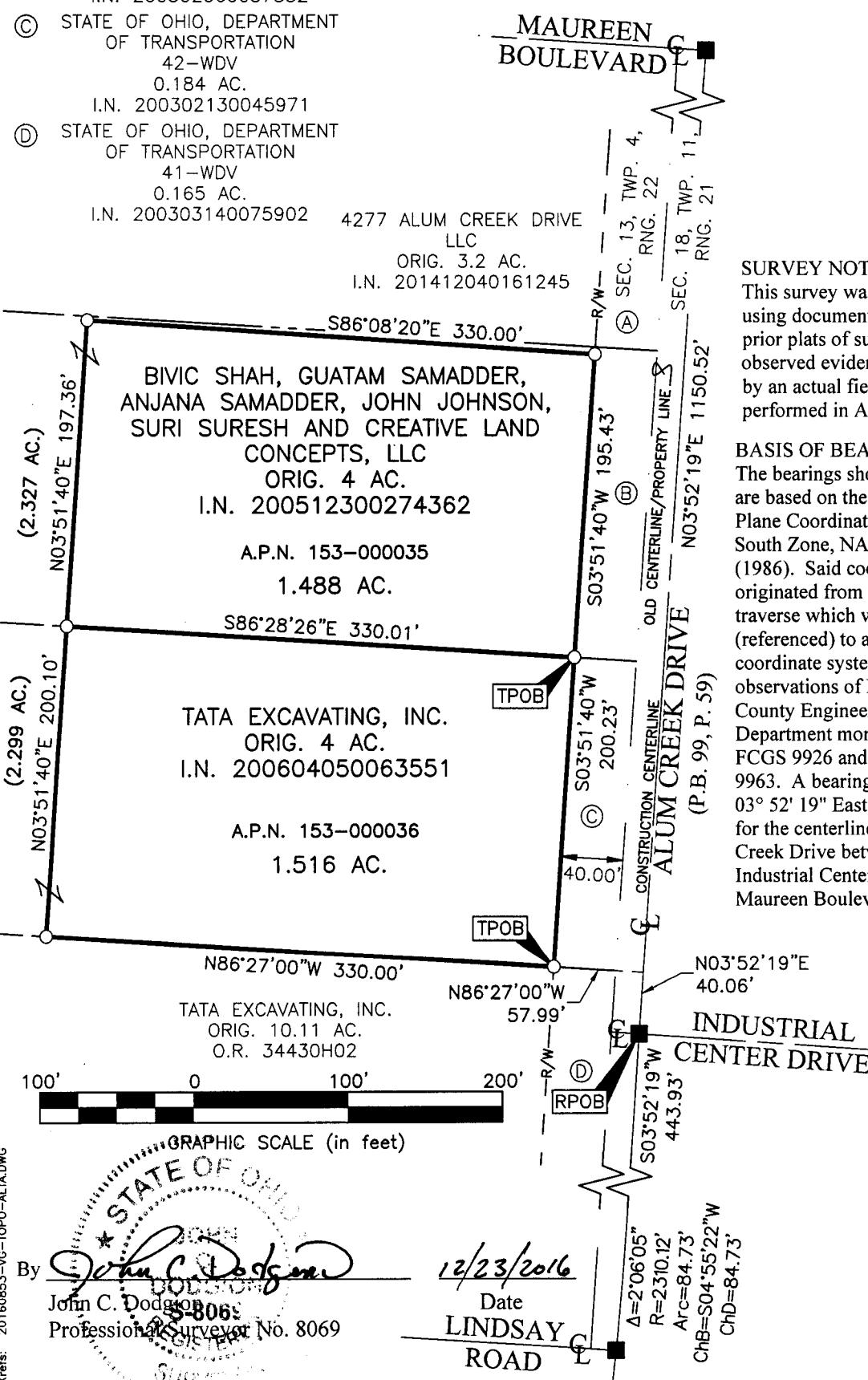
Job No: 2016-0853

Scale: 1" = 100'

- (A) STATE OF OHIO, DEPARTMENT OF TRANSPORTATION
44-WDV
0.147 AC.
I.N. 200304170112994
- (B) STATE OF OHIO, DEPARTMENT OF TRANSPORTATION
43-WDV
0.184 AC.
I.N. 200302060037332
- (C) STATE OF OHIO, DEPARTMENT OF TRANSPORTATION
42-WDV
0.184 AC.
I.N. 200302130045971
- (D) STATE OF OHIO, DEPARTMENT OF TRANSPORTATION
41-WDV
0.165 AC.
I.N. 200303140075902

- = MON. FND. W/ 3/4" SOLID IP
 - = 3/4" I.P. FND. CAPPED "ZANDE" UNLESS OTHERWISE STATED
 - = I.P. SET
 - = MAG. NAIL FND.
 - = MAG. NAIL SET
- I.P. Set are 13/16" I.D. iron pipes 30" long with cap inscribed EMHT INC.

J:\20160853\DWG\04SHEETS\BOUNDARY\20160853-VS-BNDY-01.DWG plotted by DODGION, JOHN on 12/23/2016 1:47:08 PM last saved by DODGION, JOHN on 12/23/2016 1:46:27 PM Xrefs: 20160853-VG-TOPO-ALTA.DWG



SURVEY NOTE:
This survey was prepared using documents of record, prior plats of survey, and observed evidence located by an actual field survey performed in August, 2016.

BASIS OF BEARINGS:
The bearings shown hereon are based on the Ohio State Plane Coordinate System, South Zone, NAD83 (1986). Said coordinates originated from a field traverse which was tied (referenced) to aid coordinate system by GPS observations of Franklin County Engineering Department monuments FCGS 9926 and FCGS 9963. A bearing of North 03° 52' 19" East was held for the centerline of Alum Creek Drive between Industrial Center Drive and Maureen Boulevard.

By John C. Dodgion 12/23/2016
Date
LINDSAY ROAD

Professional Surveyor No. 8069