

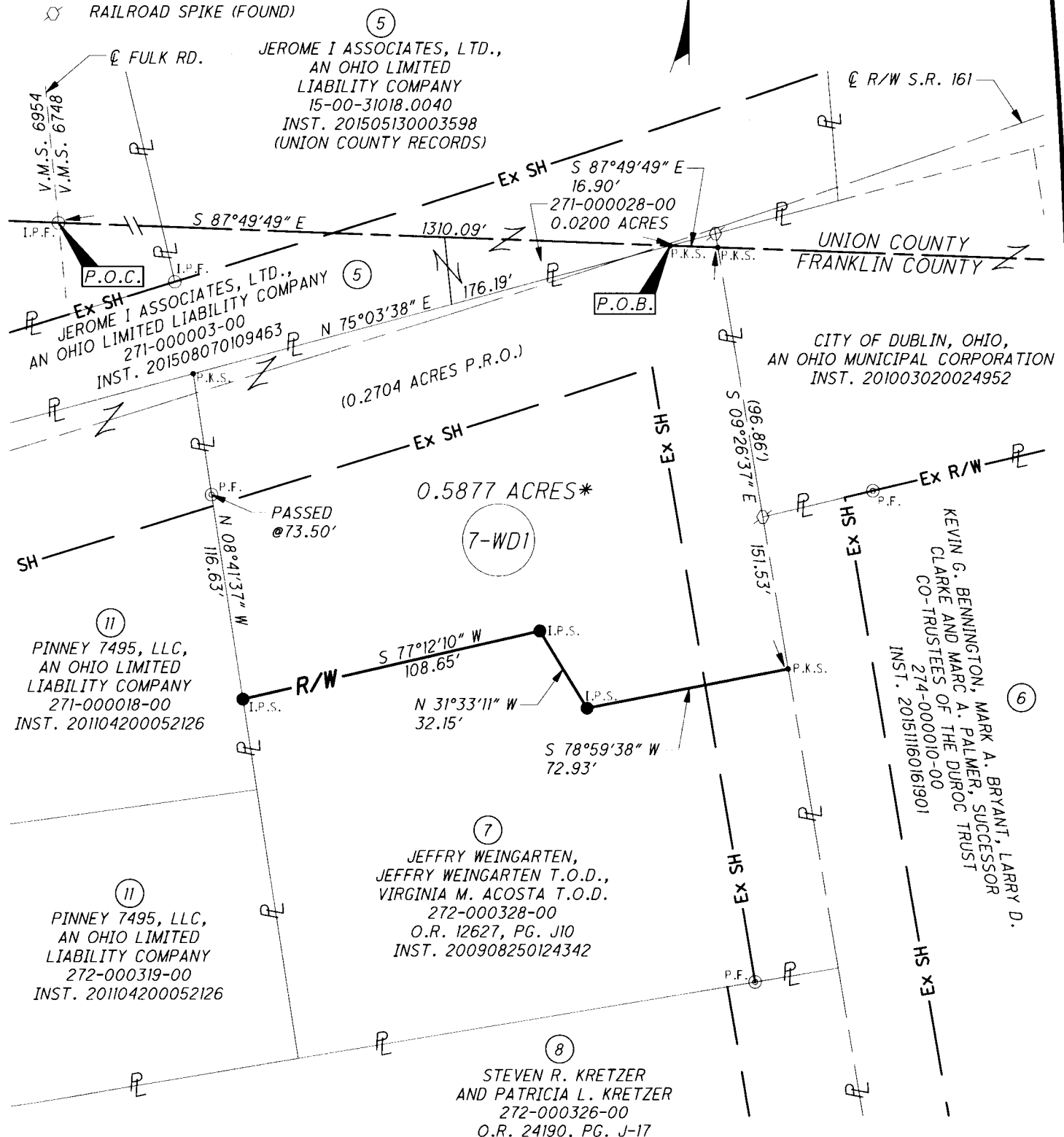
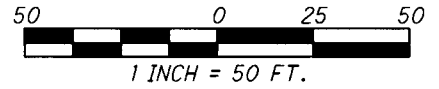


**EXHIBIT B**  
**PARCEL 7-WD1**  
**SR 161/COSGRAY RD. ROUNDABOUT**

**LEGEND:**

- P.O.B. POINT OF BEGINNING
- P.O.C. POINT OF COMMENCEMENT
- I.P.F. 5/8" REBAR (FOUND)
- ⊙ P.F. 3/4" PIPE (FOUND)
- I.P.S. 5/8" x 30" REBAR (SET) W/CAP STAMPED "GPD"
- P.K.S. P.K. NAIL (SET)
- ⊗ RAILROAD SPIKE (FOUND)

STATE OF OHIO  
FRANKLIN COUNTY  
WASHINGTON TOWNSHIP  
V.M.S. 6748



⑪ PINNEY 7495, LLC,  
AN OHIO LIMITED  
LIABILITY COMPANY  
271-000018-00  
INST. 201104200052126

⑪ PINNEY 7495, LLC,  
AN OHIO LIMITED  
LIABILITY COMPANY  
272-000319-00  
INST. 201104200052126

⑦ JEFFRY WEINGARTEN,  
JEFFRY WEINGARTEN T.O.D.,  
VIRGINIA M. ACOSTA T.O.D.  
272-000328-00  
O.R. 12627, PG. J10  
INST. 200908250124342

⑧ STEVEN R. KRETZER  
AND PATRICIA L. KRETZER  
272-000326-00  
O.R. 24190, PG. J-17

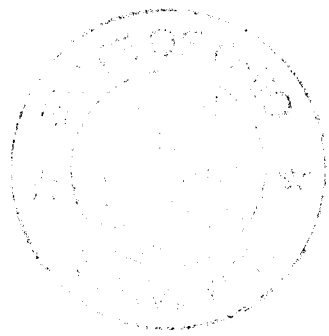
CITY OF DUBLIN, OHIO,  
AN OHIO MUNICIPAL CORPORATION  
INST. 201003020024952

⑥ KEVIN G. BENNINGTON, MARK A. BRYANT, LARRY D.  
CLARKE AND MARC A. PALMER, SUCCESSOR  
CO-TRUSTEES OF THE DUROC TRUST  
274-000010-00  
INST. 20151160161901

\* 0.2704 ACRES P.R.O.  
+0.3173 ACRES ADDITIONAL R/W  
=0.5877 TOTAL ACRES

**PERTINENT DOCUMENTS USED:**  
INST. 201104200052126, INST. 201104200052126  
INST. 201508070109463, INST. 201003020024952  
INST. 20151160161901, INST. 200908250124342  
O.R. 24190, PG. J-17

**BASIS OF BEARINGS:**  
BEARINGS ARE BASED ON THE BEARING BETWEEN  
FRANKLIN COUNTY ENGINEER'S MONUMENT "FRANK72"  
AND FRANKLIN COUNTY GEODETIC SURVEY MONUMENT  
"WE130" BEING N 84°36'52" W, AS MEASURED WITH GPS  
METHODS USING GRID NORTH, OF THE OHIO STATE  
PLANE COORDINATE SYSTEM, SOUTH ZONE (2011).



*Steven L. Mullaney*  
STEVEN L. MULLANEY, P.S. 7900

2/19/2017  
DATE