



Evans, Mechwart, Hambleton & Tilton, Inc.  
 Engineers • Surveyors • Planners • Scientists  
 5500 New Albany Road, Columbus, OH 43054  
 Phone: 614.775.4500 Toll Free: 888.775.3648  
 emht.com

# SURVEY OF ACREAGE PARCEL

## SECTIONS 30 & 31, TOWNSHIP 15, RANGE 20

### CONGRESS LANDS EAST OF THE SCIOTO RIVER

#### CITY OF CANAL WINCHESTER, COUNTY OF FRANKLIN, STATE OF OHIO

Date: December 8, 2016

Job No: 2016-0726

Scale: 1" = 100'

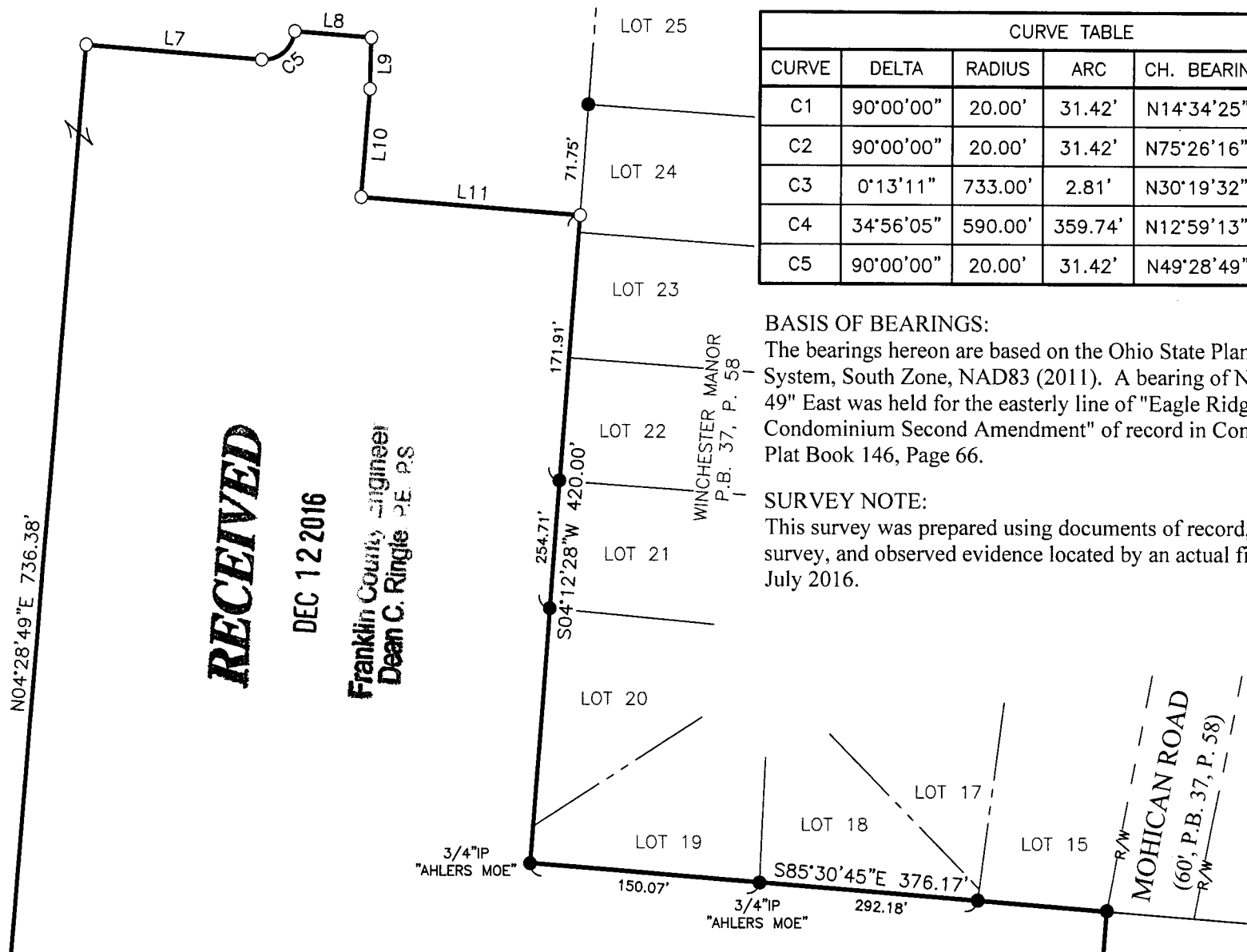
CURVE TABLE					
CURVE	DELTA	RADIUS	ARC	CH. BEARING	CH. DIST.
C1	90°00'00"	20.00'	31.42'	N14°34'25"E	28.20'
C2	90°00'00"	20.00'	31.42'	N75°26'16"W	28.28'
C3	0°13'11"	733.00'	2.81'	N30°19'32"W	2.81'
C4	34°56'05"	590.00'	359.74'	N12°59'13"W	354.19'
C5	90°00'00"	20.00'	31.42'	N49°28'49"E	28.28'

**BASIS OF BEARINGS:**

The bearings hereon are based on the Ohio State Plane Coordinate System, South Zone, NAD83 (2011). A bearing of North 04° 28' 49" East was held for the easterly line of "Eagle Ridge Condominium Second Amendment" of record in Condominium Plat Book 146, Page 66.

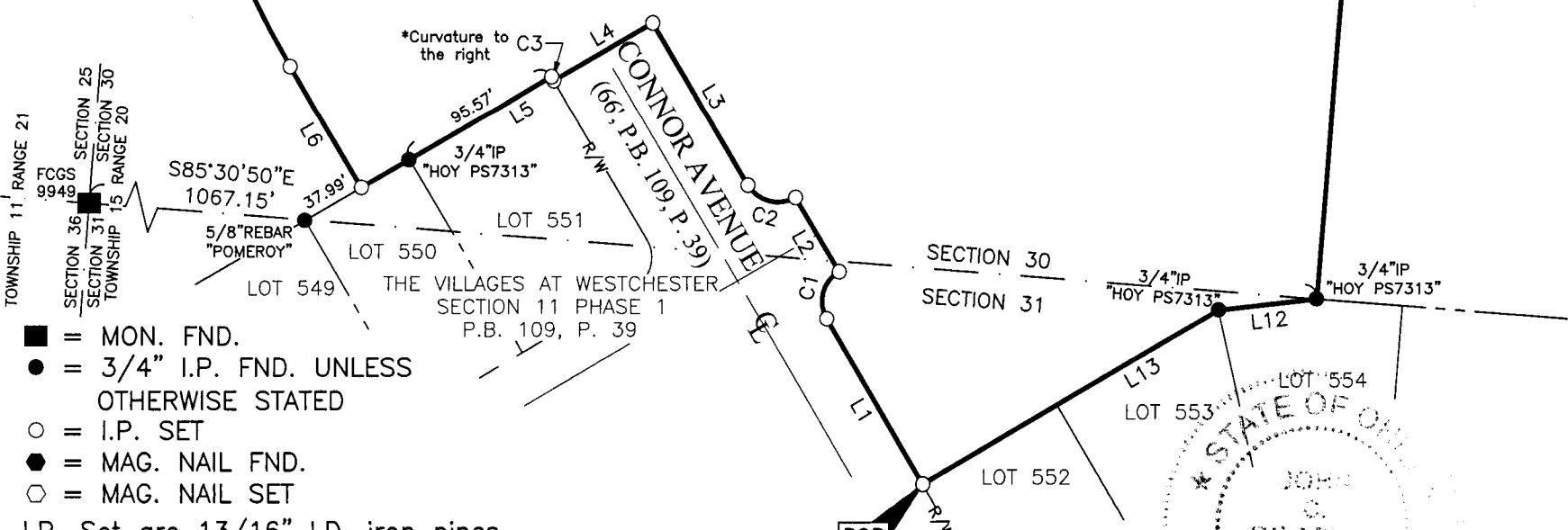
**SURVEY NOTE:**

This survey was prepared using documents of record, prior plats of survey, and observed evidence located by an actual field survey in July 2016.

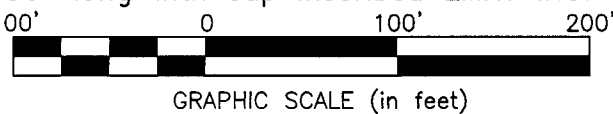


EASTSIDE PROPERTIES PARTNERSHIP  
 ORIG. 501.561 AC.  
 O.R. 16629E03  
 13.689 AC.  
 A.P.N. 184-000866

LINE TABLE		
LINE	BEARING	DISTANCE
L1	N30°26'31"W	110.00'
L2	N30°26'16"W	50.00'
L3	N30°26'16"W	109.19'
L4	S59°33'52"W	66.00'
L5	S59°33'52"W	127.27'
L6	N30°27'16"W	81.53'
L7	S85°31'11"E	115.00'
L8	S85°31'11"E	50.00'
L9	S01°01'25"W	33.17'
L10	S04°28'49"W	70.00'
L11	S85°31'11"E	142.84'
L12	S83°27'18"W	57.05'
L13	S59°33'44"W	197.50'



- = MON. FND.
  - = 3/4" I.P. FND. UNLESS OTHERWISE STATED
  - = I.P. SET
  - = MAG. NAIL FND.
  - = MAG. NAIL SET
- I.P. Set are 13/16" I.D. iron pipes 30" long with cap inscribed EMHT INC.



By John C. Dodgion 12/12/2016  
 John C. Dodgion  
 Professional Surveyor No. 8069  
 Date

U:\20160726\DWG\04-SHEETS\BOUNDARY\20160726-VS-BNDY-01.DWG plotted by MAGER, MARCUS on 12/12/2016 10:09:45 AM last saved by MMAGERS on 12/12/2016 10:09:19 AM