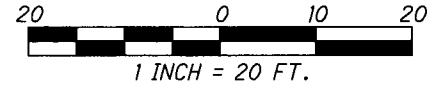


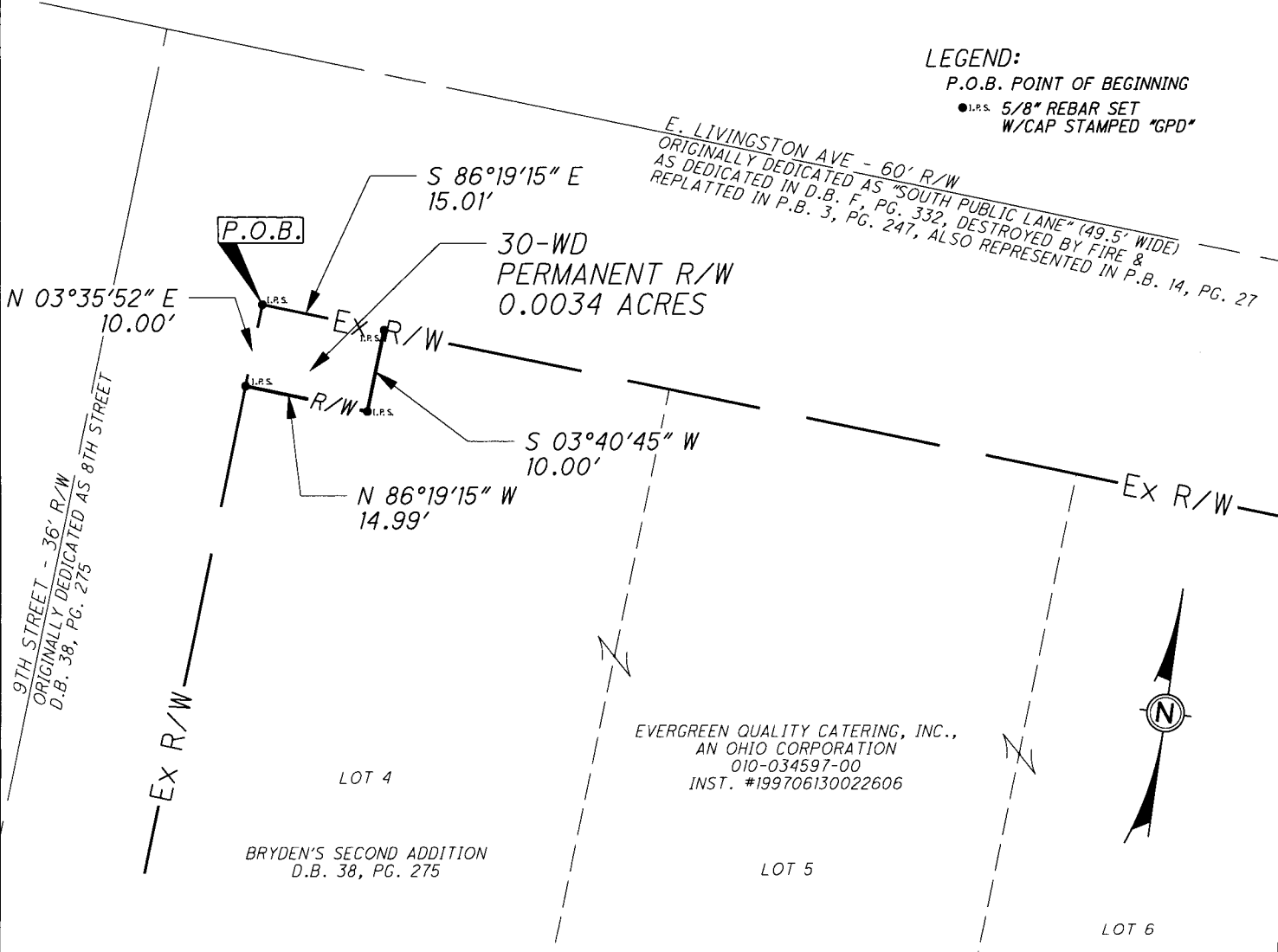


PERMANENT RIGHT OF WAY PARCEL 30-WD - EXHIBIT A

FRANKLIN COUNTY
 CITY OF COLUMBUS
 HALF SECTION 27, TOWNSHIP 5, RANGE 22
 REFUGEE LANDS



LEGEND:
 P.O.B. POINT OF BEGINNING
 ● I.P.S. 5/8" REBAR SET
 W/CAP STAMPED "GPD"



EVERGREEN QUALITY CATERING, INC.,
 AN OHIO CORPORATION
 010-034597-00
 INST. #199706130022606



BASIS OF BEARINGS:
 BEARINGS ARE BASED ON THE BEARING BETWEEN FRANKLIN COUNTY ENGINEER'S MONUMENTS "FRANK143" & "COC5-83" BEING N 77°09'24" W, AS RESOLVED BY GPS OBSERVATIONS, USING GRID NORTH OF THE OHIO STATE PLANE COORDINATE SYSTEM, SOUTH ZONE, NAD83 (1986).

PERTINENT DOCUMENTS USED:
 P.B. 3, PG. 247
 P.B. 14, PG. 27
 P.B. 38, PG. 275

RECEIVED

OCT 20 2016

Franklin County Engineer
 Dean C. Ringle, P.E., P.S.



Steven L. Mullaney
 STEVEN L. MULLANEY, P.S. 7900

10/19/2016
 DATE