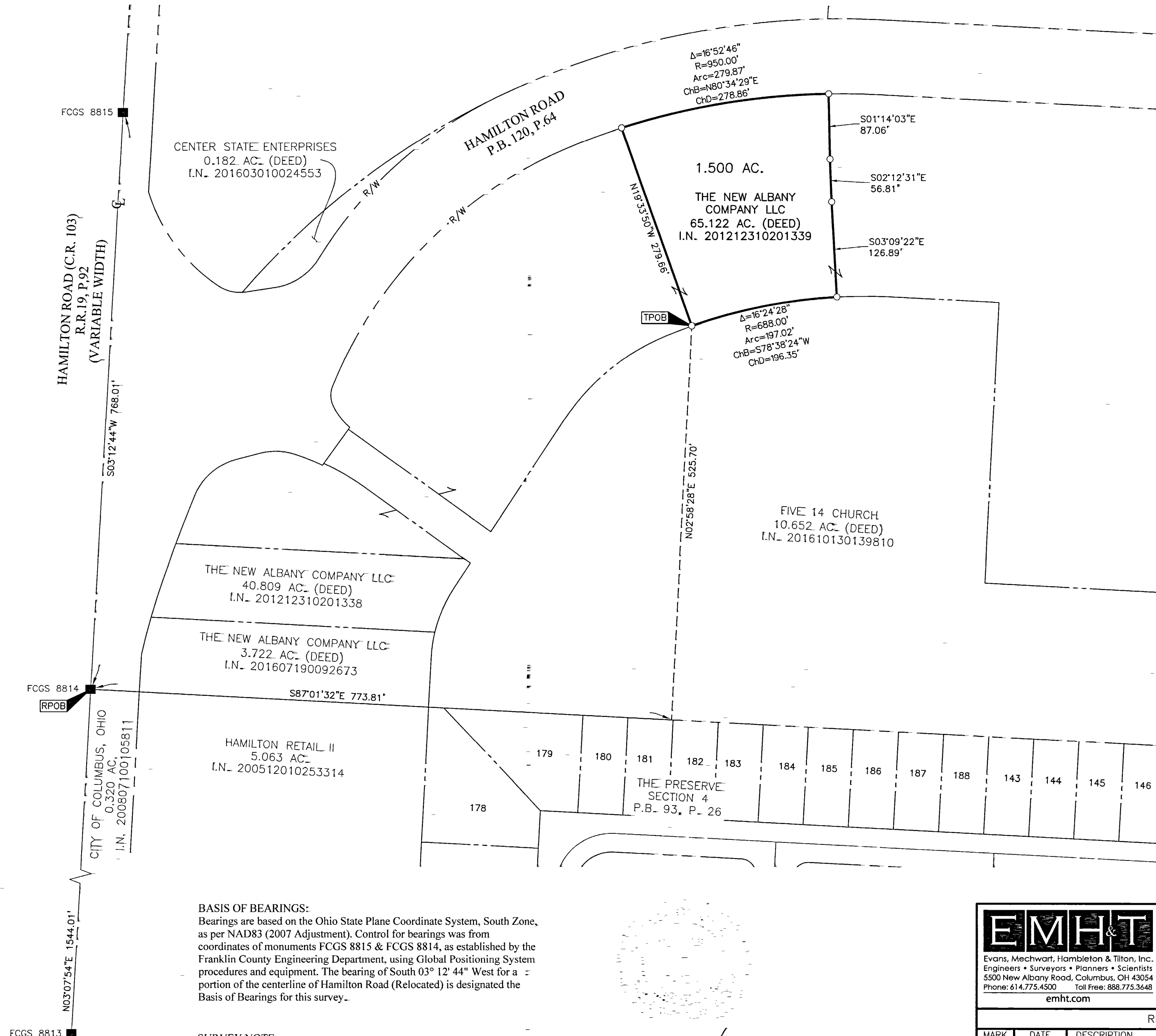


SURVEY OF ACREAGE PARCEL

QUARTER TOWNSHIP 3, TOWNSHIP 2, RANGE 16

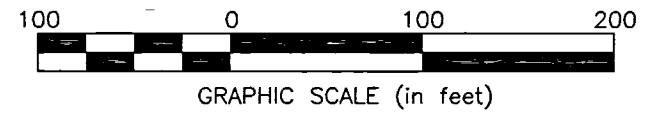
UNITED STATES MILITARY LANDS

CITY OF COLUMBUS, COUNTY OF FRANKLIN, STATE OF OHIO



RECEIVED
 NOV 18 2016
 Franklin County Engineer
 Don G. Ringle, P.E., F.S.

- = STONE FND.
 - = MON. FND.
 - = I.P. FND.
 - = I.P. SET
 - = MAG. NAIL FND.
 - = MAG. NAIL SET
 - ▲ = R.R. SPK. FND.
 - △ = R.R. SPK. SET
 - ◆ = P.K. NAIL FND.
- I.P. Set are 13/16" I.D. iron pipes 30" long with cap inscribed EMHT INC.



BASIS OF BEARINGS:
 Bearings are based on the Ohio State Plane Coordinate System, South Zone, as per NAD83 (2007 Adjustment). Control for bearings was from coordinates of monuments FCGS 8815 & FCGS 8814, as established by the Franklin County Engineering Department, using Global Positioning System procedures and equipment. The bearing of South 03° 12' 44" West for a portion of the centerline of Hamilton Road (Relocated) is designated the Basis of Bearings for this survey.

SURVEY NOTE:
 This survey was prepared using documents of record, prior plats of survey, and observed evidence located by an actual field survey completed in September of 2014.



By *Heather L. King* 11/17/16
 Heather L. King Date
 Professional Surveyor No. 8307

EMHT <small>Evans, Mechwart, Hambleton & Tilton, Inc. Engineers • Surveyors • Planners • Scientists 5500 New Albany Road, Columbus, OH 43054 Phone: 614.775.4500 Toll Free: 888.775.3648 emht.com</small>		Date: November 14, 2016
		Scale: 1" = 100'
		Job No: 2016-1161
		Sheet: 1 of 1
REVISIONS		
MARK	DATE	DESCRIPTION

J:\201611161\WORKSHEETS\BOUNDARY\201611161-VS-BNDY-01.DWG, plotted by WEBB, TEAGLE on 11/14/2016 5:09:55 PM
 XREF: