

SURVEY OF ACREAGE PARCELS

QUARTER TOWNSHIP 3, TOWNSHIP 2, RANGE 16

UNITED STATES MILITARY LANDS

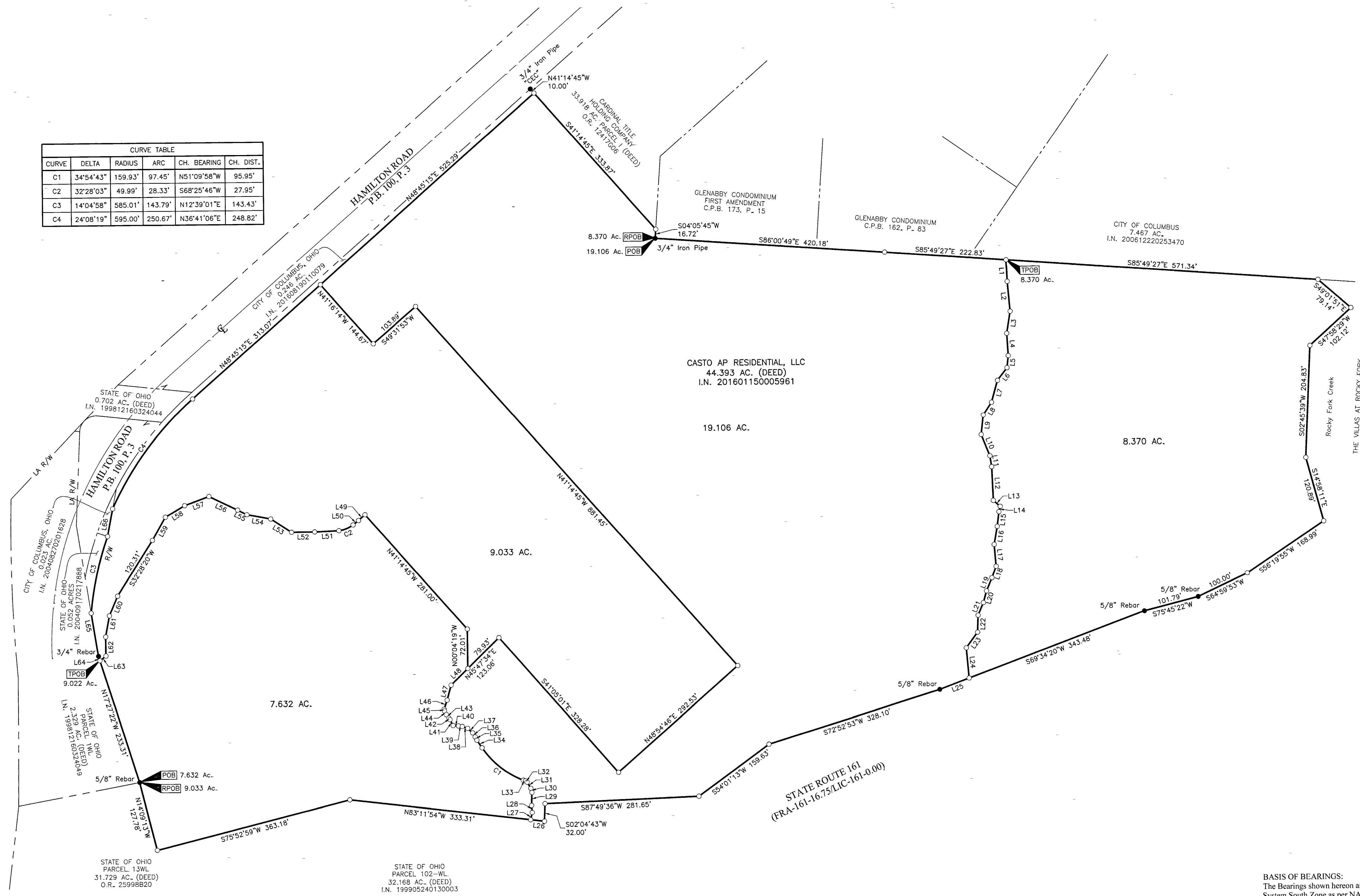
CITY OF COLUMBUS, COUNTY OF FRANKLIN, STATE OF OHIO

RECEIVED

OCT 26 2016

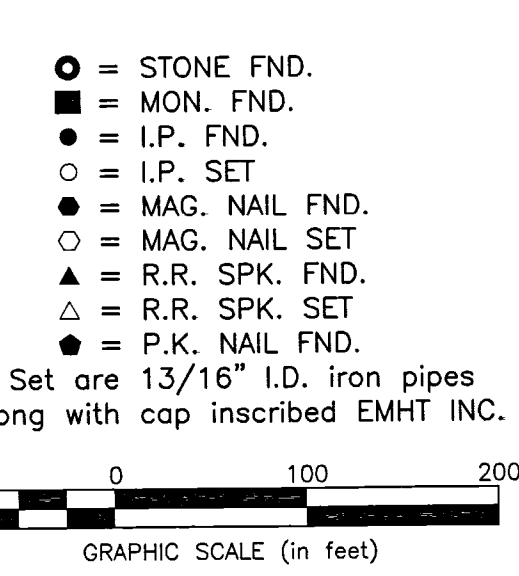
Franklin County Engineer
Dean C. Ringo, P.E., P.S.

CURVE TABLE				
CURVE	DELTA	RADIUS	ARC	CH. DIST.
C1	34°54'43"	159.93'	97.45'	N51°09'58"W 95.95'
C2	32°28'03"	49.99'	28.33'	S68°25'46"W 27.95'
C3	14°04'58"	585.01'	143.79'	N12°39'01"E 143.43'
C4	24°08'19"	595.00'	250.67'	N36°41'06"E 248.82'



LINE TABLE		
LINE	BEARING	DISTANCE
L1	S01°46'06"E	39.48'
L2	S05°03'06"E	54.56'
L3	S09°36'03"W	40.75'
L4	S03°13'56"E	40.96'
L5	S06°25'14"W	22.15'
L6	S37°26'46"W	29.13'
L7	S15°42'12"W	41.46'
L8	S33°30'17"W	27.71'
L9	S06°38'53"W	35.95'
L10	S21°25'12"E	41.79'
L11	S08°26'50"E	20.21'
L12	S02°08'59"E	61.95'
L13	S48°05'30"E	16.55'
L14	S13°40'25"W	10.12'
L15	S07°20'03"W	27.01'
L16	S10°12'57"W	33.64'
L17	S04°39'15"E	40.15'
L18	S20°39'24"W	22.41'
L19	S22°58'48"W	25.98'
L20	S15°42'46"W	22.08'
L21	S23°16'21"W	25.19'
L22	S02°10'23"W	30.94'
L23	S36°34'11"W	35.30'
L24	S04°36'23"E	55.40'
L25	S69°34'20"W	57.80'
L26	N83°11'54"W	25.25'
L27	N12°10'02"E	13.53'
L28	N04°32'16"W	12.64'
L29	N01°41'05"E	23.81'
L30	N13°51'05"W	7.52'
L31	N30°39'52"W	13.14'
L32	N51°06'56"W	3.98'
L33	N72°53'42"W	4.08'
L34	N33°42'37"W	16.76'

LINE TABLE		
LINE	BEARING	DISTANCE
L35	N26°51'29"W	6.89'
L36	N31°13'06"W	8.65'
L37	N47°12'09"W	12.31'
L38	N70°20'46"W	10.51'
L39	N81°23'04"W	6.90'
L40	N84°58'40"W	9.71'
L41	N27°48'23"W	12.29'
L42	N38°39'35"W	3.34'
L43	N35°55'40"W	7.74'
L44	N27°40'47"W	7.47'
L45	N09°34'04"W	3.05'
L46	N19°57'27"E	17.30'
L47	N15°30'04"E	28.50'
L48	N45°47'34"E	43.13'
L49	S48°46'57"W	15.94'
L50	S51°17'22"W	12.94'
L51	S87°40'59"W	44.23'
L52	S89°38'46"W	42.27'
L53	N56°55'08"W	45.18'
L54	N78°50'41"W	43.88'
L55	N62°19'34"W	19.00'
L56	N64°06'15"W	57.92'
L57	S69°58'41"W	47.56'
L58	S69°16'19"W	41.23'
L59	S29°51'27"W	48.68'
L60	S23°26'26"W	39.17'
L61	S10°43'15"W	39.06'
L62	S00°06'13"E	34.92'
L63	S52°23'16"W	13.96'
L64	N17°27'22"W	8.42'
L65	N08°58'04"W	79.96'
L66	N11°05'36"E	51.85'



BASIS OF BEARINGS:
The Bearings shown hereon are based on the Ohio State Plane Coordinate System South Zone as per NAD83 (2007). Said bearings originated from a field traverse which was tied (referenced) to said coordinate system by GPS observations of Franklin County Engineering Department monuments FRANK 78, FCGS 8815, FCGS 8814, FCGS 6624 RESET and FCGS 6675. The portion of the right-of-way of Hamilton Road, having a bearing of North 48°45'15" East and monumented as shown hereon, is designated the "basis of bearing" for this survey.

SURVEY NOTE:
This survey was prepared using documents of record, prior plats of survey, and observed evidence located by an actual field survey performed in August and October of 2015.

By *Heather L. King* 10/25/16
Heather L. King
Professional Surveyor No. 8307
Date

EMHT Evans, Mechwart, Hambleton & Tilton, Inc. Engineers • Surveyors • Planners • Scientists 820 New Albany Road, Columbus, OH 43204 Phone: 614.775.4500 Fax: 614.775.3448 emht.com		Date: October 6, 2016
		Scale: 1" = 100'
		Job No: 2015-1686
		Sheet: 1 of 1
REVISIONS		
MARK	DATE	DESCRIPTION
TW	10/25/16	corrected boundaries