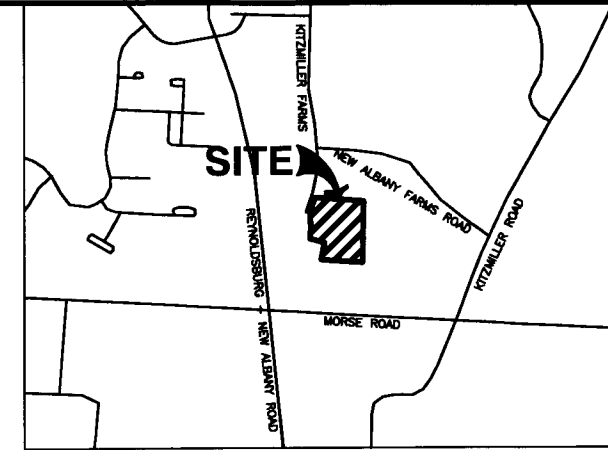


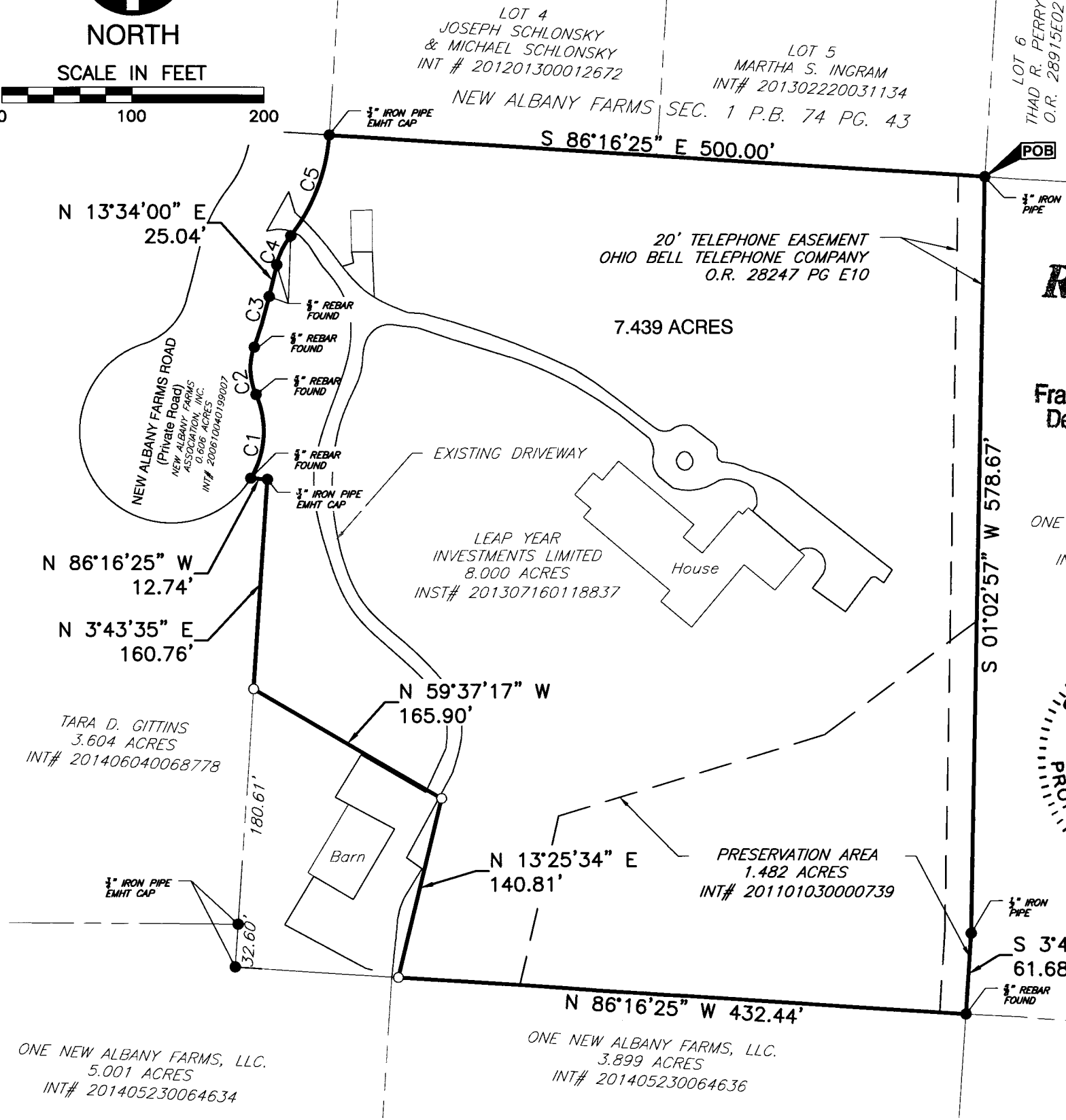
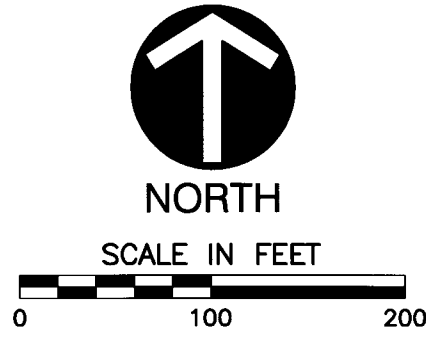
# PLAT OF SURVEY

SITUATED IN THE STATE OF OHIO, COUNTY OF FRANKLIN, CITY OF NEW ALBANY,  
FARM LOT 33, QUARTER TOWNSHIP 4, TOWNSHIP 2, RANGE 16, UNITED STATES MILITARY LANDS



VICINITY MAP  
APPROX. 1" = 2000'

CURVE TABLE					
CURVE #	LENGTH	RADIUS	DELTA	CHB	CHL
C1	66.45'	70.00'	54°23'20"	N 3°40'16" E	63.98'
C2	37.11'	50.00'	42°31'48"	N 2°15'10" W	36.27'
C3	40.41'	425.00'	5°26'50"	N 16°17'26" E	40.39'
C4	24.79'	58.19'	24°24'22"	N 25°46'17" E	24.60'
C5	83.70'	140.13'	34°13'17"	N 20°51'25" E	82.46'

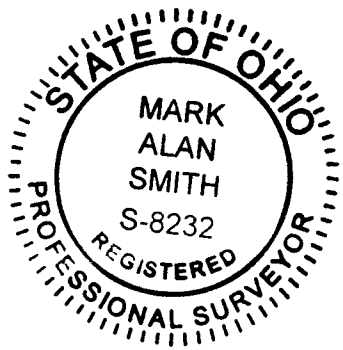


**RECEIVED**

NOV 01 2016

Franklin County Engineer  
Dean C. Ringle, P.E., P.S.

ONE NEW ALBANY FARMS, LLC.  
13.289 ACRES  
INT# 201009090117224



**PERTINENT DOCUMENTS USED**

- FRANKLIN COUNTY TAX MAPS
- DEEDS AND PLATS OF RECORD, FRANKLIN COUNTY RECORDER'S OFFICE

**IRON PINS:**

WHERE INDICATED HEREON, UNLESS OTHERWISE NOTED, ARE TO BE SET AND ARE 5/8" SOLID REBAR, THIRTY INCHES LONG WITH YELLOW PLASTIC CAP BEARING THE INITIALS "CEC."

**BASIS OF BEARING:**

BASIS OF BEARINGS ARE BASED ON THE NORTHERLY LINE OF A 8.000 ACRE TRACT IN THE NAME OF LEAP YEAR INVESTMENTS LIMITED BEING S 86°16'25" E, AS DESCRIBED IN INST. 201307160118837.

WE HEREBY CERTIFY THAT THE FOREGOING BOUNDARY SURVEY WAS PREPARED WITH ACTUAL FIELD MEASUREMENTS IN ACCORDANCE WITH CHAPTER 4733-37 OHIO ADMINISTRATIVE CODE.

*Mark Alan Smith*  
10/31/2016

CIVIL & ENVIRONMENTAL CONSULTANTS, INC.  
MARK ALAN SMITH  
PROFESSIONAL SURVEYOR NO.: S-8232

**LEGEND**

- IRON PIN/PIPE FOUND
- IRON PIN SET

**CEC**  
**Civil & Environmental Consultants, Inc.**  
250 Old Wilson Bridge Road · Suite 250 · Worthington, OH 43085  
614-540-6633 · 888-598-6808  
www.cecinc.com

CITY OF NEW ALBANY  
FRANKLIN COUNTY, OHIO

7.439 ACRES

DRAWN BY: ALB	CHECKED BY: MJA	APPROVED BY: MAS	DRAWING NO.:
DATE: OCTOBER 2016	DWG SCALE: 1" = 100'	PROJECT NO: 164-481	<b>PLAT</b>

P:\2016\164-481--Survey\164-481--SRV--LTSPLIT.dwg | LS:(10/27/2016 - abenson) - LP: 10/31/2016 3:44 PM