



Evans, Mechwart, Hambleton & Tilton, Inc.  
 Engineers • Surveyors • Planners • Scientists  
 5500 New Albany Road, Columbus, OH 43054  
 Phone: 614.775.4500 Toll Free: 888.775.3648  
 emht.com

# SURVEY OF ACREAGE PARCEL

QUARTER TOWNSHIP 3, TOWNSHIP 1, RANGE 18

UNITED STATES MILITARY DISTRICT

CITY OF COLUMBUS, COUNTY OF FRANKLIN, STATE OF OHIO

Date:	April 5, 2016
Scale:	1" = 40'
Job No.	2015-0504

F-8-B

### BASIS OF BEARINGS:

The bearings shown hereon are based on the Ohio State Plane Coordinate System South Zone as per NAD83 (1986 Adjustment). Said coordinates originated from a field traverse which was tied (referenced) to said coordinate system by Static GPS observations of Franklin County Engineering Department monuments COC4-83 and RINGLE. A bearing of South 86° 57' 16" East was held for that section of King Avenue between Olentangy River Road and Cannon Drive.

### SURVEY NOTE:

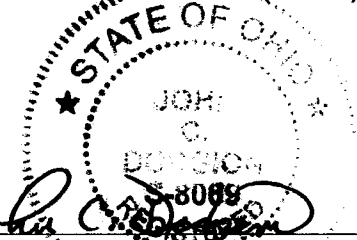
This survey was prepared using documents of record, prior plats of survey and observed evidence located by an actual field survey.

- = MON. FND.
- = I.P. FND.
- = I.P. SET

I.P. Set are 13/16" I.D. iron pipe with cap inscribed EMHT INC



GRAPHIC SCALE (in feet)



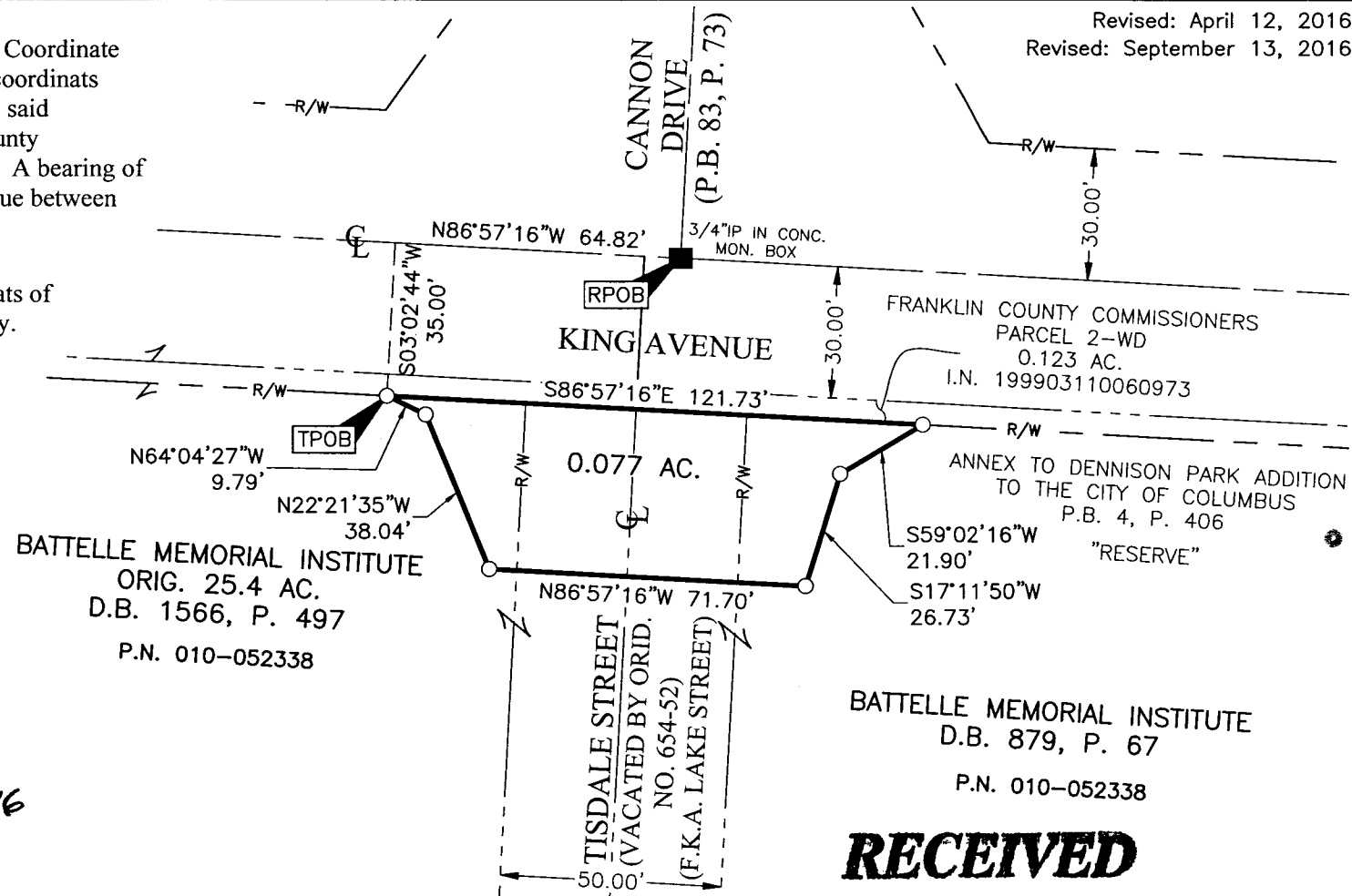
By John C. Dodgion  
 John C. Dodgion  
 Professional Surveyor No. 8069

09/13/2016  
 Date

J:\20150504\DWG\04SHEETS\BOUNDARY\20150504-VS-BNDY-01 REV.DWG plotted by DODGION, JOHN on 9/13/2016 8:55:49 AM last saved by JDODGION on 9/13/2016 8:37:41 AM

Xrefs:

Revised: April 12, 2016  
 Revised: September 13, 2016



**RECEIVED**

SEP 15 2016

Franklin County Engineer  
 Dean C. Ringle, P.E., P.S.