



Evans, Mechwart, Hambleton & Tilton, Inc.  
 Engineers • Surveyors • Planners • Scientists  
 5500 New Albany Road, Columbus, OH 43054  
 Phone: 614.775.4500 Toll Free: 888.775.3648  
 emht.com

# SURVEY OF ACREAGE PARCEL

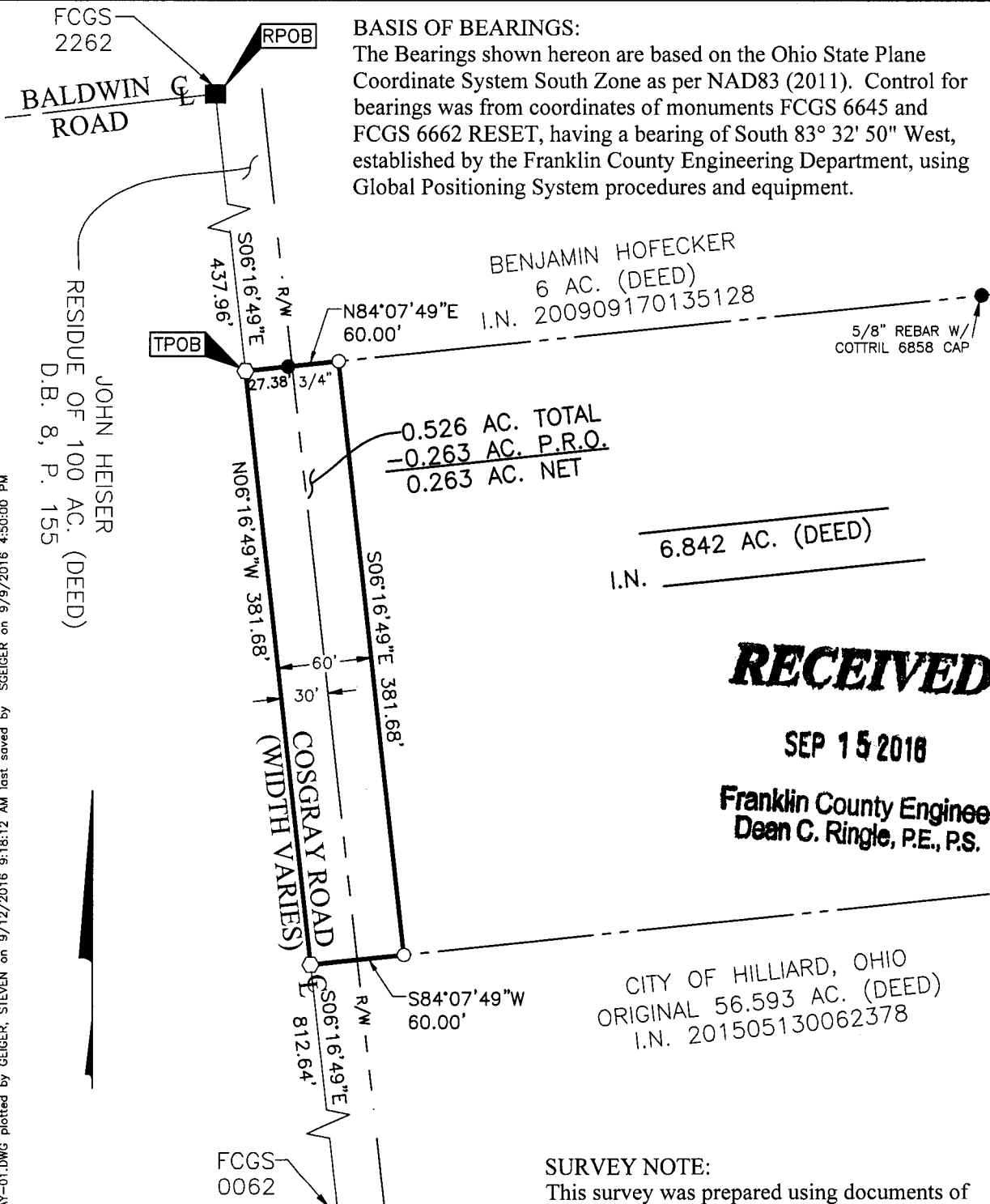
VIRGINIA MILITARY SURVEY NO. 6366

CITY OF HILLIARD, COUNTY OF FRANKLIN, STATE OF OHIO

Date: September 10, 2016

Job No: 2016-0287

Scale: 1" = 100'



**BASIS OF BEARINGS:**

The Bearings shown hereon are based on the Ohio State Plane Coordinate System South Zone as per NAD83 (2011). Control for bearings was from coordinates of monuments FCGS 6645 and FCGS 6662 RESET, having a bearing of South 83° 32' 50" West, established by the Franklin County Engineering Department, using Global Positioning System procedures and equipment.

BENJAMIN HOFECKER  
 6 AC. (DEED)  
 I.N. 200909170135128

JOHN HEISER  
 RESIDUE OF 100 AC. (DEED)  
 D.B. 8, P. 155

0.526 AC. TOTAL  
 -0.263 AC. P.R.O.  
 0.263 AC. NET

6.842 AC. (DEED)  
 I.N. \_\_\_\_\_

CITY OF HILLIARD, OHIO  
 ORIGINAL 56.593 AC. (DEED)  
 I.N. 201505130062378

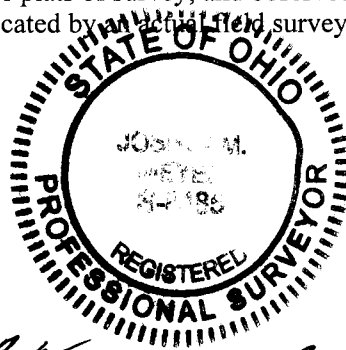
**RECEIVED**  
 SEP 15 2016  
 Franklin County Engineer  
 Dean C. Ringle, P.E., P.S.

- = MON. FND.
- = I.P. FND.
- = I.P. SET
- = MAG. NAIL FND.
- = MAG. NAIL SET

I.P. Set are 13/16" I.D. iron pipes 30" long with cap inscribed EMHT INC.



**SURVEY NOTE:**  
 This survey was prepared using documents of record, prior plats of survey, and observed evidence located by an independent survey.



By Joshua M. Meyer 9-10-2016  
 Joshua M. Meyer Date  
 Professional Surveyor No. 8485

J:\20160287\DWG\04SHEETS\BOUNDARY\20160287-VS-BNDY-RWAY-01.DWG plotted by GEIGER, STEVEN on 9/12/2016 9:18:12 AM last saved by SGEIGER on 9/9/2016 4:50:00 PM  
 Xrefs: