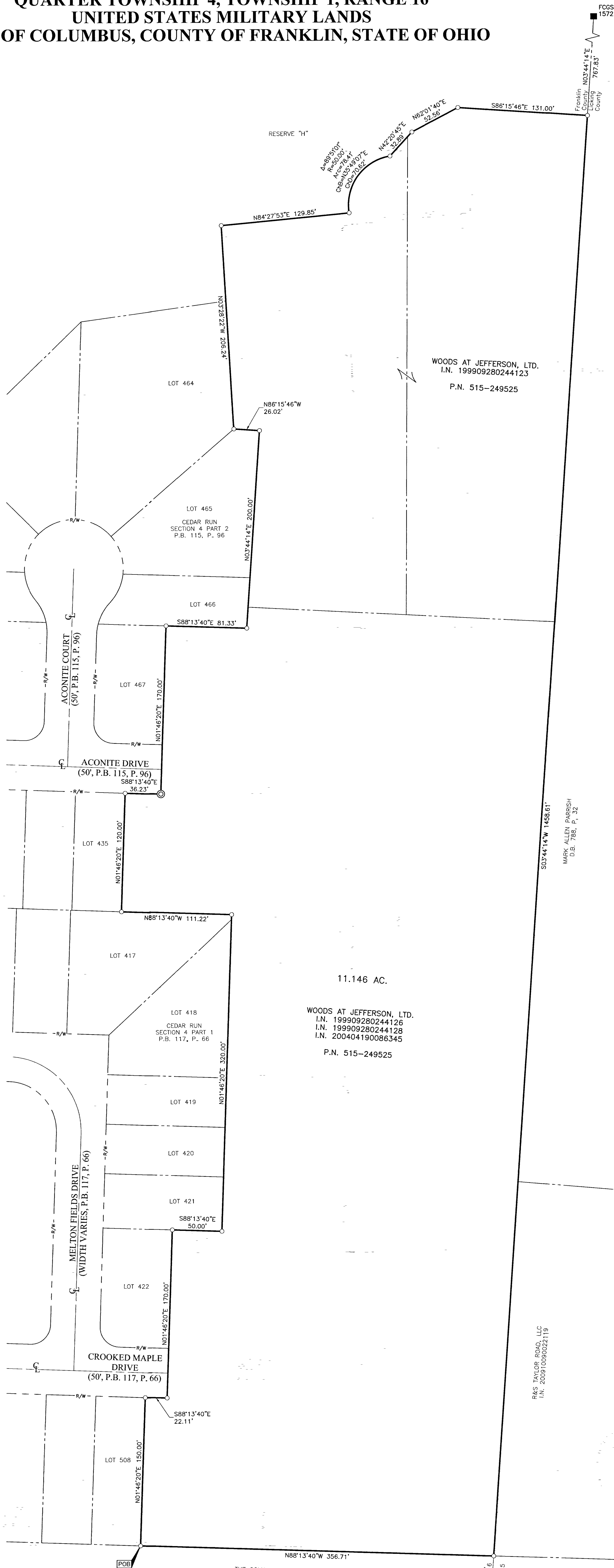


SURVEY OF ACREAGE PARCEL

QUARTER TOWNSHIP 4, TOWNSHIP 1, RANGE 16

UNITED STATES MILITARY LANDS

CITY OF COLUMBUS, COUNTY OF FRANKLIN, STATE OF OHIO



RECEIVED

AUG 04 2016
Franklin County Engineer
Dean C. Ringle, P.E., P.S.

BASIS OF BEARINGS:
The Bearings shown hereon were transferred from a field traverse originating from and tying to Franklin County Survey Control Monuments, including F.C.G.S. 1515 and F.C.G.S. 1572 and are based on the Ohio State Plane Coordinate System, South Zone as per NAD 83, 1986 adjustment, having a calculated bearing of South 86°06'15" East between said monuments.

SURVEY NOTE:
This survey was prepared using documents of record, prior plats of survey, and observed evidence located by an actual field survey prepared in July 2016.

By Matthew Kirk August 16
Matthew A. Kirk
Professional Surveyor No. 7865

EMHT		Date: August 3, 2016
Evans, Mechwart, Hambleton & Tilton, Inc. Engineers • Surveyors • Planners • Scientists 550 New Albany Road, Columbus, OH 43254 Phone: 614.775.4500 Toll Free: 888.775.3648 emht.com		Scale: 1" = 50'
Job No: 2016-0663		Sheet: 1 of 1
REVISIONS		
MARK	DATE	DESCRIPTION

- = STONE FND.
- = MON. FND.
- = I.P. FND.
- = I.P. SET
- = MAG. NAIL FND.
- = MAG. NAIL SET
- ▲ = R.R. SPK. FND.
- △ = R.R. SPK. SET
- = P.K. NAIL FND.
- ◎ = PERM. MRKR. SET

I.P. Set are 13/16" I.D. iron pipes 30" long with cap stamped EMHT INC. Permanent Markers set are one-inch solid iron pins with aluminum cap stamped EMHT INC.

50 0 50 100
GRAPHIC SCALE (in feet)

3/20/2016 10:00 AM (GMT-5) C:\Users\mcc\OneDrive\Documents\20160663-VS-BNDY-01.dwg plotted by: MANSERS, MARCUS on 8/2/2016 8:16:12 AM last saved by: MANSERS, MARCUS on 8/2/2016 8:07:07 AM