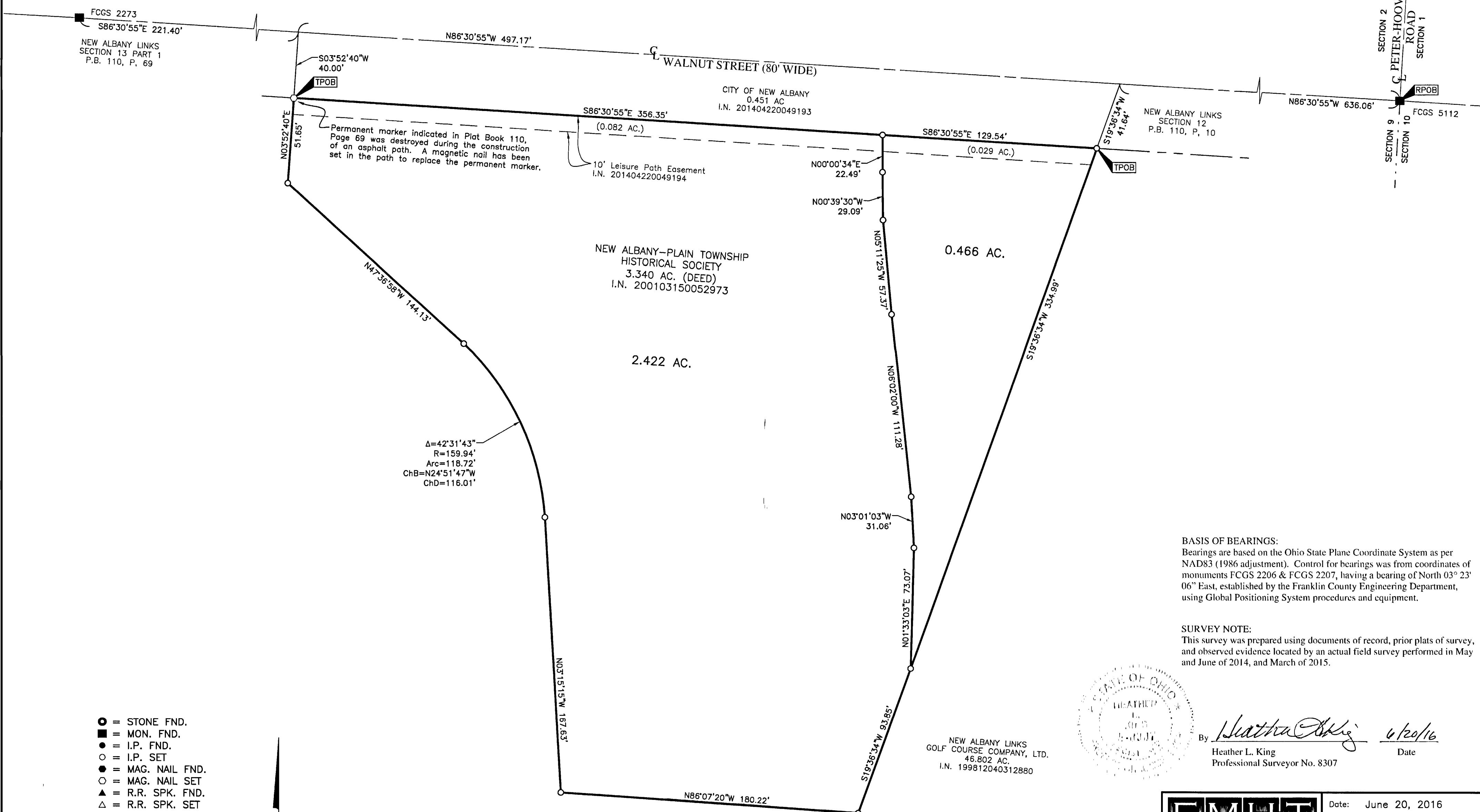


SURVEY OF ACREAGE PARCELS

LOT 18, SECTION 9, QUARTER TOWNSHIP 1, TOWNSHIP 2, RANGE 16

UNITED STATES MILITARY LANDS

CITY OF NEW ALBANY, COUNTY OF FRANKLIN, STATE OF OHIO

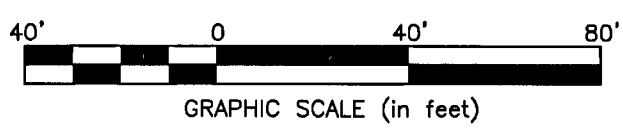


BASIS OF BEARINGS:
 Bearings are based on the Ohio State Plane Coordinate System as per NAD83 (1986 adjustment). Control for bearings was from coordinates of monuments FCGS 2206 & FCGS 2207, having a bearing of North $03^{\circ}23'06''$ East, established by the Franklin County Engineering Department, using Global Positioning System procedures and equipment.

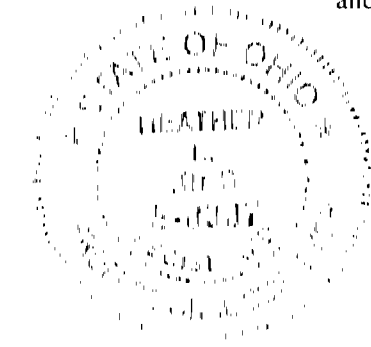
SURVEY NOTE:
 This survey was prepared using documents of record, prior plats of survey, and observed evidence located by an actual field survey performed in May and June of 2014, and March of 2015.

- = STONE FND.
- = MON. FND.
- = I.P. FND.
- = I.P. SET
- = MAG. NAIL FND.
- = MAG. NAIL SET
- ▲ = R.R. SPK. FND.
- △ = R.R. SPK. SET
- ◆ = P.K. NAIL FND.
- ⊙ = PERM. MRKR. SET

I.P. Set are 13/16" I.D. iron pipes 30" long with cap stamped EMHT INC. Permanent Markers set are one-inch solid iron pins with aluminum cap stamped EMHT INC.



NEW ALBANY LINKS
 GOLF COURSE COMPANY, LTD.
 46.802 AC.
 I.N. 199812040312880



By Heather L. King 6/20/16
 Heather L. King Date
 Professional Surveyor No. 8307

EMHT		Date: June 20, 2016
Evans, Mechwart, Hambleton & Tilton, Inc. Engineers • Surveyors • Planners • Scientists 5500 New Albany Road, Columbus, OH 43054 Phone: 614.775.4500 Toll Free: 888.775.3648 emht.com		Scale: 1" = 40'
		Job No: 2014-1042
		Sheet: 1 of 1
REVISIONS		
MARK	DATE	DESCRIPTION

JUN 20 2016
 Franklin County Engineer
 Dean C. Ringle, P.E., P.C.