



Evans, Mechwart, Hambleton & Tilton, Inc.
 Engineers • Surveyors • Planners • Scientists
 5500 New Albany Road, Columbus, OH 43054
 Phone: 614.775.4500 Toll Free: 888.775.3648
 emht.com

RIGHT-OF-WAY EASEMENT

QUARTER TOWNSHIP 3, TOWNSHIP 1, RANGE 18
 UNITED STATES MILITARY LANDS
 CITY OF COLUMBUS, COUNTY OF FRANKLIN, STATE OF OHIO

Date: July 22, 2016

Scale: 1" = 100'

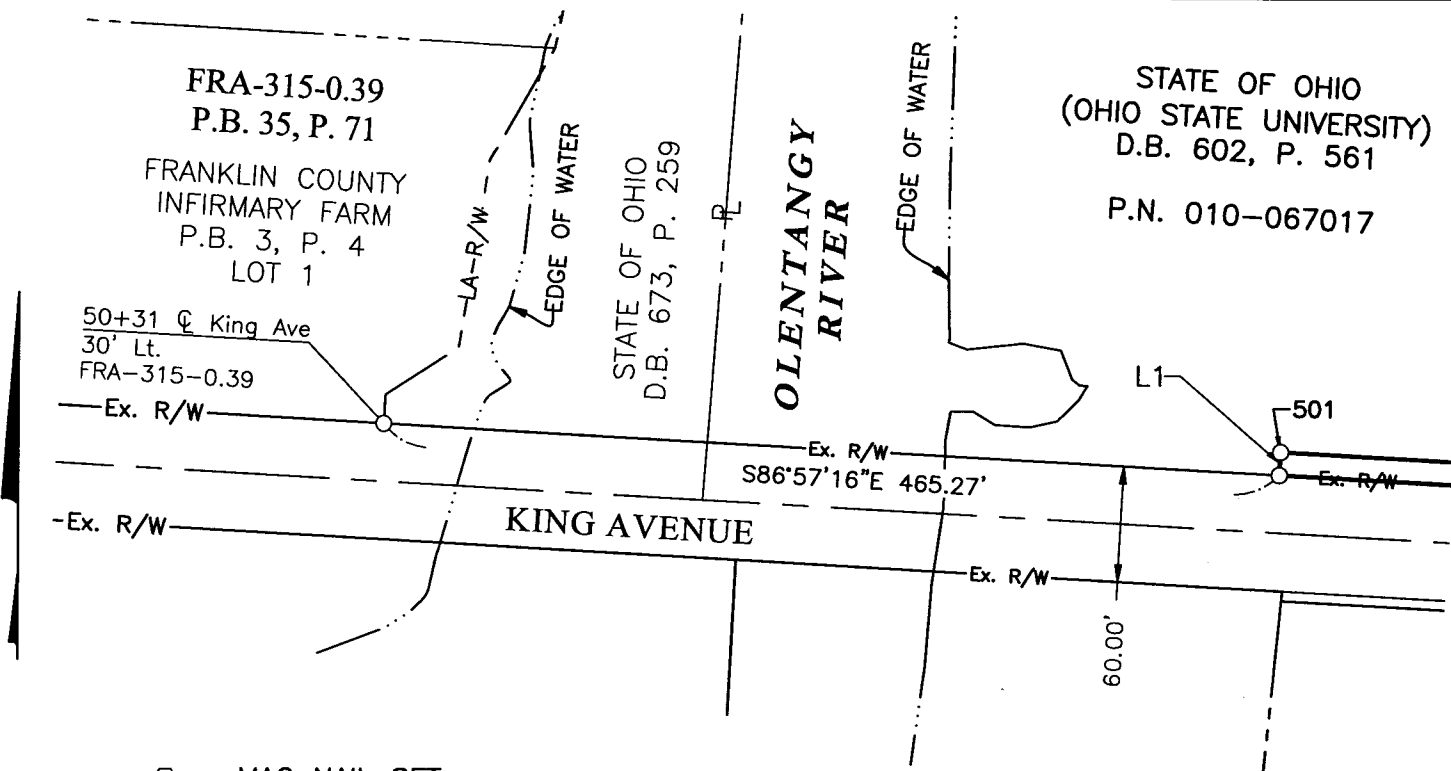
Job No: 2015-0504

NOTE:
 Line Table on Sheet 7 of 9.
 Curve Table on Sheet 8 of 9.

SURVEY NOTE:
 This survey was prepared using documents of record,
 prior plats of survey, and observed evidence located
 by an actual field survey in March 2016.

1/9

J:\20150504\DWG\CASHEETS\EASEMENTS\20150504-15-ESM-RWAY-01.DWG modified by GERRI, STEVEN on 7/26/2016 1:31:34 PM last saved by SDEBER on 7/26/2016 1:58:44 PM
 Xref: 20150504-15-REFR-N.DWG & 20150504-15-REFR-E.DWG & 20150504-15-REFR-L.DWG & 20150504-15-REFR-M.DWG & 20150504-15-REFR-N.DWG & 20150504-15-REFR-E.DWG & 20150504-15-REFR-L.DWG & 20150504-15-REFR-M.DWG

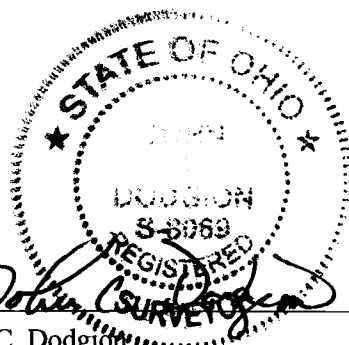


SEE SHEET 2 OF 9

RECEIVED

JUL 29 2016

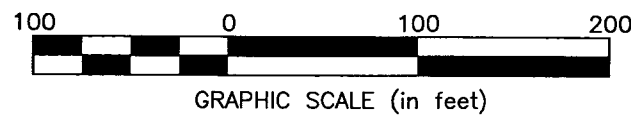
Franklin County Engineer
 Dean C. Ringle, P.E., P.S.



By *John C. Dodgion*
 John C. Dodgion
 Professional Surveyor No. 8069

07/26/2016
 Date

○ = MAG NAIL SET
 ○ = I.P. SET
 I.P. Set are 13/16" I.D. iron pipes
 30" long with cap inscribed EMHT INC.



BASIS OF BEARINGS:
 The bearings shown on these plans were transferred from a field traverse originating from and tying to Franklin County Survey Control Monuments, including MORLAN and TACKETT, and is based on the Ohio State Plane Coordinate System, South Zone as per NAD 83. The portion of the centerline of King Avenue, having a bearing of S86°57'16"E, is designated the "basis of bearing" for this plat.



Evans, Mechwart, Hambleton & Tilton, Inc.
 Engineers • Surveyors • Planners • Scientists
 5500 New Albany Road, Columbus, OH 43054
 Phone: 614.775.4500 Toll Free: 888.775.3648
 emht.com

RIGHT-OF-WAY EASEMENT

QUARTER TOWNSHIP 3, TOWNSHIP 1, RANGE 18
 UNITED STATES MILITARY LANDS
 CITY OF COLUMBUS, COUNTY OF FRANKLIN, STATE OF OHIO

Date:	July 22, 2016
Scale:	1" = 100'
Job No:	2015-0504

1A
9

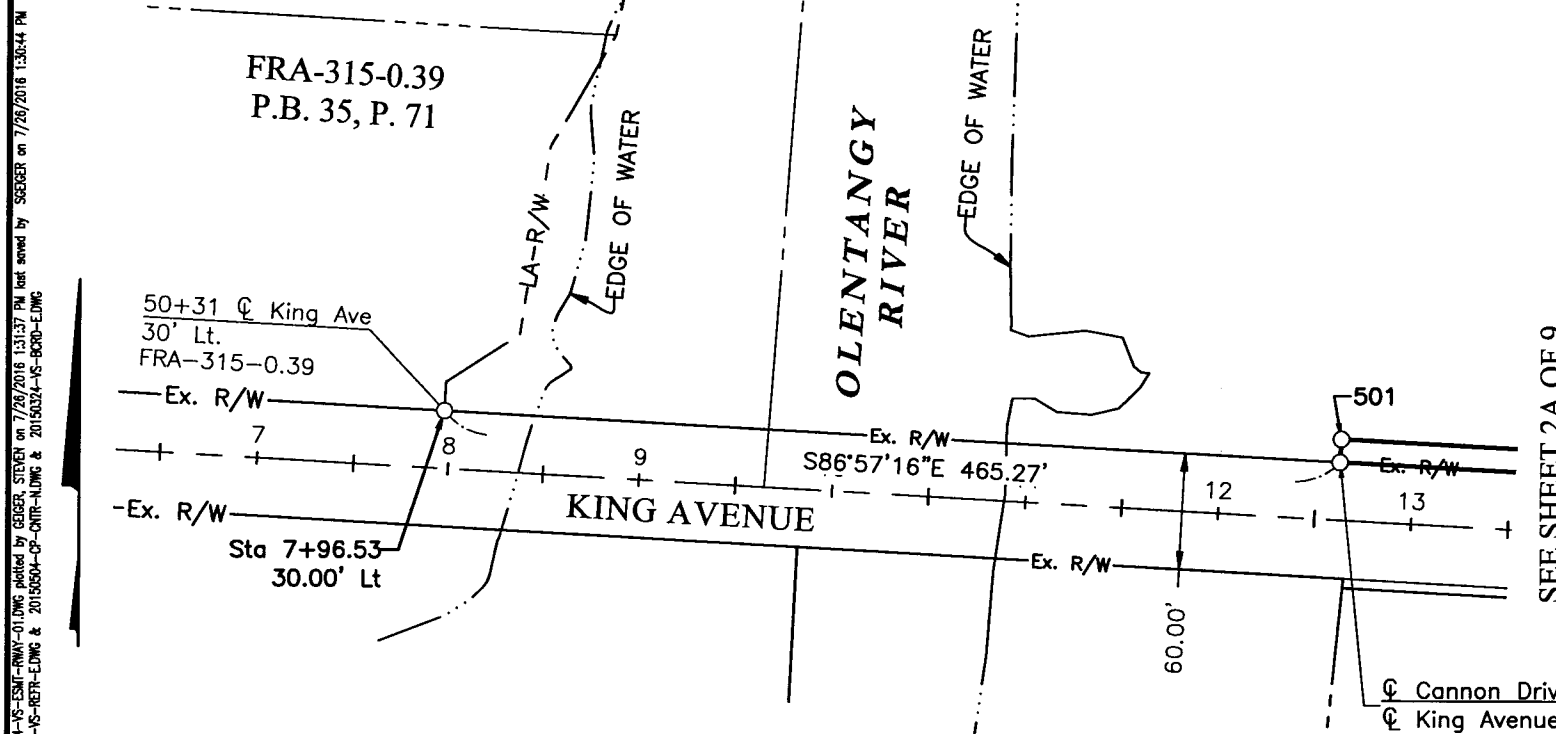
NOTE:
 Line Table on Sheet 7 of 9.
 Curve Table on Sheet 8 of 9.
 Station and Offset Table on Sheet 9 of 9

Stationing shown hereon is from
 Cannon Drive Centerline Plat
 P.B. _____, P. _____,
 unless stated otherwise.

RECEIVED

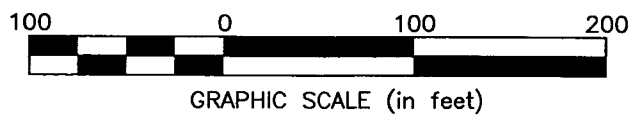
JUL 29 2016

Franklin County Engineer
 Dean C. Ringle, P.E., P.S.



SEE SHEET 2A OF 9

○ = MAG NAIL SET
 ○ = I.P. SET
 I.P. Set are 13/16" I.D. iron pipes
 30" long with cap inscribed EMHT INC.



J:\20150504\DWG\ASHEETS\ASHEETS\20150504-YS-ESMT-RWAY-01.DWG plotted by GEBER, STEVEN on 7/26/2016 1:31:37 PM last saved by SEEGER on 7/26/2016 1:36:44 PM
 Xrefs: 20150504-CS-RETR-NLWNG & 20150504-YS-RETR-EDWG & 20150504-CP-CNTR-NLWNG & 20150504-YS-BORD-EDWG



Evans, Mechwart, Hambleton & Tilton, Inc.
 Engineers • Surveyors • Planners • Scientists
 5500 New Albany Road, Columbus, OH 43054
 Phone: 614.775.4500 Toll Free: 888.775.3648
 emht.com

RIGHT-OF-WAY EASEMENT

QUARTER TOWNSHIP 3, TOWNSHIP 1, RANGE 18
 UNITED STATES MILITARY LANDS
 CITY OF COLUMBUS, COUNTY OF FRANKLIN, STATE OF OHIO

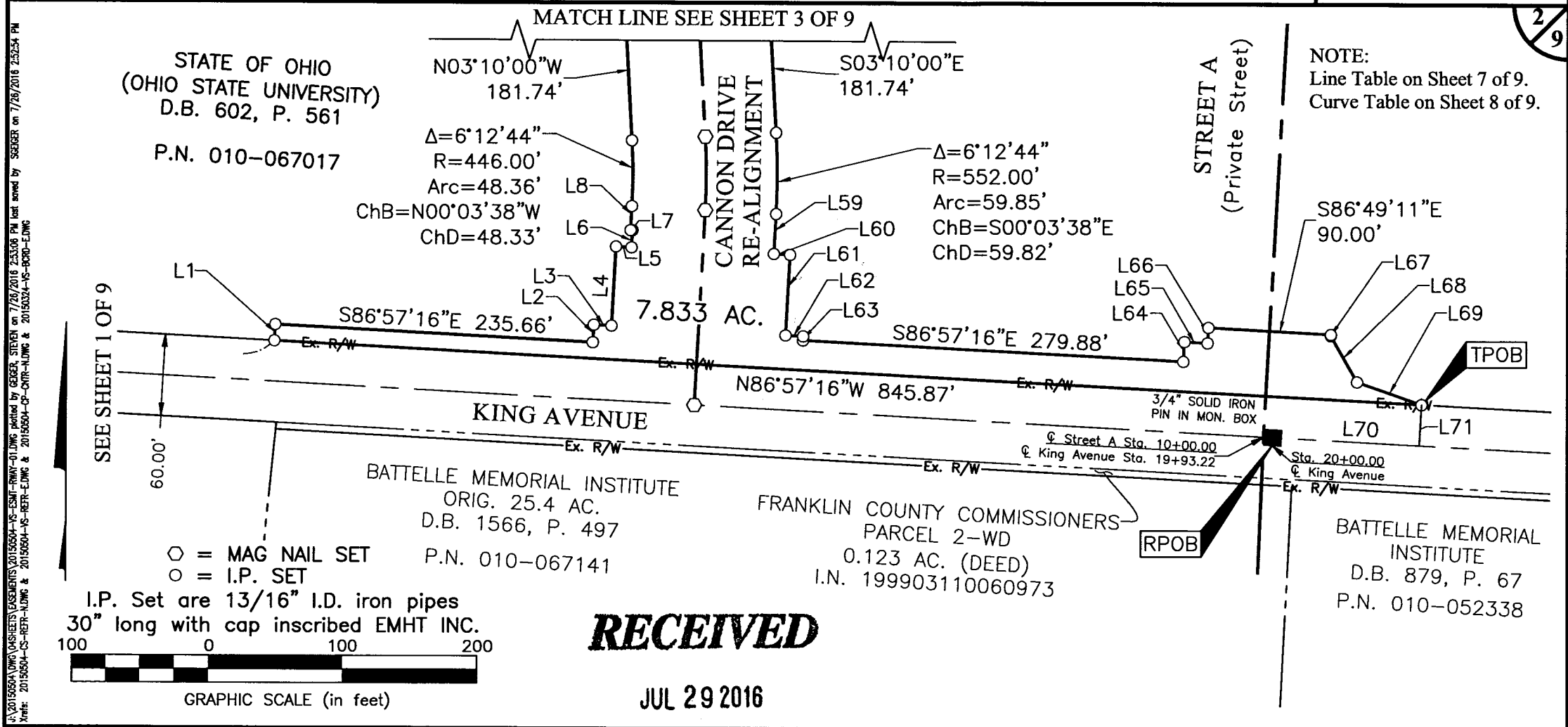
Date: July 22, 2016

Scale: 1" = 100'

Job No: 2015-0504

2/9

NOTE:
 Line Table on Sheet 7 of 9.
 Curve Table on Sheet 8 of 9.



RECEIVED

JUL 29 2016

Franklin County Engineer
 Dean C. Ringle, P.E., P.S.

U:\20150504 DWG\ASSETS\EASEMENTS\20150504-NS-ESMT-RWAY-01.DWG created by GEBER, STEVEN on 7/26/2016 2:33:06 PM last saved by SEGER, on 7/26/2016 2:52:54 PM
 Xrefs: 20150504-CS-REPR-N.DWG & 20150504-CS-REPR-EDWG & 20150504-CS-CYR-N.DWG & 20150324-NS-BOPD-EDWG



Evans, Mechwart, Hambleton & Tilton, Inc.
 Engineers • Surveyors • Planners • Scientists
 5500 New Albany Road, Columbus, OH 43054
 Phone: 614.775.4500 Toll Free: 888.775.3648
 emht.com

RIGHT-OF-WAY EASEMENT

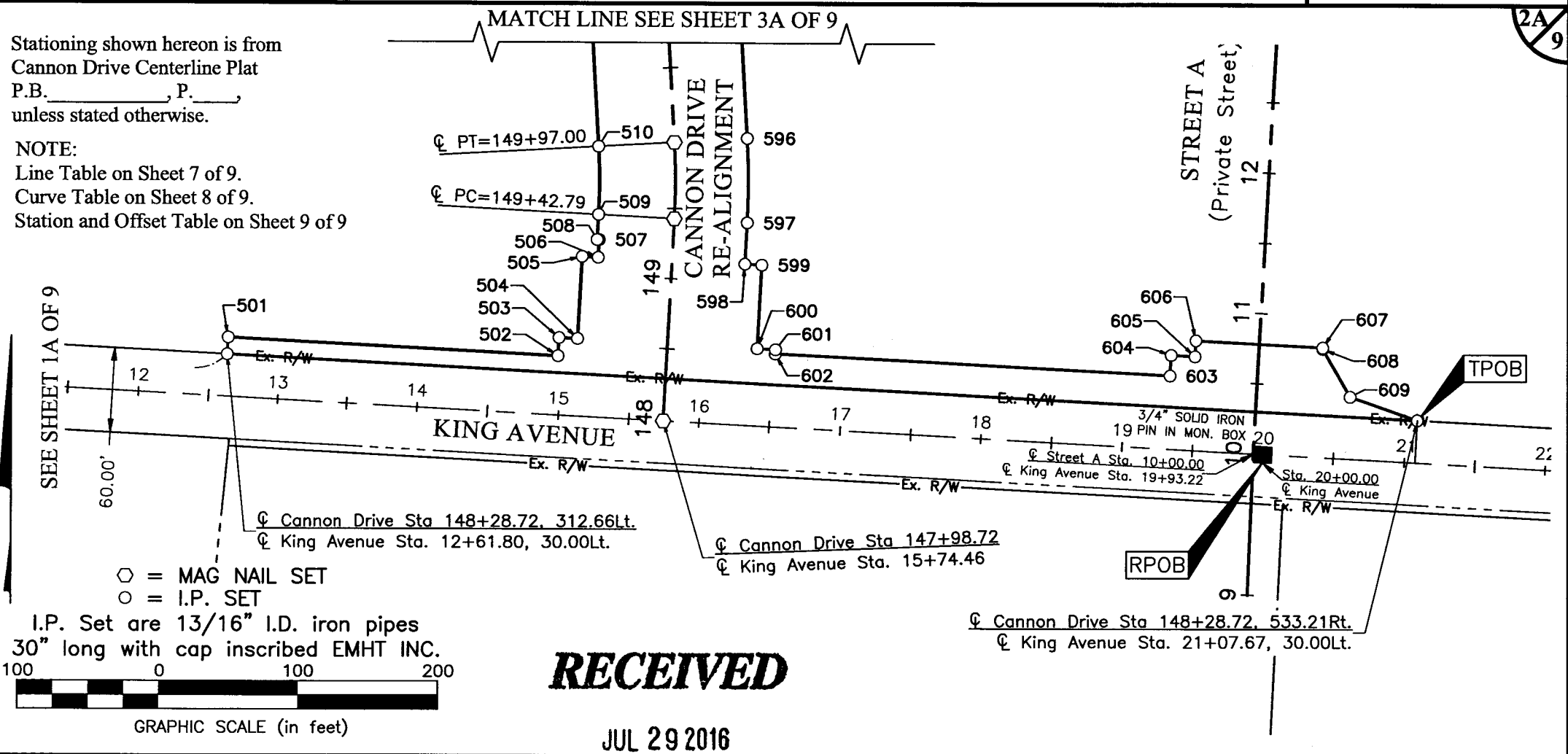
QUARTER TOWNSHIP 3, TOWNSHIP 1, RANGE 18
 UNITED STATES MILITARY LANDS
 CITY OF COLUMBUS, COUNTY OF FRANKLIN, STATE OF OHIO

Date:	July 22, 2016
Scale:	1" = 100'
Job No:	2015-0504

2A
9

Stationing shown hereon is from
 Cannon Drive Centerline Plat
 P.B. _____, P. _____
 unless stated otherwise.

NOTE:
 Line Table on Sheet 7 of 9.
 Curve Table on Sheet 8 of 9.
 Station and Offset Table on Sheet 9 of 9



SEE SHEET 1A OF 9

MATCH LINE SEE SHEET 3A OF 9

○ = MAG NAIL SET
 ○ = I.P. SET

I.P. Set are 13/16" I.D. iron pipes
 30" long with cap inscribed EMHT INC.



GRAPHIC SCALE (in feet)

RECEIVED

JUL 29 2016

Franklin County Engineer
 Dean C. Ringle, P.E., P.S.

U:\20150504\DWG\ASHEETS\EASEMENTS\20150504-VS-CSM-FRWAY-01.DWG plotted by GEGER, STEVEN on 7/26/2016 2:54:14 PM last saved by SBERGER on 7/26/2016 2:33:54 PM
 Xrefs: 20150504-VS-RETR-N.DWG & 20150504-VS-RETR-E.DWG & 20150504-VS-RETR-N.DWG & 20150504-VS-RETR-E.DWG



Evans, Mechwart, Hambleton & Tilton, Inc.
 Engineers • Surveyors • Planners • Scientists
 5500 New Albany Road, Columbus, OH 43054
 Phone: 614.775.4500 Toll Free: 888.775.3648
 emht.com

RIGHT-OF-WAY EASEMENT

QUARTER TOWNSHIP 3, TOWNSHIP 1, RANGE 18
 UNITED STATES MILITARY LANDS
 CITY OF COLUMBUS, COUNTY OF FRANKLIN, STATE OF OHIO

Date: July 22, 2016

Job No: 2015-0504

Scale: 1" = 100'

3/9

MATCH LINE SEE SHEET 4 OF 9

NOTE:
 Line Table on Sheet 7 of 9.
 Curve Table on Sheet 8 of 9.

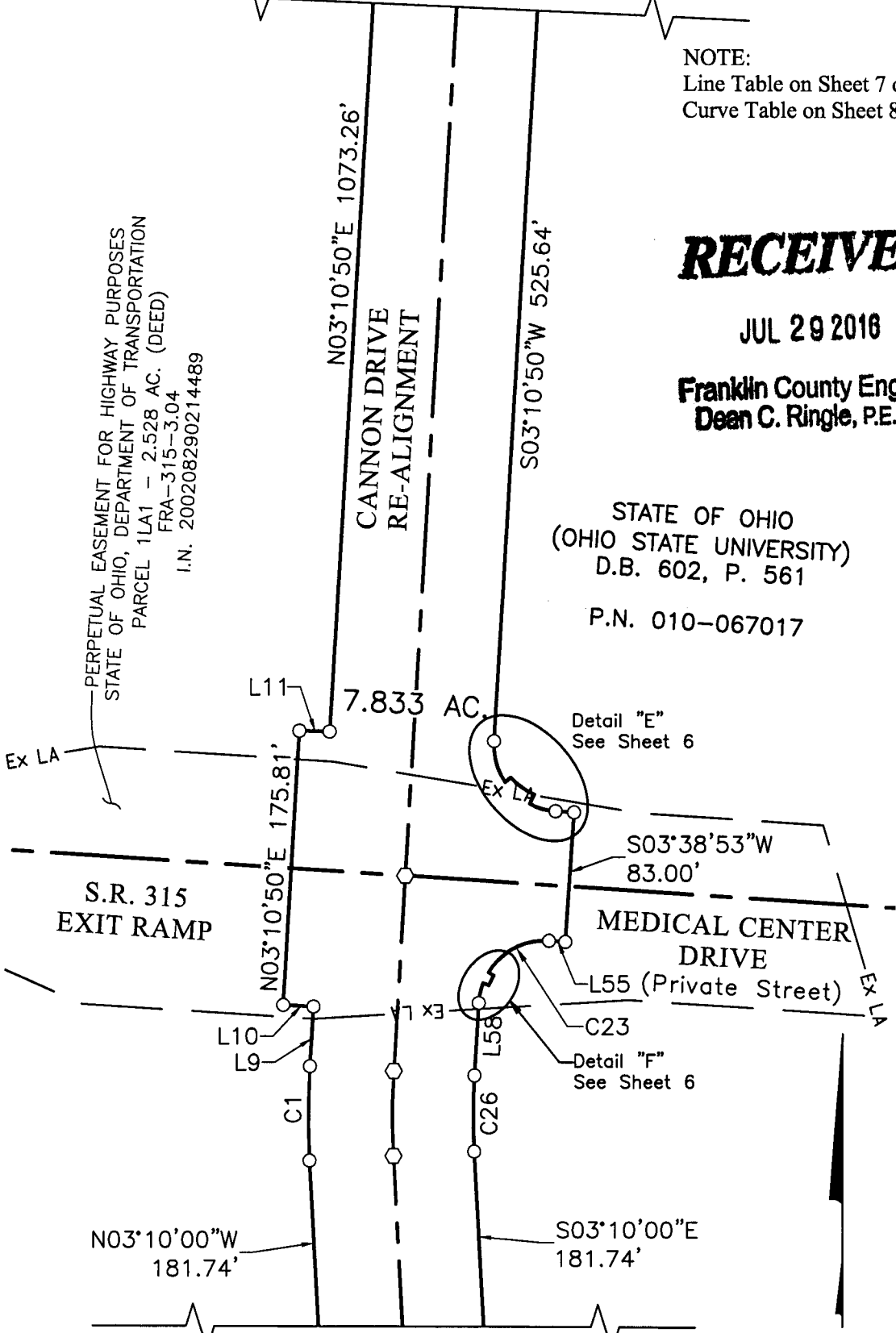
RECEIVED

JUL 29 2016

Franklin County Engineer
 Dean C. Ringle, P.E., P.S.

STATE OF OHIO
 (OHIO STATE UNIVERSITY)
 D.B. 602, P. 561
 P.N. 010-067017

PERPETUAL EASEMENT FOR HIGHWAY PURPOSES
 STATE OF OHIO, DEPARTMENT OF TRANSPORTATION
 PARCEL 1LA1 - 2.528 AC. (DEED)
 FRA-315-3.04
 I.N. 200208290214489



Detail "E"
 See Sheet 6

Detail "F"
 See Sheet 6

N03°10'00"W
 181.74'

S03°10'00"E
 181.74'

MATCH LINE SEE SHEET 2 OF 9

- = MAG NAIL SET
- = I.P. SET

I.P. Set are 13/16" I.D. iron pipes
 30" long with cap inscribed EMHT INC.



GRAPHIC SCALE (in feet)

J:\20150504\DWG\04SHEETS\EASEMENTS\20150504-VS-ESMT-RWAY-01.DWG plotted by GEIGER, STEVEN on 7/26/2016 1:31:41 PM last saved by SGEIGER on 7/26/2016 1:30:44 PM
 Xrefs: 20150504-CS-REFR-N.DWG & 20150504-VS-REFR-E.DWG & 20150504-CP-CNTR-N.DWG & 20150324-VS-BCRD-E.DWG



Evans, Mechwart, Hambleton & Tilton, Inc.
 Engineers • Surveyors • Planners • Scientists
 5500 New Albany Road, Columbus, OH 43054
 Phone: 614.775.4500 Toll Free: 888.775.3648
 emht.com

RIGHT-OF-WAY EASEMENT

QUARTER TOWNSHIP 3, TOWNSHIP 1, RANGE 18
 UNITED STATES MILITARY LANDS
 CITY OF COLUMBUS, COUNTY OF FRANKLIN, STATE OF OHIO

Date: July 22, 2016

Job No: 2015-0504

Scale: 1" = 100'

3A
9

MATCH LINE SEE SHEET 4A OF 9

NOTE:
 Line Table on Sheet 7 of 9.
 Curve Table on Sheet 8 of 9.
 Station and Offset Table on Sheet 9 of 9

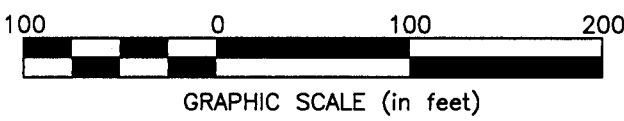
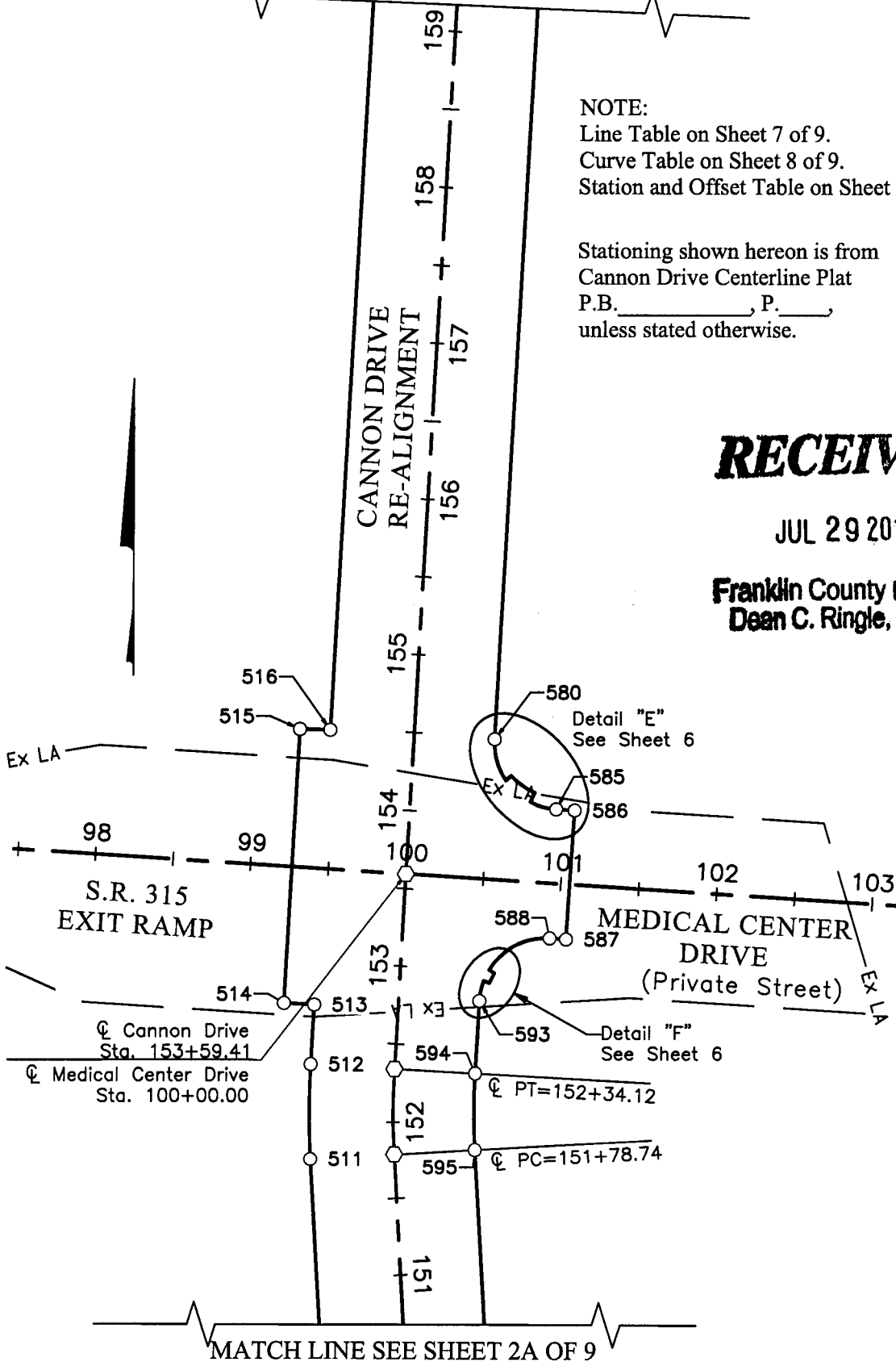
Stationing shown hereon is from
 Cannon Drive Centerline Plat
 P.B. _____, P. _____,
 unless stated otherwise.

RECEIVED

JUL 29 2016

Franklin County Engineer
 Dean C. Ringle, P.E., P.S.

J:\20150504\DWG\04SHEETS\EASEMENTS\20150504-VS-ESMT-RWAY-01.DWG plotted by GEIGER, STEVEN on 7/26/2016 1:31:43 PM last saved by SGEIGER on 7/26/2016 1:30:44 PM
 Xrefs: 20150504-CS-REFR-N.DWG & 20150504-CP-CNTR-N.DWG & 20150504-VS-REFR-E.DWG & 20150504-VS-BCRD-E.DWG



○ = MAG NAIL SET
 ○ = I.P. SET
 I.P. Set are 13/16" I.D. iron pipes
 30" long with cap inscribed EMHT INC.



Evans, Mechwart, Hambleton & Tilton, Inc.
 Engineers + Surveyors + Planners + Scientists
 5500 New Albany Road, Columbus, OH 43054
 Phone: 614.775.4500 Toll Free: 888.775.3648
 emht.com

RIGHT-OF-WAY EASEMENT

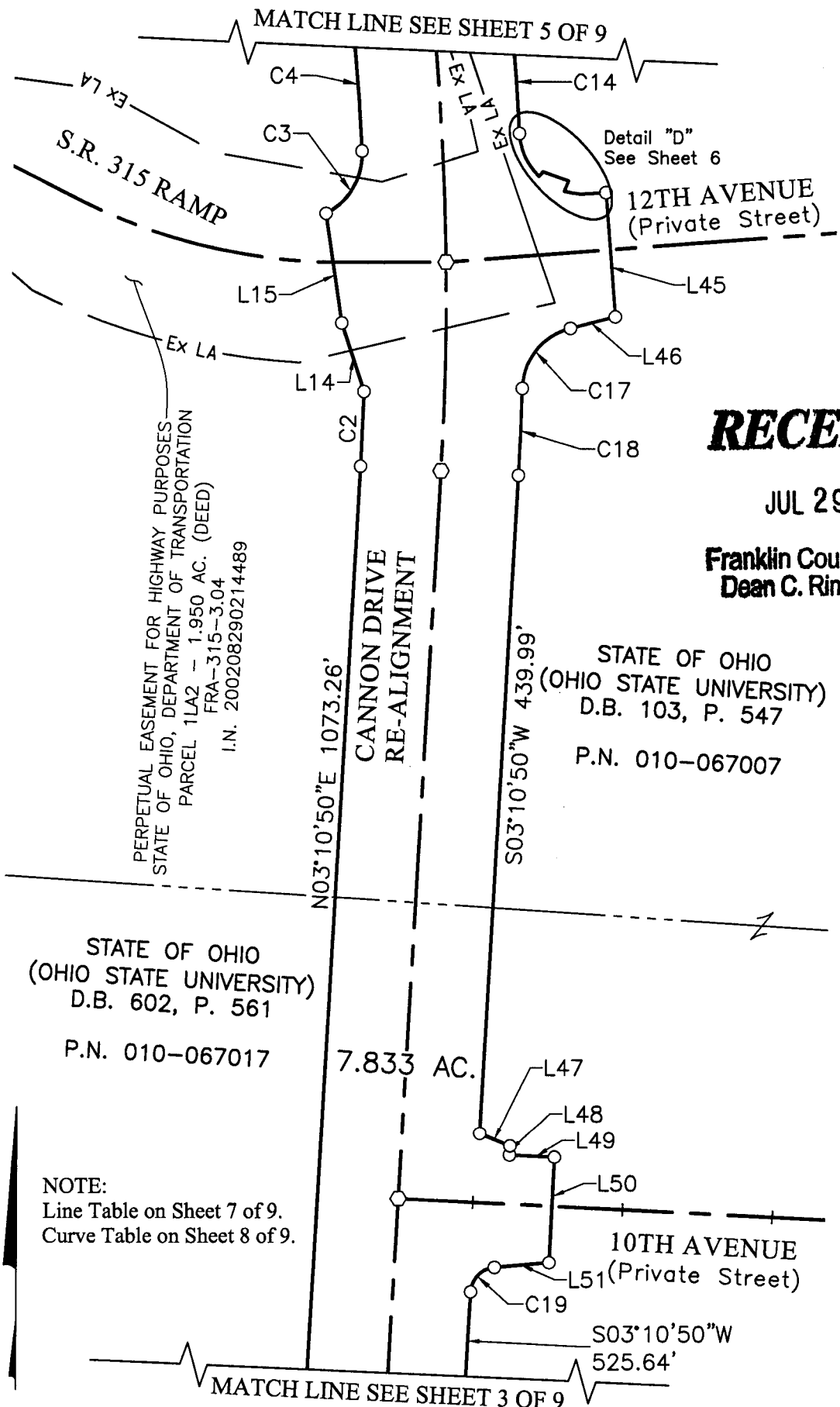
QUARTER TOWNSHIP 3, TOWNSHIP 1, RANGE 18
 UNITED STATES MILITARY LANDS
 CITY OF COLUMBUS, COUNTY OF FRANKLIN, STATE OF OHIO

Date: July 22, 2016

Job No: 2015-0504

Scale: 1" = 100'

4/9



RECEIVED
 JUL 29 2016
 Franklin County Engineer
 Dean C. Ringle, P.E., P.S.

J:\20150504\DWG\04SHEETS\EASEMENTS\20150504-VS-ESMT-RWAY-01.DWG plotted by GEIGER, STEVEN on 7/26/2016 1:31:44 PM last saved by SGEIGER on 7/26/2016 1:30:44 PM
 Xrefs: 20150504-CS-REFR-N.DWG & 20150504-VS-REFR-E.DWG & 20150504-CP-ONTR-N.DWG & 20150504-VS-BCRD-E.DWG

NOTE:
 Line Table on Sheet 7 of 9.
 Curve Table on Sheet 8 of 9.

- = MAG NAIL SET
- = I.P. SET

I.P. Set are 13/16" I.D. iron pipes
 30" long with cap inscribed EMHT INC.



GRAPHIC SCALE (in feet)



Evans, Mechwart, Hambleton & Tilton, Inc.
 Engineers • Surveyors • Planners • Scientists
 5500 New Albany Road, Columbus, OH 43054
 Phone: 614.775.4500 Toll Free: 888.775.3648
 emht.com

RIGHT-OF-WAY EASEMENT

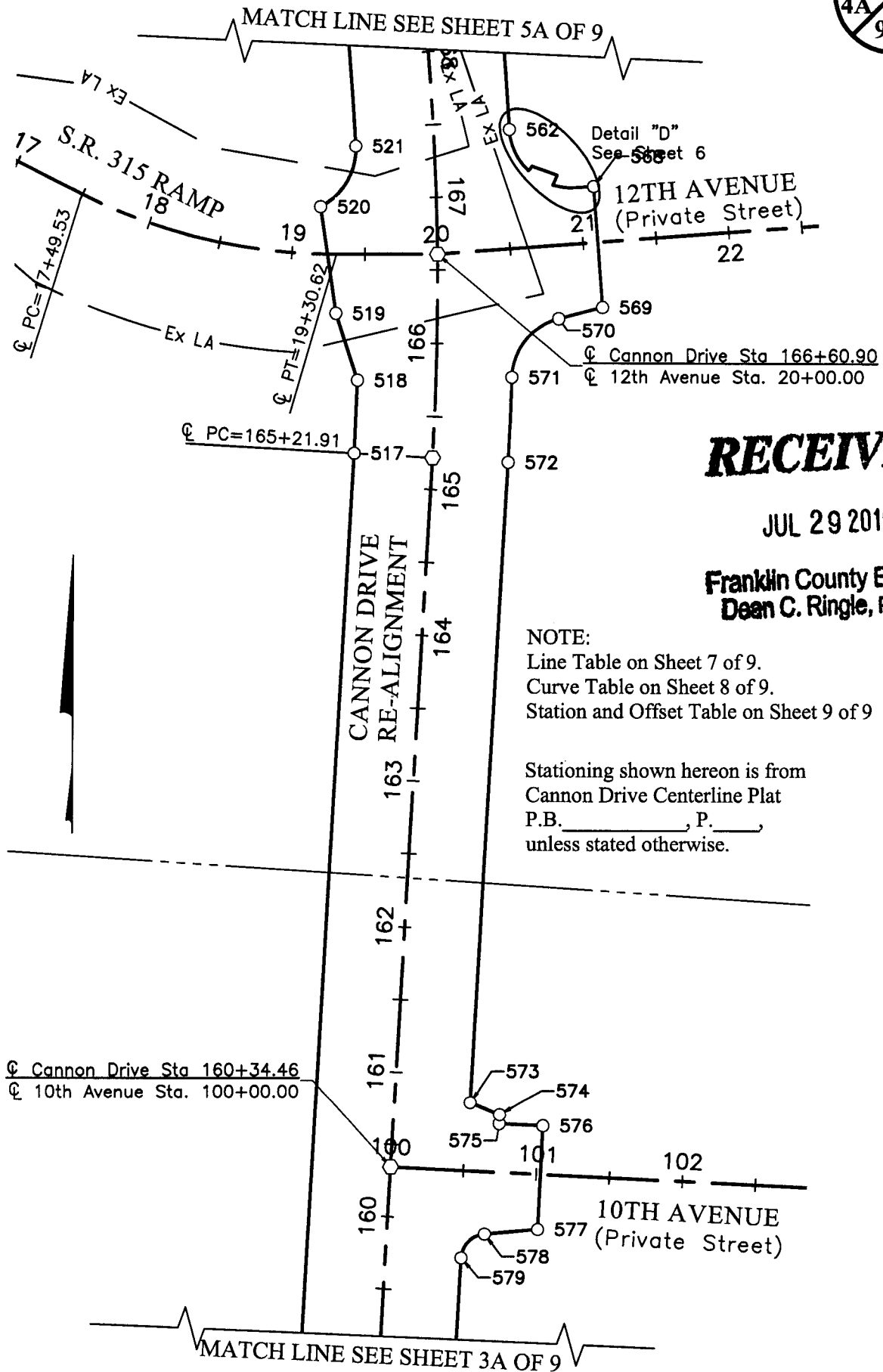
QUARTER TOWNSHIP 3, TOWNSHIP 1, RANGE 18
 UNITED STATES MILITARY LANDS
 CITY OF COLUMBUS, COUNTY OF FRANKLIN, STATE OF OHIO

Date: July 22, 2016

Job No: 2015-0504

Scale: 1" = 100'

J:\20150504\DWG\04SHEETS\EASEMENTS\20150504-VS-ESMT-RWAY-01.DWG plotted by GEIGER, STEVEN on 7/26/2016 1:31:45 PM last saved by SGEIGER on 7/26/2016 1:30:44 PM
 Xrefs: 20150504-CS-RETR-N.DWG & 20150504-VS-RETR-EDWG & 20150504-CP-CNTR-N.DWG & 20150324-VS-BCRD-EDWG



RECEIVED

JUL 29 2016

Franklin County Engineer
 Dean C. Ringle, PE., P.S.

NOTE:
 Line Table on Sheet 7 of 9.
 Curve Table on Sheet 8 of 9.
 Station and Offset Table on Sheet 9 of 9

Stationing shown hereon is from
 Cannon Drive Centerline Plat
 P.B. _____, P. _____
 unless stated otherwise.

- = MAG NAIL SET
- = I.P. SET

I.P. Set are 13/16" I.D. iron pipes
 30" long with cap inscribed EMHT INC.



GRAPHIC SCALE (in feet)



Evans, Mechwart, Hambleton & Tilton, Inc.
 Engineers + Surveyors + Planners + Scientists
 5500 New Albany Road, Columbus, OH 43054
 Phone: 614.775.4500 Toll Free: 888.775.3648
 emht.com

RIGHT-OF-WAY EASEMENT

QUARTER TOWNSHIP 3, TOWNSHIP 1, RANGE 18
 UNITED STATES MILITARY LANDS
 CITY OF COLUMBUS, COUNTY OF FRANKLIN, STATE OF OHIO

Date: July 22, 2016

Job No: 2015-0504

Scale: 1" = 100'

NOTE:
 Line Table on Sheet 7 of 9.
 Curve Table on Sheet 8 of 9.

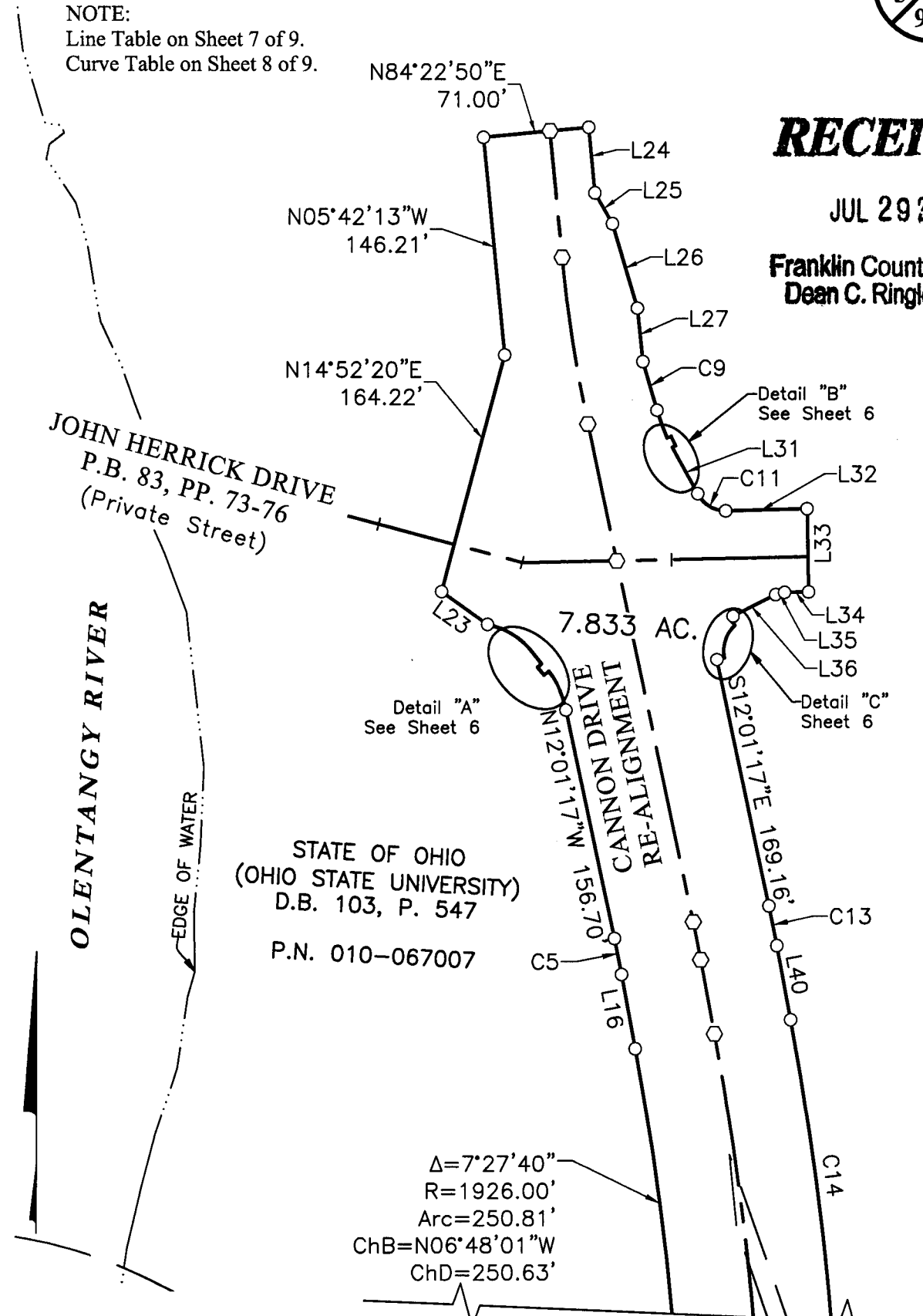
5/9

RECEIVED

JUL 29 2016

Franklin County Engineer
 Dean C. Ringle, P.E., P.S.

J:\20150504\DWG\04 SHEETS\EASEMENTS\20150504-VS-ESMT-RWAY-01.DWG plotted by GEIGER, STEVEN on 7/26/2016 1:31:47 PM last saved by SGEIGER on 7/26/2016 1:30:44 PM
 Xrefs: 20150504-CS-REFR-N.DWG & 20150504-VS-REFR-E.DWG & 20150504-CP-CNTR-N.DWG & 20150324-VS-BCRD-E.DWG



○ = MAG NAIL SET
 ○ = I.P. SET
 I.P. Set are 13/16" I.D. iron pipes
 30" long with cap inscribed EMHT INC.

100 0 100 200
 GRAPHIC SCALE (in feet)

MATCH LINE SEE SHEET 4 OF 9



Evans, Mechwart, Hombleton & Tilton, Inc.
 Engineers • Surveyors • Planners • Scientists
 5500 New Albany Road, Columbus, OH 43054
 Phone: 614.775.4500 Toll Free: 888.775.3648
 emht.com

RIGHT-OF-WAY EASEMENT

QUARTER TOWNSHIP 3, TOWNSHIP 1, RANGE 18
 UNITED STATES MILITARY LANDS
 CITY OF COLUMBUS, COUNTY OF FRANKLIN, STATE OF OHIO

Date: July 22, 2016

Job No: 2015-0504

Scale: 1" = 100'

Stationing shown hereon is from
 Cannon Drive Centerline Plat
 P.B. _____, P. _____
 unless stated otherwise.

NOTE:
 Line Table on Sheet 7 of 9.
 Curve Table on Sheet 8 of 9.
 Station and Offset Table on Sheet 9 of 9

5A
9

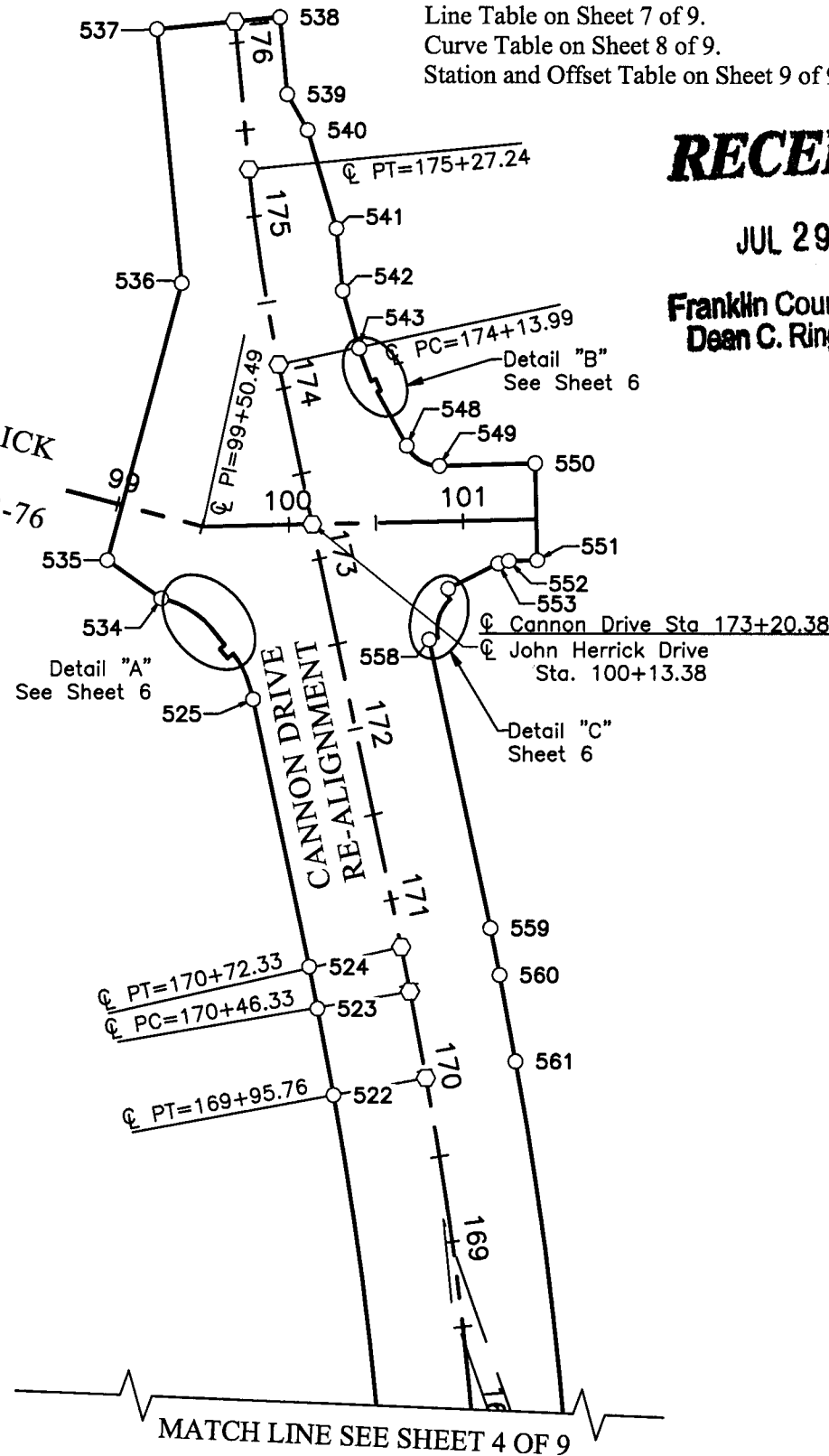
RECEIVED

JUL 29 2016

Franklin County Engineer
 Dean C. Ringle, P.E., P.S.

j:\20150504\DWG\04SHEETS\EASEMENTS\20150504-VS-ESMT-RWAY-01.DWG plotted by GEIGER, STEVEN on 7/26/2016 1:31:48 PM last saved by SGEIGER on 7/26/2016 1:30:44 PM
 Xrefs: 20150504-CS-REFR-N.DWG & 20150504-CP-CNTR-N.DWG & 20150504-VS-REFR-EDWG & 20150504-VS-REFR-EDWG & 20150504-VS-BCRD-EDWG

JOHN HERRICK DRIVE
 P.B. 83, PP. 73-76



○ = MAG NAIL SET
 ○ = I.P. SET
 I.P. Set are 13/16" I.D. iron pipes
 30" long with cap inscribed EMHT INC.

100 0 100 200
 GRAPHIC SCALE (in feet)

MATCH LINE SEE SHEET 4 OF 9



Evans, Mechwart, Hambleton & Tilton, Inc.
 Engineers • Surveyors • Planners • Scientists
 5500 New Albany Road, Columbus, OH 43034
 Phone: 614.775.4500 Toll Free: 888.775.3648
 emht.com

RIGHT-OF-WAY EASEMENT

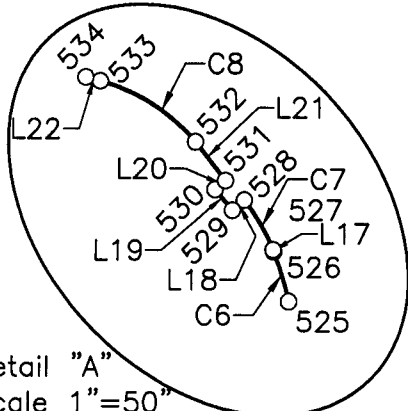
QUARTER TOWNSHIP 3, TOWNSHIP 1, RANGE 18
 UNITED STATES MILITARY LANDS
 CITY OF COLUMBUS, COUNTY OF FRANKLIN, STATE OF OHIO

Date: July 22, 2016

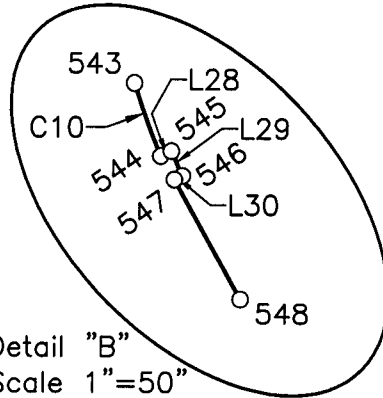
Job No: 2015-0504

Scale: 1" = 50'

6/9



Detail "A"
 Scale 1"=50"
 See Sheet 5 of 9

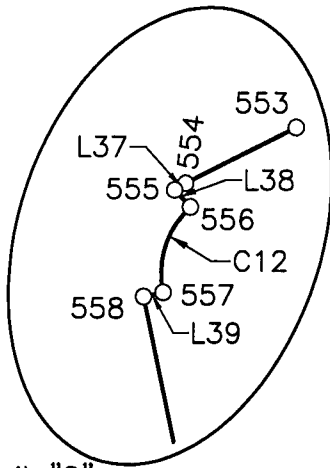


Detail "B"
 Scale 1"=50"
 See Sheet 5 of 9

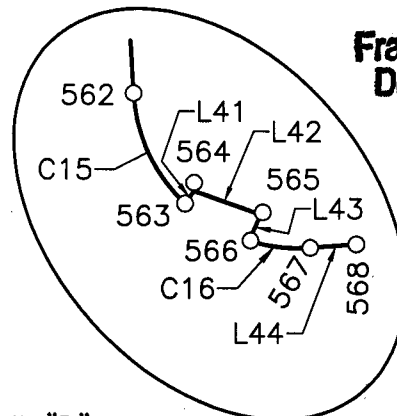
RECEIVED

JUL 29 2016

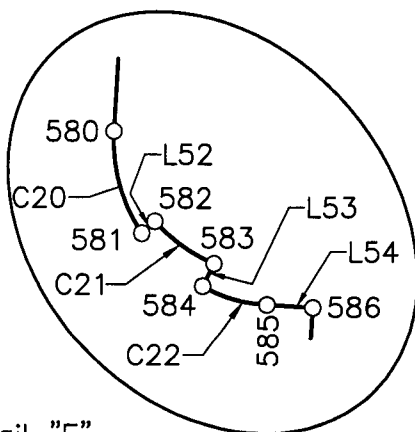
Franklin County Engineer
 Dean C. Ringle, P.E., P.S.



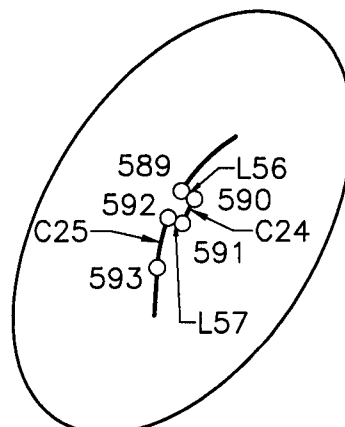
Detail "C"
 Scale 1"=50"
 See Sheet 5 of 9



Detail "D"
 Scale 1"=50"
 See Sheet 4 of 9



Detail "E"
 Scale 1"=50"
 See Sheet 3 of 9



Detail "F"
 Scale 1"=50"
 See Sheet 3 of 9

- = MAG NAIL SET
- = I.P. SET

I.P. Set are 13/16" I.D. iron pipes
 30" long with cap inscribed EMHT INC.



GRAPHIC SCALE (in feet)

NOTE:

- Line Table on Sheet 7 of 9.
- Curve Table on Sheet 8 of 9.
- Station and Offset Table on Sheet 9 of 9

Stationing shown hereon is from
 Cannon Drive Centerline Plat
 P.B. _____, P. _____
 unless stated otherwise.

J:\20150504\DWG\04SHEETS\EASEMENTS\20150504-VS-ESMT-RWAY-01.DWG plotted by GEIGER, STEVEN on 7/26/2016 1:31:51 PM last saved by SGEIGER on 7/26/2016 1:30:44 PM
 Xrefs: 20150504-CS-REFR-N.DWG & 20150504-VS-REFR-E.DWG & 20150504-CP-CNTR-N.DWG & 20150324-VS-BCRD-E.DWG



Evans, Mechwart, Hambleton & Tilton, Inc.
 Engineers + Surveyors + Planners + Scientists
 5500 New Albany Road, Columbus, OH 43054
 Phone: 614.775.4500 Toll Free: 888.775.3648
 emht.com

RIGHT-OF-WAY EASEMENT

QUARTER TOWNSHIP 3, TOWNSHIP 1, RANGE 18
 UNITED STATES MILITARY LANDS
 CITY OF COLUMBUS, COUNTY OF FRANKLIN, STATE OF OHIO

Date: July 22, 2016

Job No: 2015-0504

Scale: 1" = 100'

Line Table		
LINE	BEARING	DISTANCE
L1	N03°02'44"E	12.00'
L2	N03°02'44"E	13.00'
L3	S86°57'16"E	13.00'
L4	N03°02'44"E	58.55'
L5	S86°57'16"E	11.43'
L6	N03°02'44"E	12.72'
L7	N89°28'00"W	1.45'
L8	N03°07'13"E	17.86'
L9	N03°10'50"E	38.25'
L10	N86°49'10"W	19.42'
L11	S88°32'20"E	19.43'
L14	N18°19'10"W	47.96'
L15	N08°22'03"W	73.95'
L16	N10°31'53"W	50.59'
L17	N21°36'42"W	0.51'
L18	S49°42'17"W	4.01'
L19	N40°17'43"W	7.00'
L20	N49°42'17"E	3.53'
L21	N38°11'03"W	12.69'
L22	N75°07'40"W	3.91'
L23	N54°25'32"W	38.01'
L24	S05°29'53"E	44.17'
L25	S29°56'27"E	23.63'
L26	S16°29'36"E	58.90'
L27	S05°55'32"E	35.97'
L28	N65°14'03"E	3.00'
L29	S24°18'11"E	7.00'
L30	S65°14'03"W	2.29'
L31	S29°00'51"E	35.25'
L32	N88°23'04"E	54.68'
L33	S01°16'50"E	55.74'
L34	S88°42'40"W	16.18'
L35	S75°53'04"W	6.22'
L36	S63°03'29"W	32.01'
L37	S58°47'51"W	3.35'

Line Table		
LINE	BEARING	DISTANCE
L38	S42°51'14"E	6.02'
L39	S77°58'43"W	5.18'
L40	S10°31'53"E	50.56'
L41	N39°53'38"E	3.96'
L42	S70°38'12"E	18.14'
L43	S23°16'19"W	7.39'
L44	N85°31'03"E	11.99'
L45	S04°28'57"E	83.34'
L46	S75°31'04"W	30.81'
L47	S67°18'03"E	21.93'
L48	S02°48'48"W	6.16'
L49	S87°12'06"E	29.98'
L50	S02°47'54"W	71.75'
L51	S84°53'13"W	36.57'
L52	N47°57'27"E	4.56'
L53	S26°51'05"W	6.51'
L54	S86°21'07"E	11.90'
L55	N86°21'07"W	10.53'
L56	S58°35'40"E	4.00'
L57	N69°00'43"W	4.00'
L58	S03°10'50"W	46.51'
L59	S03°02'44"W	29.48'
L60	S86°48'41"E	12.00'
L61	S03°02'44"W	59.55'
L62	S86°57'16"E	13.00'
L63	S03°02'44"W	3.00'
L64	N03°10'50"E	14.72'
L65	S86°49'10"E	17.00'
L66	N03°10'50"E	11.43'
L67	S03°10'50"W	0.91'
L68	S29°32'53"E	39.18'
L69	S70°46'24"E	50.16'
L70	S86°57'16"E	107.67'
L71	N03°02'44"E	30.00'

LINE NUMBERS L12 AND L13 ARE NOT USED.

7/9

RECEIVED

JUL 29 2016

Franklin County Engineer
 Dean C. Ringle, P.E., P.S.



Evans, Mechwart, Hambleton & Tilton, Inc.
 Engineers • Surveyors • Planners • Scientists
 5500 New Albany Road, Columbus, OH 43054
 Phone: 614.773.4500 Toll Free: 888.773.3648
 emht.com

RIGHT-OF-WAY EASEMENT
 QUARTER TOWNSHIP 3, TOWNSHIP 1, RANGE 18
 UNITED STATES MILITARY LANDS
 CITY OF COLUMBUS, COUNTY OF FRANKLIN, STATE OF OHIO

Date: July 22, 2016

Job No: 2015-0504

Scale: 1" = 100'

8
9

Curve Table					
Curve Number	Delta	Radius	Length	Chord Bearing	Chord Distance
C1	6°20'49"	554.00'	61.37'	N00°00'25"E	61.34'
C2	1°28'49"	1923.50'	49.70'	N02°26'25"E	49.69'
C3	66°00'25"	44.00'	50.69'	N29°56'02"E	47.93'
C4	7°27'40"	1926.00'	250.81'	N06°48'01"W	250.63'
C5	1°29'24"	946.00'	24.60'	N11°16'35"W	24.60'
C6	9°35'25"	80.50'	13.47'	N16°49'00"W	13.46'
C7	17°24'57"	49.00'	14.89'	N30°19'11"W	14.84'
C8	34°44'12"	49.00'	29.71'	N57°45'34"W	29.25'
C9	1°37'34"	1206.76'	34.25'	S16°06'30"E	34.25'
C10	6°17'25"	182.50'	20.04'	S20°04'00"E	20.03'
C11	65°24'40"	20.39'	23.27'	S58°22'11"E	22.03'
C12	59°10'03"	23.50'	24.27'	S17°33'45"W	23.20'
C13	1°29'24"	1052.00'	27.36'	S11°16'35"E	27.35'
C14	7°17'06"	2032.00'	258.36'	S06°53'21"E	258.19'
C15	43°20'05"	42.44'	32.10'	S24°54'20"E	31.34'
C16	21°27'52"	42.76'	16.02'	S83°35'54"E	15.92'
C17	73°58'27"	42.50'	54.87'	S38°31'51"W	51.14'
C18	1°38'12"	2032.00'	58.05'	S02°21'43"W	58.05'
C19	81°42'24"	17.50'	24.96'	S44°02'01"W	22.89'
C20	37°26'13"	42.50'	27.77'	S15°32'17"E	27.28'
C21	25°00'25"	43.50'	18.99'	S54°32'45"E	18.84'
C22	28°37'42"	35.02'	17.50'	S73°52'20"E	17.32'
C23	62°14'33"	42.50'	46.17'	S62°31'37"W	43.93'
C24	10°25'03"	38.50'	7.00'	S26°11'49"W	6.99'
C25	17°48'28"	42.50'	13.21'	S12°05'03"W	13.16'
C26	6°20'49"	448.00'	49.63'	S00°00'25"W	49.60'

RECEIVED

JUL 29 2016

Franklin County Engineer
 Dean C. Ringle, P.E., P.S.



Evans, Mechwart, Hambleton & Tilton, Inc.
 Engineers • Surveyors • Planners • Scientists
 5500 New Albany Road, Columbus, OH 43054
 Phone: 614.775.4500 Toll Free: 888.775.3648
 emht.com

RIGHT-OF-WAY EASEMENT

QUARTER TOWNSHIP 3, TOWNSHIP 1, RANGE 18

UNITED STATES MILITARY LANDS

CITY OF COLUMBUS, COUNTY OF FRANKLIN, STATE OF OHIO

Date: July 22, 2016

Job No: 2015-0504

Scale: 1" = 100'

Stationing shown hereon is from
 Cannon Drive Centerline Plat
 P.B. _____, P. _____,
 unless stated otherwise.

9
9

STATIONS AND OFFSETS

NUMBER	STATION	OFFSET
500	148+28.72	312.66' Lt.
501	148+40.72	312.66' Lt.
502	148+40.72	77.00' Lt.
503	148+53.72	77.00' Lt.
504	148+53.72	64.00' Lt.
505	149+12.27	64.00' Lt.
506	149+12.27	52.57' Lt.
507	149+24.99	52.57' Lt.
508	149+24.92	54.02' Lt.
509	149+42.79	54.00' Lt.
510	149+97.00	54.00' Lt.
511	151+78.74	54.00' Lt.
512	152+34.12	54.00' Lt.
513	152+72.38	54.00' Lt.
514	152+72.38	73.42' Lt.
515	154+48.19	73.42' Lt.
516	154+48.77	54.00' Lt.
517	165+22.03	54.00' Lt.
518	165+73.12	54.00' Lt.
519	166+19.83	69.87' Lt.
520	166+96.01	79.68' Lt.
521	167+37.90	54.00' Lt.
522	169+95.74	54.00' Lt.
523	170+46.33	54.00' Lt.
524	170+72.33	54.00' Lt.
525	172+29.03	54.00' Lt.
526	172+42.44	55.13' Lt.
527	172+42.94	55.21' Lt.
528	172+57.03	59.87' Lt.
529	172+55.13	63.40' Lt.
530	172+61.29	66.72' Lt.
531	172+62.96	63.61' Lt.
532	172+74.36	69.21' Lt.
533	172+94.77	90.16' Lt.
534	172+96.54	93.64' Lt.
535	173+24.61	119.27' Lt.
536	174+68.59	46.53' Lt.
537	176+12.14	44.97' Lt.
538	176+12.14	26.03' Rt.
539	175+67.97	25.94' Rt.
540	175+46.44	35.67' Rt.
541	174+86.75	46.01' Rt.
542	174+49.16	44.10' Rt.
543	174+13.46	47.12' Rt.
544	173+93.63	49.93' Rt.
545	173+94.30	52.85' Rt.
546	173+87.46	54.34' Rt.
547	173+86.95	52.11' Rt.
548	173+53.24	62.41' Rt.
549	173+38.03	78.35' Rt.
550	173+28.16	132.13' Rt.
551	172+73.39	121.74' Rt.
552	172+76.40	105.85' Rt.
553	172+76.18	99.64' Rt.
554	172+67.94	68.71' Rt.
555	172+66.84	65.55' Rt.

NUMBER	STATION	OFFSET
556	172+61.66	68.63' Rt.
557	172+41.49	57.18' Rt.
558	172+41.49	52.00' Rt.
559	170+71.72	52.00' Rt.
560	170+46.94	52.00' Rt.
561	169+95.76	52.00' Rt.
562	167+44.01	52.00' Rt.
563	167+15.80	63.77' Rt.
564	167+18.63	66.45' Rt.
565	167+12.15	83.29' Rt.
566	167+05.74	80.10' Rt.
567	167+03.48	95.85' Rt.
568	167+03.96	107.83' Rt.
569	166+25.17	112.97' Rt.
570	166+17.68	83.17' Rt.
571	165+78.47	52.00' Rt.
572	165+21.91	52.00' Rt.
573	160+81.92	52.00' Rt.
574	160+74.59	72.67' Rt.
575	160+68.43	72.71' Rt.
576	160+68.63	102.69' Rt.
577	159+96.88	103.17' Rt.
578	159+91.60	66.98' Rt.
579	159+74.29	52.00' Rt.
580	154+48.64	52.00' Rt.
581	154+22.81	60.75' Rt.
582	154+26.04	63.97' Rt.
583	154+15.99	79.89' Rt.
584	154+10.02	77.28' Rt.
585	154+06.14	94.15' Rt.
586	154+06.05	106.05' Rt.
587	153+23.05	105.38' Rt.
588	153+23.14	94.85' Rt.
589	153+00.74	57.05' Rt.
590	152+98.84	60.58' Rt.
591	152+92.41	57.85' Rt.
592	152+93.63	54.04' Rt.
593	152+80.64	52.00' Rt.
594	152+34.12	52.00' Rt.
595	151+78.74	52.00' Rt.
596	149+97.00	52.00' Rt.
597	149+42.79	52.00' Rt.
598	149+13.30	52.00' Rt.
599	149+13.27	64.00' Rt.
600	148+53.72	64.00' Rt.
601	148+53.72	77.00' Rt.
602	148+50.72	77.00' Rt.
603	148+50.72	356.88' Rt.
604	148+65.44	356.91' Rt.
605	148+65.40	373.91' Rt.
606	148+76.83	373.94' Rt.
607	148+76.62	463.94' Rt.
608	148+75.71	463.93' Rt.
609	148+42.70	485.04' Rt.
610	148+28.72	533.21' Rt.

RECEIVED

JUL 29 2016

Franklin County Engineer
 Dean C. Ringle, P.E., P.S.