



Evans, Mechwart, Hambleton & Tilton, Inc.
 Engineers • Surveyors • Planners • Scientists
 5500 New Albany Road, Columbus, OH 43054
 Phone: 614.775.4500 Toll Free: 888.775.3648
 emht.com

LIMITED ACCESS RIGHT-OF-WAY EASEMENT

QUARTER TOWNSHIP 3, TOWNSHIP 1, RANGE 18

UNITED STATES MILITARY LANDS

CITY OF COLUMBUS, COUNTY OF FRANKLIN, STATE OF OHIO

Date: June 27, 2016

Scale: 1" = 100'

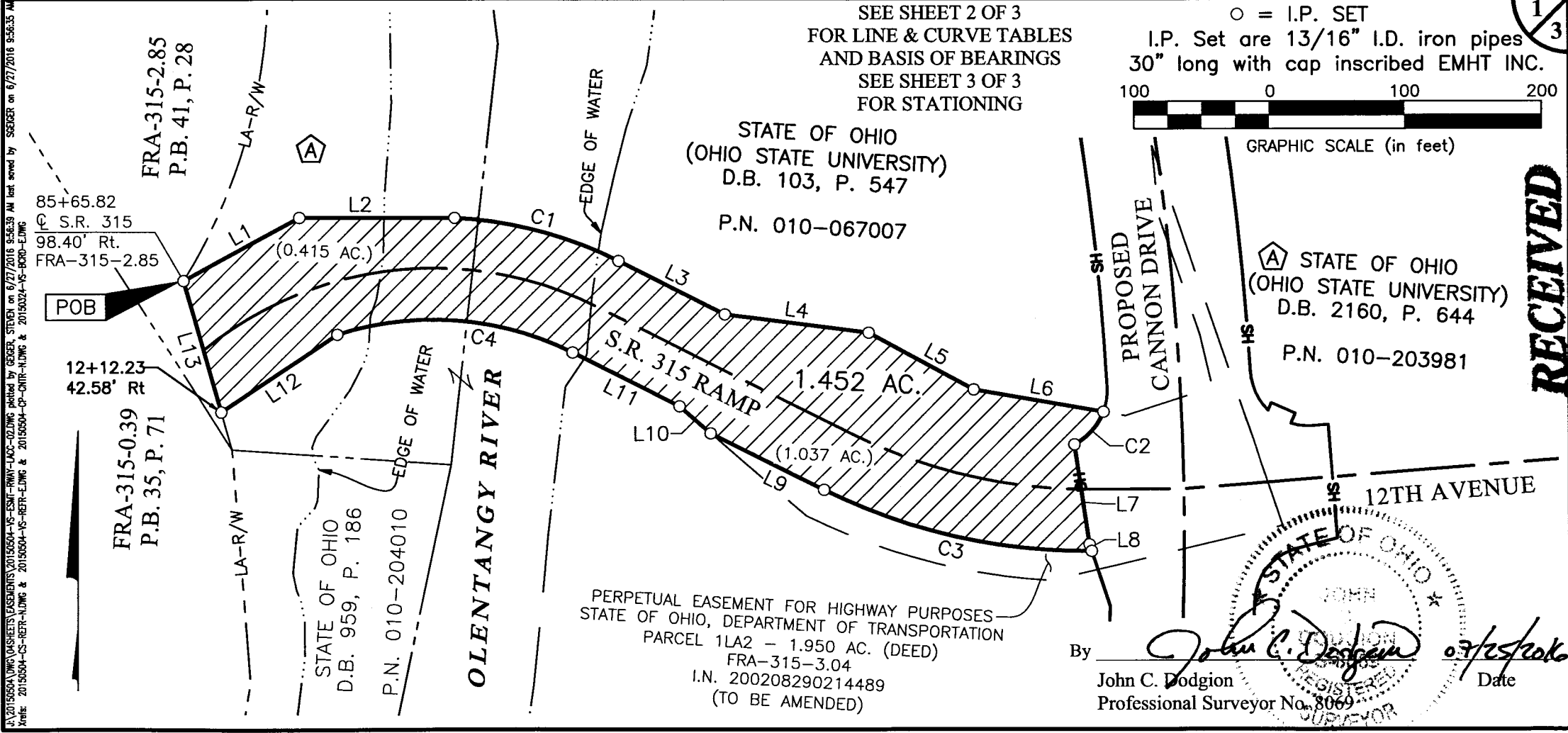
Job No: 2015-0504

SEE SHEET 2 OF 3
 FOR LINE & CURVE TABLES
 AND BASIS OF BEARINGS
 SEE SHEET 3 OF 3
 FOR STATIONING

○ = I.P. SET
 I.P. Set are 13/16" I.D. iron pipes
 30" long with cap inscribed EMHT INC.

GRAPHIC SCALE (in feet)

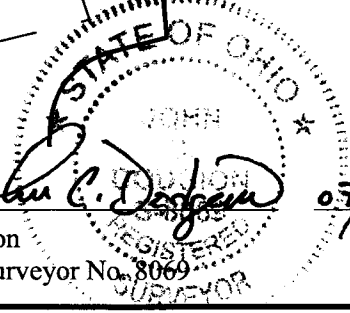
1
3



J:\20150504\DWG\ASHEETS\ASHEETS\20150504-VS-ESMT-RWAV-LACC-02.DWG plotted by GEBER, STEVEN on 6/27/2016 5:56:39 AM last saved by SKEICER on 6/27/2016 5:56:35 AM
 Xrefs: 20150504-CS-RERR-NLWNG & 20150504-VS-RERR-EDWG & 20150504-CP-CMTR-NLWNG & 20150324-VS-BORD-EDWG

PERPETUAL EASEMENT FOR HIGHWAY PURPOSES
 STATE OF OHIO, DEPARTMENT OF TRANSPORTATION
 PARCEL 11A2 - 1.950 AC. (DEED)
 FRA-315-3.04
 I.N. 200208290214489
 (TO BE AMENDED)

By John C. Dodgion 07/25/2016
 John C. Dodgion
 Professional Surveyor No. 8069
 Date



RECEIVED

JUL 25 2016
 Franklin County Engineer
 Dean C. Ringle, P.E., P.S.



Evans, Mechwart, Hambleton & Tilton, Inc.
 Engineers • Surveyors • Planners • Scientists
 5500 New Albany Road, Columbus, OH 43054
 Phone: 614.775.4500 Toll Free: 888.775.3648
 emht.com

LIMITED ACCESS RIGHT-OF-WAY EASEMENT

QUARTER TOWNSHIP 3, TOWNSHIP 1, RANGE 18

UNITED STATES MILITARY LANDS

CITY OF COLUMBUS, COUNTY OF FRANKLIN, STATE OF OHIO

Date: June 27, 2016

Scale: 1" = 100'

Job No: 2015-0504

SEE SHEET 1 OF 3
 FOR EASEMENT BOUNDARY
 SEE SHEET 3 OF 3
 FOR STATIONING

2
3

Curve Table

Curve Number	Delta	Radius	Length	Chord Bearing	Chord Distance
C1	23°33'55"	302.84'	124.56'	S75°10'05"E	123.68'
C2	42°31'13"	44.00'	32.65'	S41°40'38"W	31.91'
C3	27°10'39"	428.00'	203.02'	N77°03'59"W	201.12'
C4	44°33'52"	227.84'	177.21'	N85°40'05"W	172.78'

Line Table

LINE	BEARING	DISTANCE
L1	N61°27'42"E	96.67'
L2	N89°58'43"E	114.07'
L3	S63°23'08"E	87.79'
L4	S82°40'32"E	105.95'
L5	S61°38'57"E	87.85'
L6	S80°13'43"E	96.14'
L7	S08°22'03"E	73.95'

Line Table

LINE	BEARING	DISTANCE
L8	S18°19'10"E	5.10'
L9	N63°28'39"W	92.55'
L10	N49°13'38"W	30.33'
L11	N63°23'08"W	87.79'
L12	S56°15'20"W	102.19'
L13	N16°04'54"W	100.29'

BASIS OF BEARINGS:

The bearings shown on these plans were transferred from a field traverse originating from and tying to Franklin County Survey Control Monuments, including MORLAN and TACKETT, and is based on the Ohio State Plane Coordinate System, South Zone as per NAD 83. The portion of the centerline of King Avenue, having a bearing of S86°57'16"E, is designated the "basis of bearing" for this plat.

RECEIVED

JUL 25 2016

Franklin County Engineer
 Dean C. Ringe, P.E., P.S.

J:\20150504\DWG\04SHEETS\EASEMENTS\20150504-VS-ESMT-RWAY-LACC-02.DWG plotted by GDBER, STEVEN on 6/27/2016 9:57:03 AM last saved by SBECKER on 6/27/2016 9:56:35 AM
 Xrefs: 20150504-VS-REFR-HUDWG & 20150504-VS-REFR-EUDWG & 20150504-CP-CNTR-HUDWG & 20150324-VS-BGRD-EDWG



Evans, Mechwart, Hambleton & Tilton, Inc.
 Engineers • Surveyors • Planners • Scientists
 5500 New Albany Road, Columbus, OH 43054
 Phone: 614.775.4500 Toll Free: 888.775.3648

emht.com

LIMITED ACCESS RIGHT-OF-WAY EASEMENT

QUARTER TOWNSHIP 3, TOWNSHIP 1, RANGE 18

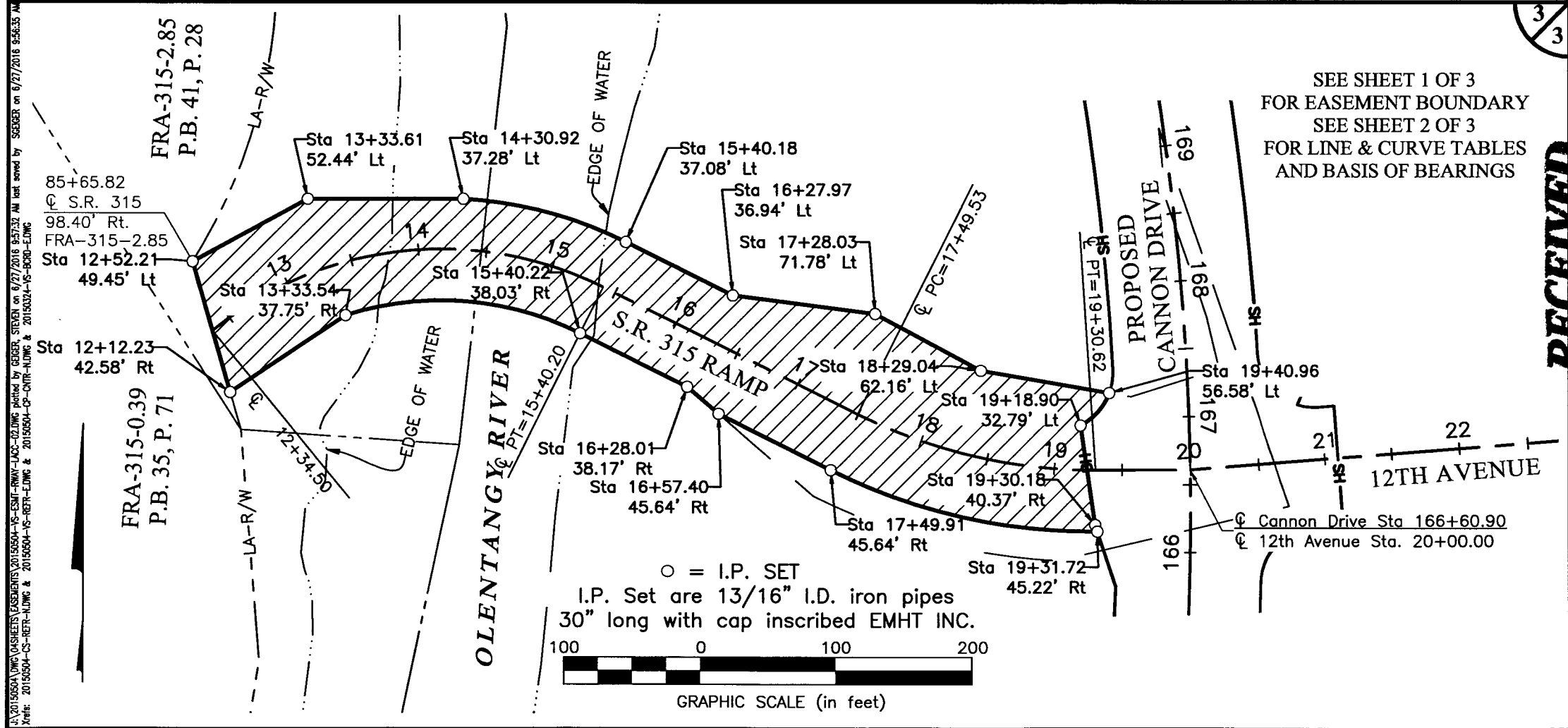
UNITED STATES MILITARY LANDS

CITY OF COLUMBUS, COUNTY OF FRANKLIN, STATE OF OHIO

Date: June 27, 2016

Scale: 1" = 100'

Job No: 2015-0504



J:\20150504\DWG\CASHEETS\EASEMENTS\20150504-VS-ESMT-RWAY-LACS-02.DWG plotted by GEBER, STEVEN on 6/27/2016 9:57:32 AM last saved by SEGBER on 6/27/2016 9:56:35 AM
 Xrefs: 20150504-CS-BETR-ADWG & 20150504-CS-BETR-ADWG & 20150504-CS-CONTR-ADWG & 20150504-VS-BORD-EDWG

RECEIVED

JUL 25 2016

Franklin County Engineer
 Dean C. Ringle, P.E., P.S.