

JUL 11 2016

Franklin County Engineer  
Dean C. Ringle, P.E., P.S.



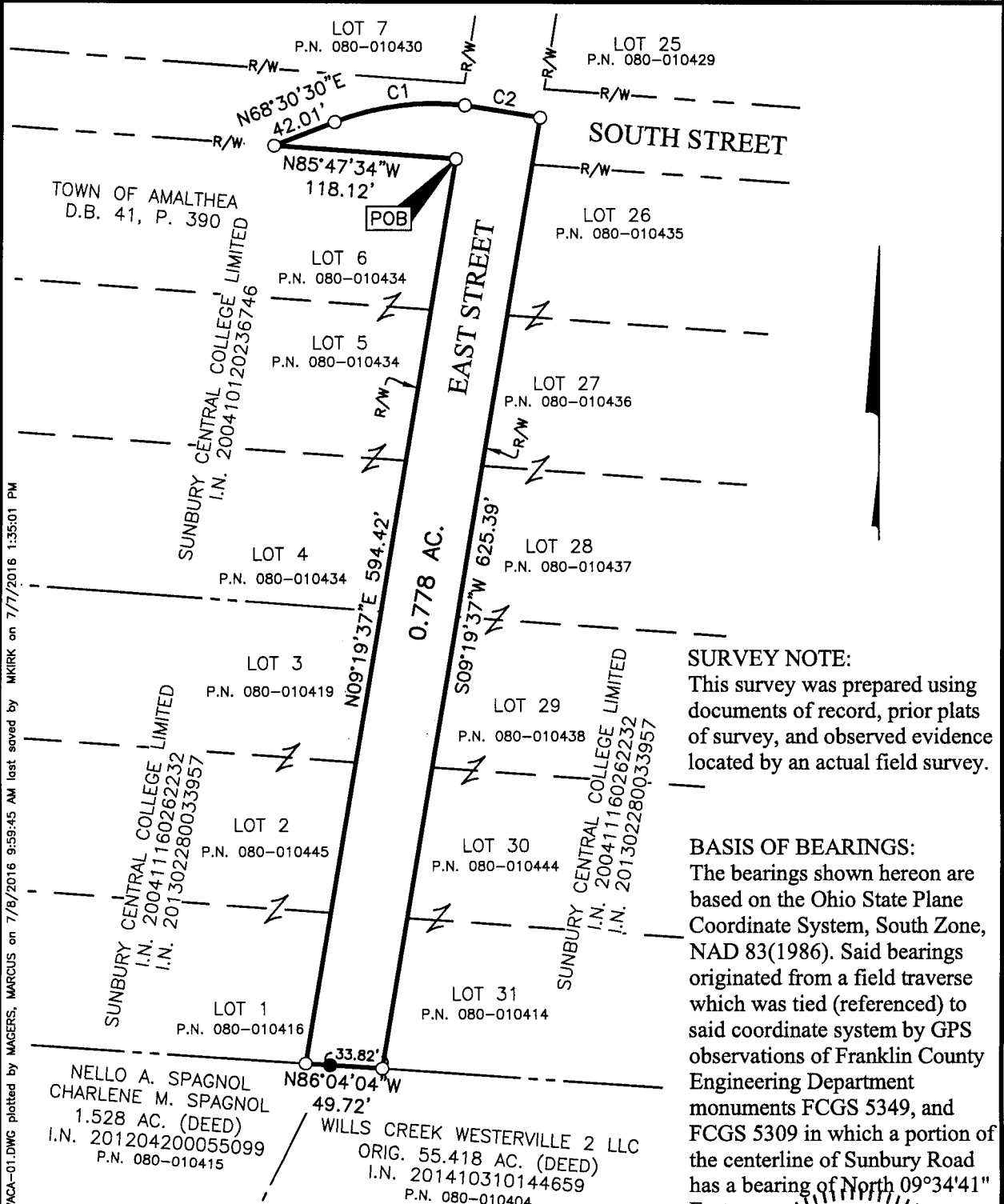
Evans, Mechwart, Hambleton & Tilton, Inc.  
Engineers • Surveyors • Planners • Scientists  
5500 New Albany Road, Columbus, OH 43054  
Phone: 614.775.4500 Toll Free: 888.775.3648  
emht.com

**RIGHT OF WAY VACATION I-4-C-F**  
QUARTER TOWNSHIP 1, TOWNSHIP 2, RANGE 17  
UNITE STATES MILITARY LANDS  
CITY OF WESTERVILLE, COUNTY OF FRANKLIN, STATE OF OHIO

Date: July 8, 2016

Job No. 2012-1214

Scale: 1" = 100'



**SURVEY NOTE:**  
This survey was prepared using documents of record, prior plats of survey, and observed evidence located by an actual field survey.

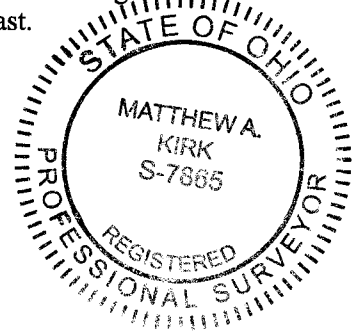
**BASIS OF BEARINGS:**  
The bearings shown hereon are based on the Ohio State Plane Coordinate System, South Zone, NAD 83(1986). Said bearings originated from a field traverse which was tied (referenced) to said coordinate system by GPS observations of Franklin County Engineering Department monuments FCGS 5349, and FCGS 5309 in which a portion of the centerline of Sunbury Road has a bearing of North 09°34'41" East.

CURVE TABLE					
CURVE	DELTA	RADIUS	ARC	CH. BEARING	CH. DIST.
C1	28°10'12"	175.00'	86.04'	N82°35'36"E	85.18'
C2	0°56'17"	3023.04'	49.50'	S80°49'46"E	49.50'

● = 3/4" I.P. FND.  
○ = I.P. SET  
I.P. Set are 13/16" I.D. iron pipes  
30" long with cap inscribed EMHT INC.



GRAPHIC SCALE (in feet)



By Matthew A. Kirk Date 8 July 16  
Matthew A. Kirk Professional Surveyor No. 7865

J:\2012\1214\DWG\04SHEETS\BOUNDARY\20121214-VS-BNDY-VACA-01.DWG plotted by MARGERS, MARCUS on 7/8/2016 9:58:45 AM last saved by MKIRK on 7/7/2016 1:35:01 PM Xref:.