



Evans, Mechwart, Hambleton & Tilton, Inc.  
 Engineers • Surveyors • Planners • Scientists  
 5500 New Albany Road, Columbus, OH 43054  
 Phone: 614.775.4500 Toll Free: 888.775.3648  
 emht.com

# SURVEY OF ACREAGE PARCELS

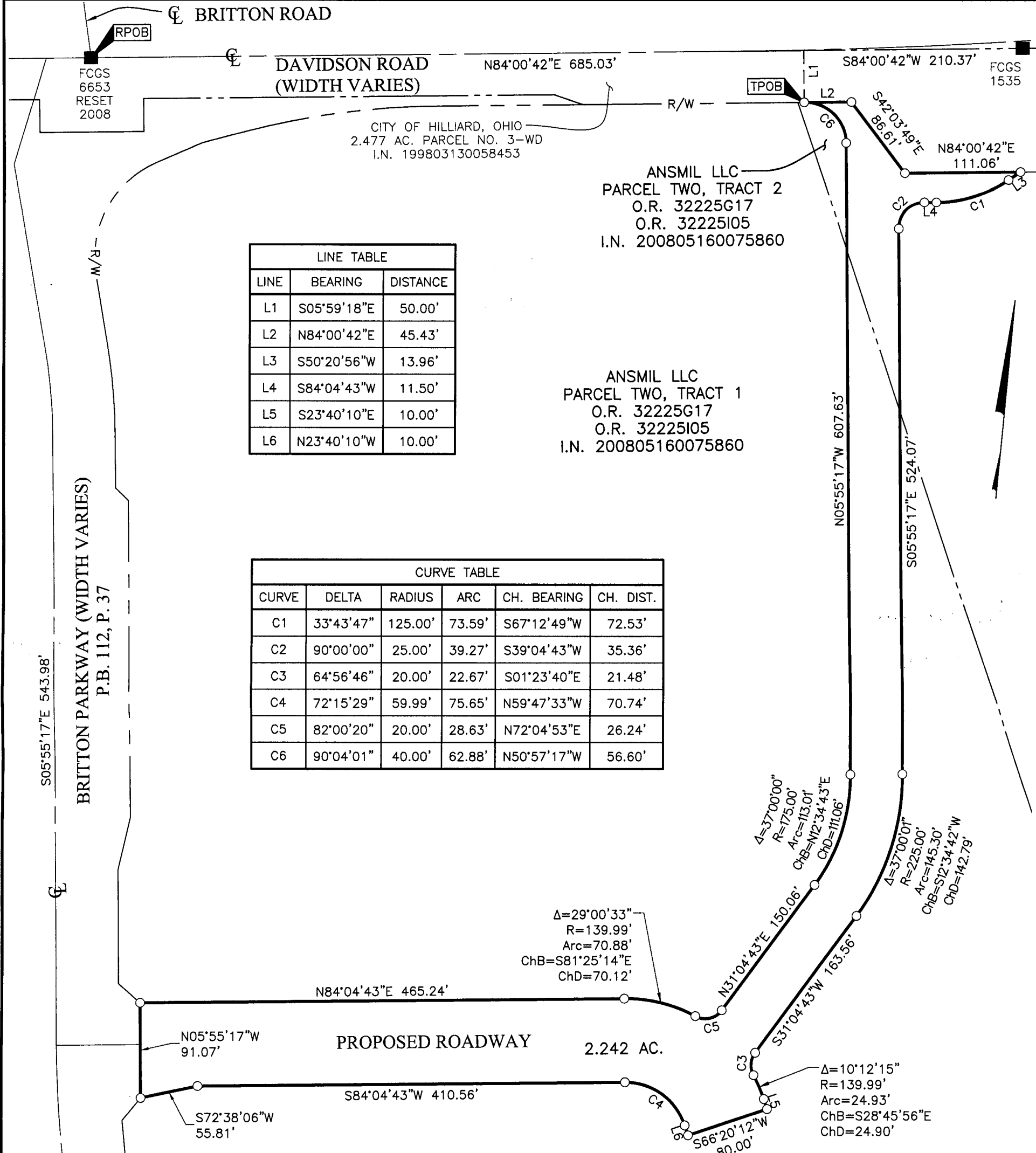
## VIRGINIA MILITARY SURVEY NO. 4854

### CITY OF HILLIARD, COUNTY OF FRANKLIN, STATE OF OHIO

Date: June 20, 2016

Job No: 2015-1683

Scale: 1" = 100'



LINE TABLE		
LINE	BEARING	DISTANCE
L1	S05°59'18"E	50.00'
L2	N84°00'42"E	45.43'
L3	S50°20'56"W	13.96'
L4	S84°04'43"W	11.50'
L5	S23°40'10"E	10.00'
L6	N23°40'10"W	10.00'

CURVE TABLE					
CURVE	DELTA	RADIUS	ARC	CH. BEARING	CH. DIST.
C1	33°43'47"	125.00'	73.59'	S67°12'49"W	72.53'
C2	90°00'00"	25.00'	39.27'	S39°04'43"W	35.36'
C3	64°56'46"	20.00'	22.67'	S01°23'40"E	21.48'
C4	72°15'29"	59.99'	75.65'	N59°47'33"W	70.74'
C5	82°00'20"	20.00'	28.63'	N72°04'53"E	26.24'
C6	90°04'01"	40.00'	62.88'	N50°57'17"W	56.60'

ANSMIL LLC  
 PARCEL TWO, TRACT 2  
 O.R. 32225G17  
 O.R. 32225I05  
 I.N. 200805160075860

ANSMIL LLC  
 PARCEL TWO, TRACT 1  
 O.R. 32225G17  
 O.R. 32225I05  
 I.N. 200805160075860

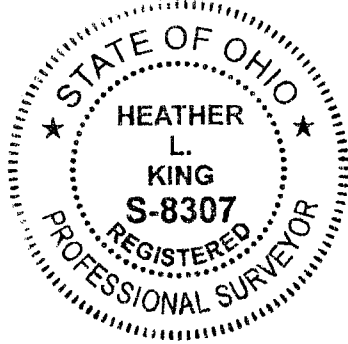
**BASIS OF BEARINGS:**  
 Bearings are based on the Ohio State Plane Coordinate System, South Zone, as per NAD83 (1986 Adjustment). Control for bearings was from coordinates of monuments FCGS 0005 RESET and FCGS 0006, having a bearing of North 23° 37' 07" West, established by the Franklin County Engineering Department, using Global Positioning System procedures and equipment.

**SURVEY NOTE:**  
 This survey was prepared using documents of record, prior plats of survey, and observed evidence located by an actual field survey performed in November of 2006.

○ = I.P. SET  
 ⊙ = PERM. MKRK. SET

I.P. Set are 13/16" I.D. iron pipes 30" long with cap stamped EMHT INC. Permanent Markers set are one-inch solid iron pins with aluminum cap stamped EMHT INC.

GRAPHIC SCALE (in feet)



By Heather L. King 6/23/16  
 Heather L. King  
 Professional Surveyor No. 8307  
 Date

J:\20151683\DWG\045HEETS\BOUNDARY\20151683-VS-BNDY-05.DWG plotted by WEBB, TEAGUE on 6/20/2016 2:13:42 PM last saved by TWEBB on 6/20/2016 2:13:31 PM