



Evans, Mechwart, Hambleton & Tilton, Inc.
Engineers • Surveyors • Planners • Scientists
5500 New Albany Road, Columbus, OH 43054
Phone: 614.775.4500 Toll Free: 888.775.3648
emht.com

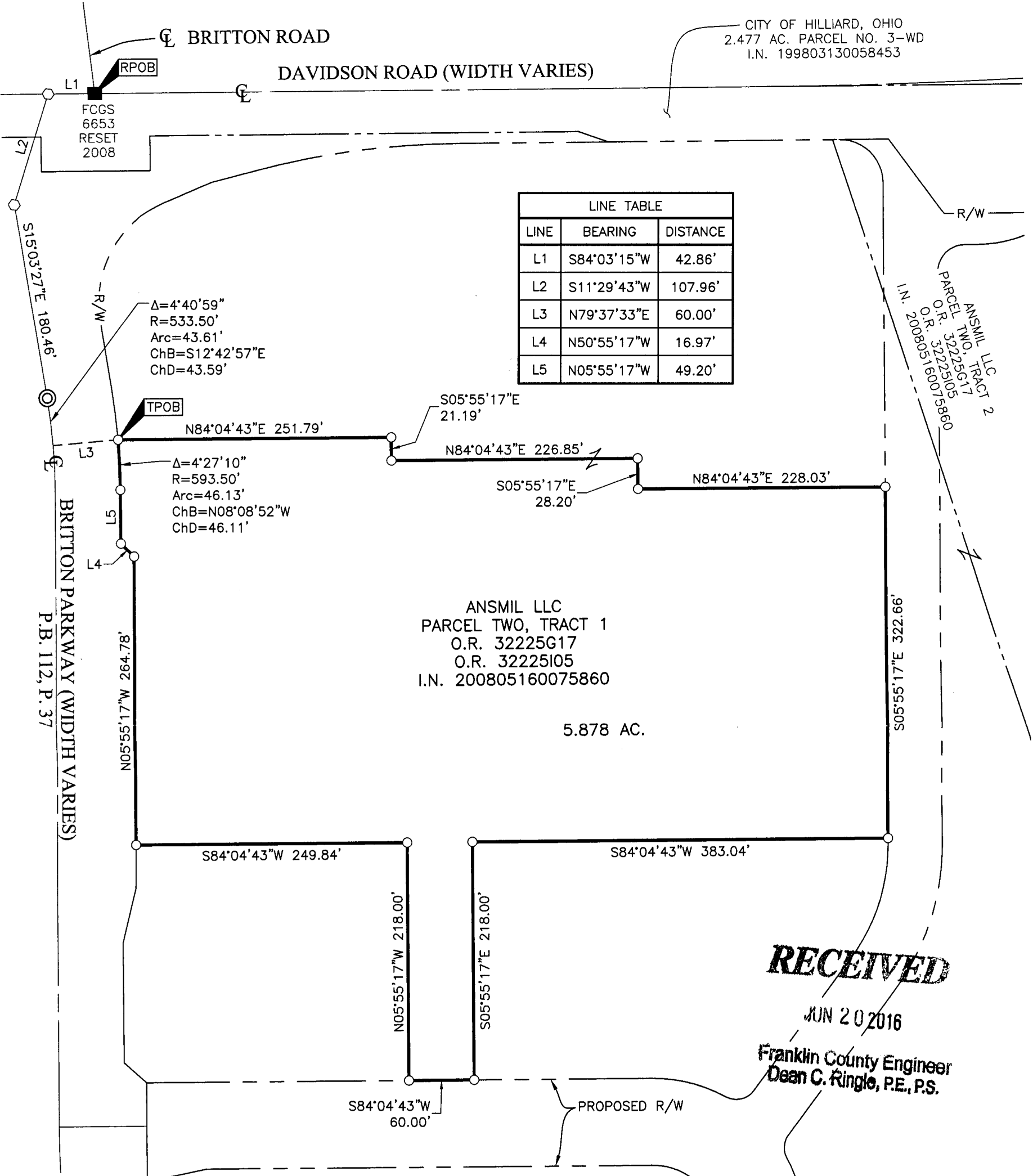
SURVEY OF ACREAGE PARCEL

VIRGINIA MILITARY SURVEY NO. 4854
CITY OF HILLIARD, COUNTY OF FRANKLIN, STATE OF OHIO

Date: June 15, 2016

Job No: 2015-1683

Scale: 1" = 100'



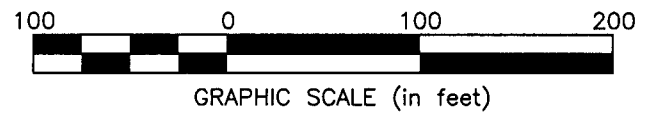
RECEIVED

JUN 20 2016

Franklin County Engineer
Dean C. Ringle, P.E., P.S.

- = STONE FND.
- = MON. FND.
- = I.P. FND.
- = I.P. SET
- = MAG. NAIL FND.
- = MAG. NAIL SET
- ▲ = R.R. SPK. FND.
- △ = R.R. SPK. SET
- = P.K. NAIL FND.
- ◎ = PERM. MRKR. SET

I.P. Set are 13/16" I.D. iron pipes 30" long with cap stamped EMHT INC. Permanent Markers set are one-inch solid iron pins with aluminum cap stamped EMHT INC.



BASIS OF BEARINGS:
Bearings are based on the Ohio State Plane Coordinate System, South Zone, as per NAD83 (1986 Adjustment). Control for bearings was from coordinates of monuments FCGS 0005 RESET and FCGS 0006, having a bearing of North 23° 37' 07" West, established by the Franklin County Engineering Department, using Global Positioning System procedures and equipment.

SURVEY NOTE:
This survey was prepared using documents of record, prior plats of survey, and observed evidence located by an actual field survey performed in November of 2006.

By Heather L. King 6/16/16
Heather L. King Date
Professional Surveyor No. 8307

J:\20151683\DWG\04SHEETS\BOUNDARY\20151683-VS-BNDY-03.DWG plotted by KING, HEATHER on 6/16/2016 2:38:32 PM last saved by HKING on 6/16/2016 2:37:45 PM