



Evans, Mechwart, Hambleton & Tilton, Inc.  
 Engineers • Surveyors • Planners • Scientists  
 5500 New Albany Road, Columbus, OH 43054  
 Phone: 614.775.4500 Toll Free: 888.775.3648  
 emht.com

# SURVEY OF ACREAGE PARCEL

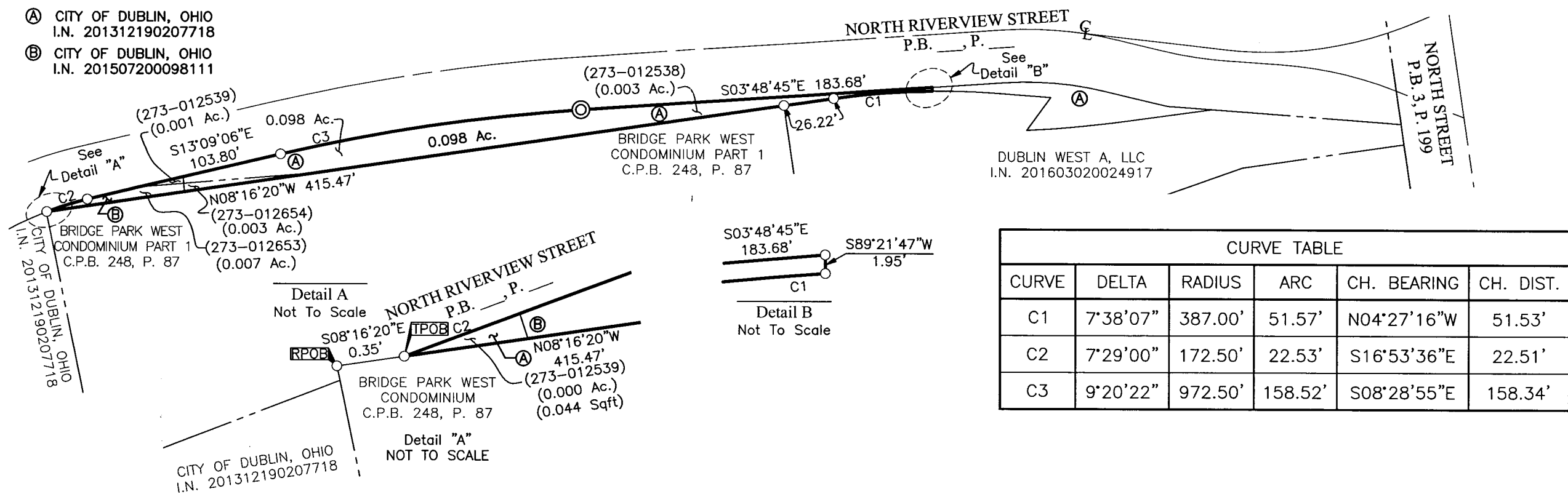
## VIRGINIA MILITARY SURVEY NUMBER 2542

### CITY OF DUBLIN, COUNTY OF FRANKLIN, STATE OF OHIO

Date: August 8, 2016

Scale: 1" = 60'

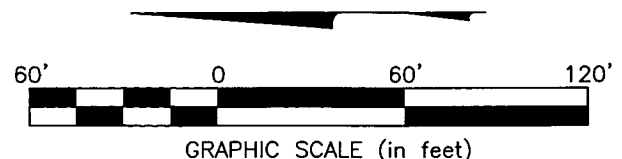
Job No: 2015-1275



CURVE TABLE					
CURVE	DELTA	RADIUS	ARC	CH. BEARING	CH. DIST.
C1	7°38'07"	387.00'	51.57'	N04°27'16"W	51.53'
C2	7°29'00"	172.50'	22.53'	S16°53'36"E	22.51'
C3	9°20'22"	972.50'	158.52'	S08°28'55"E	158.34'

**SURVEY NOTE:**  
 This survey was prepared using documents of record, prior plats of survey, and observed evidence located by an actual field survey performed in July 2016.

**BASIS OF BEARINGS:**  
 The Bearings shown hereon are based on the Ohio State Plane Coordinate System, (South Zone), as per NAD83 (1986 Adjustment). Control for bearings was from coordinates of monuments FRANK 73 and FRANK 74, established by the Franklin County Engineering Department, using Global Positioning System procedures and equipment, having a bearing of South 75° 57' 18" East between said monuments.

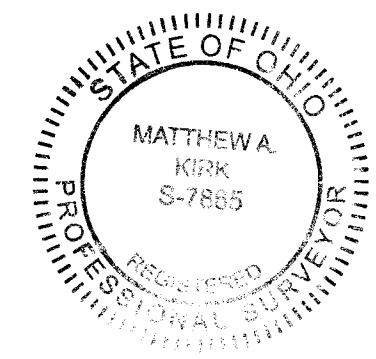


○ = I.P. SET  
 ⊙ = PERM. MRKR. SET  
 I.P. Set are 13/16" I.D. iron pipe with cap inscribed EMHT INC. Permanent Marker set is a one-inch solid iron pin capped with an aluminum cap stamped EMHT INC.

RECEIVED

AUG 09 2016

**Franklin County Engineer**  
 Dean C. Ringle, P.E., P.S.



By Matthew A. Kirk Date 8 Aug 16  
 Matthew A. Kirk  
 Professional Surveyor No. 7865

J:\20151275\DWG\04SHEETS\BOUNDARY\20151275-VS-BNDY-01.DWG plotted by KIRK, MATTHEW on 8/8/2016 9:47:57 AM last saved by MKIRK on 8/8/2016 9:47:42 AM