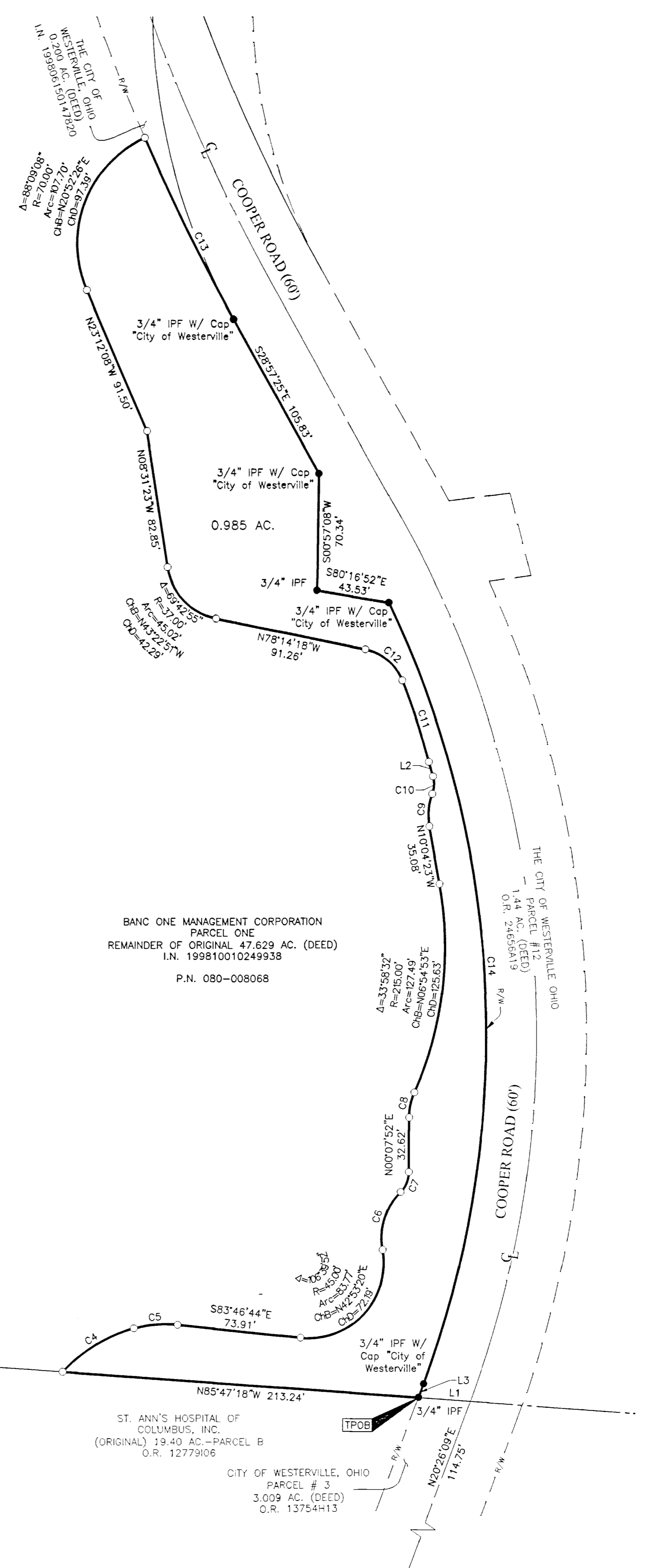


SURVEY OF ACREAGE PARCEL

QUARTER TOWNSHIP 2, TOWNSHIP 2, RANGE 17

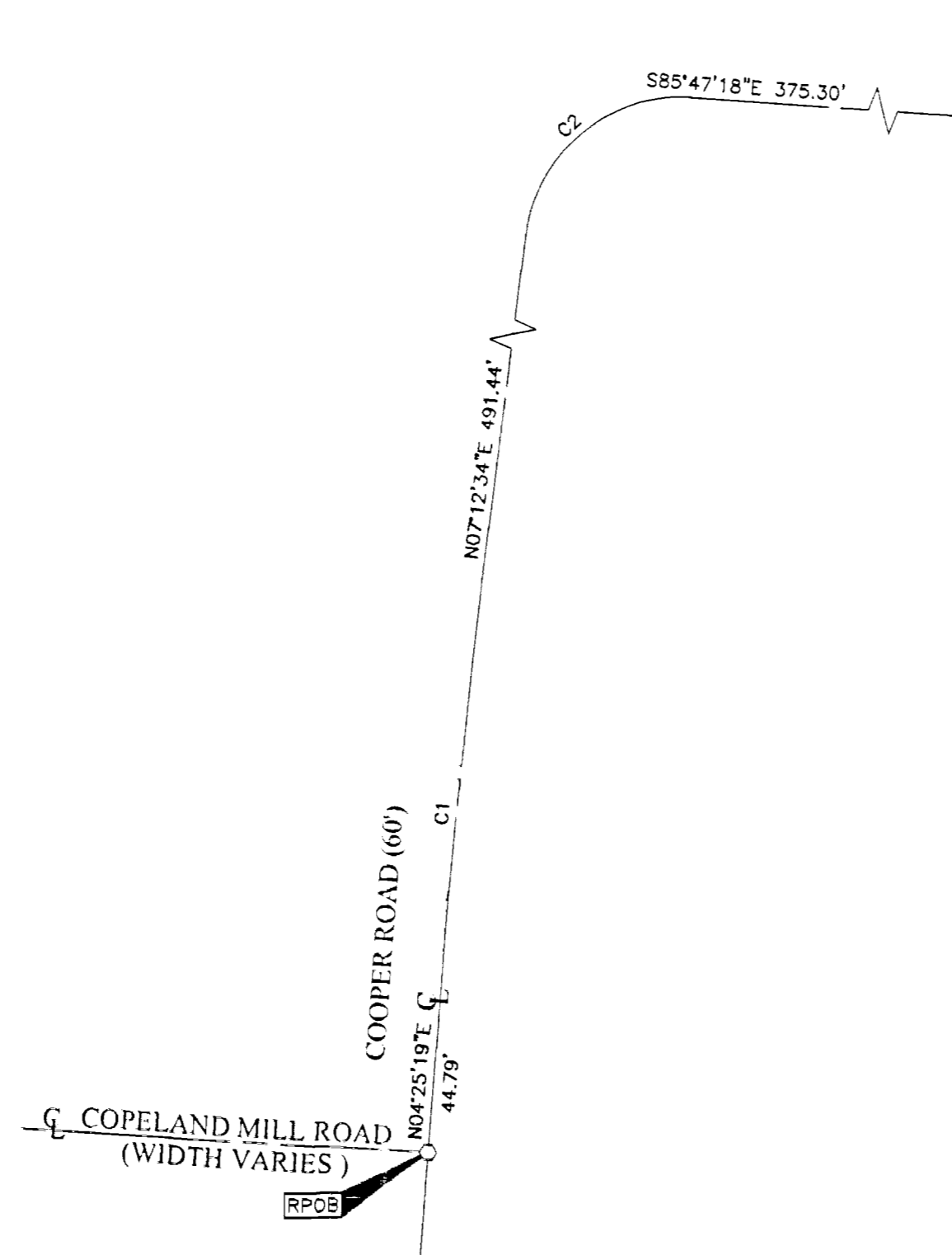
UNITED STATES MILITARY LANDS

CITY OF WESTERVILLE, COUNTY OF FRANKLIN, STATE OF OHIO



LINE TABLE		
LINE	BEARING	DISTANCE
L1	N85°47'18"W	31.24'
L2	N15°45'35"W	9.15'
L3	S20°26'09"W	8.81'

CURVE TABLE				
CURVE	DELTA	RADIUS	ARC	CH. DIST.
C1	2°47'18"	2864.79'	139.37'	139.36'
C2	87°00'08"	50.00'	75.92'	68.84'
C3	73°46'33"	286.48'	368.88'	343.92'
C4	32°14'37"	90.00'	50.65'	49.98'
C5	21°31'51"	70.00'	26.30'	26.15'
C6	55°17'54"	39.00'	37.64'	36.20'
C7	44°43'26"	17.00'	13.27'	12.94'
C8	23°46'17"	37.00'	15.35'	15.24'
C9	30°24'18"	37.00'	19.63'	19.41'
C10	35°31'33"	17.00'	10.54'	10.37'
C11	5°44'57"	510.69'	51.24'	51.22'
C12	57°05'48"	30.00'	29.90'	28.67'
C13	5°35'05"	1236.23'	120.50'	120.45'
C14	45°56'06"	599.50'	480.63'	467.86'

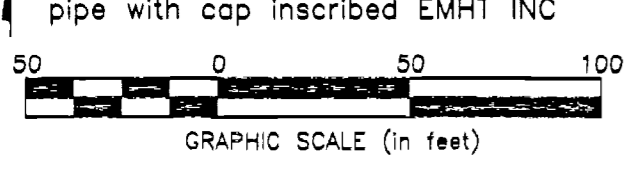


RECEIVED
AUG 06 2015
Franklin County Engineer
Dana C. Ruff, P.E., P.S.

SURVEY NOTE:
This survey was prepared using documents of record, prior plats of survey, and observed evidence located by an actual field survey performed in November and December 2011, January, 2012, March 2013 and August 2015.

BASIS OF BEARINGS:
The Bearings shown hereon are based on the Ohio State Plane Coordinate System South Zone as per NAD83 (1986 Adjustment). Control for bearings was from coordinates of monuments FRANK 85 and WEST 17, having a bearing of North 28° 19' 57" East as established by the Franklin County Engineering Department, using Global Positioning System procedures and equipment.

- = STONE FND.
 - = MON. FND.
 - = I.P. FND.
 - = I.P. SET
 - = MAG. NAIL FND.
 - = MAG. NAIL SET
 - ▲ = R.R. SPK. FND.
 - ▲ = R.R. SPK. SET
 - = P.K. NAIL FND.
- I.P. Set are 1 3/16" I.D. iron pipe with cap inscribed EMHT INC



By *Joshua M. Meyer* 8-5-2015
Professional Surveyor No. 8485 Date

		Date: August 5, 2015
		Scale: 1" = 50'
Evans, Weisbart, Hambleton & Tilton, Inc. Engineers + Surveyors + Planners + Scientists 5500 New Albany Road, Columbus, OH 43054 Phone: 614.275.4500 Toll Free: 888.775.3648 emht.com		Job No: 2013-1621
		Sheet: 1 of 1
REVISIONS		
MARK	DATE	DESCRIPTION