



Evans, Mechwart, Hambleton & Tilton, Inc.
 Engineers • Surveyors • Planners • Scientists
 5500 New Albany Road, Columbus, OH 43054
 Phone: 614.775.4500 Toll Free: 888.775.3648

emht.com

SURVEY OF ACREAGE PARCEL

QUARTER TOWNSHIP 3, TOWNSHIP 2, RANGE 16

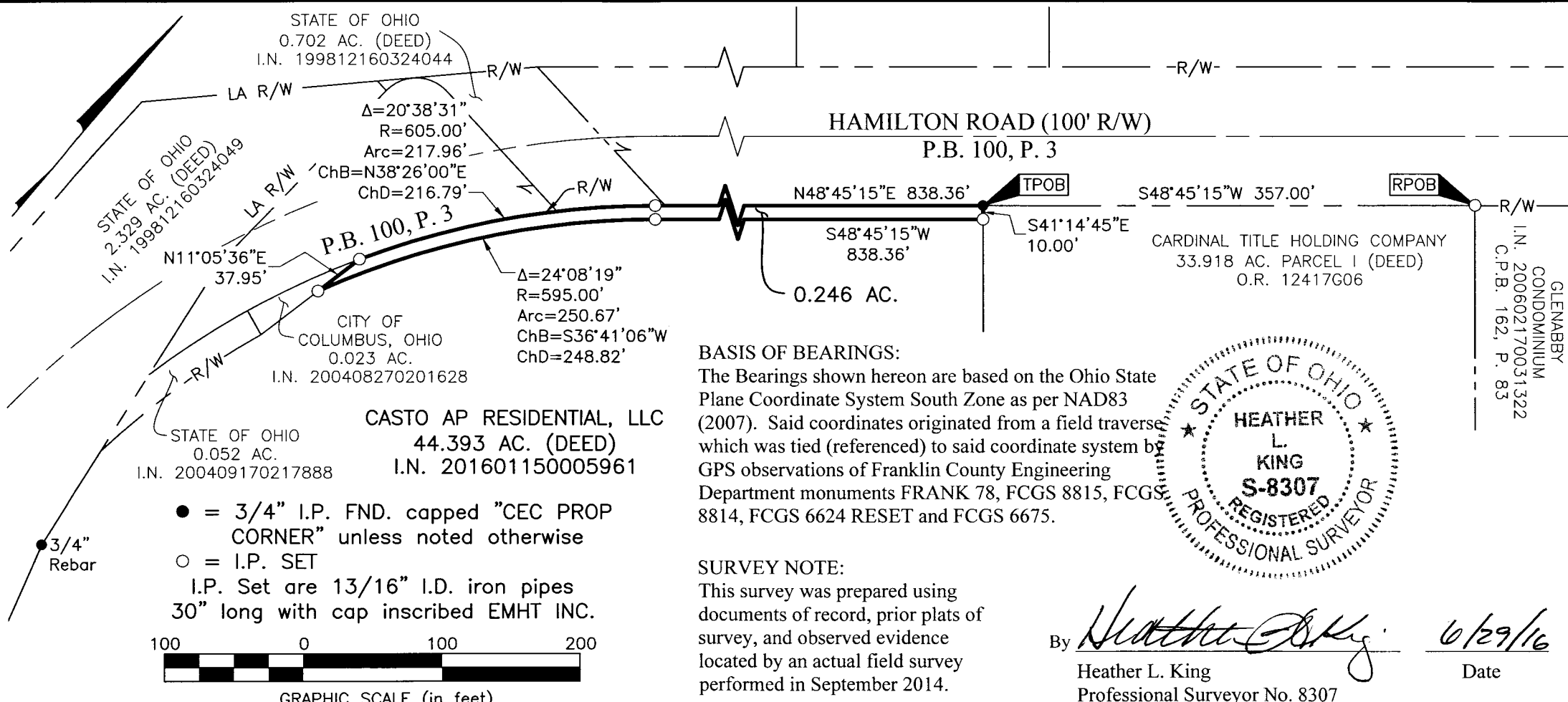
UNITED STATES MILITARY LANDS

CITY OF COLUMBUS, COUNTY OF FRANKLIN, STATE OF OHIO

Date: June 15, 2016

Scale: 1" = 100'

Job No: 2015-1686

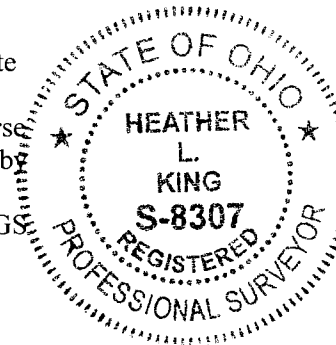


BASIS OF BEARINGS:

The Bearings shown hereon are based on the Ohio State Plane Coordinate System South Zone as per NAD83 (2007). Said coordinates originated from a field traverse which was tied (referenced) to said coordinate system by GPS observations of Franklin County Engineering Department monuments FRANK 78, FCGS 8815, FCGS 8814, FCGS 6624 RESET and FCGS 6675.

SURVEY NOTE:

This survey was prepared using documents of record, prior plats of survey, and observed evidence located by an actual field survey performed in September 2014.



By Heather L. King 6/29/16
 Heather L. King Date
 Professional Surveyor No. 8307

Franklin County Engineer
 Dean C. Kingie, P.E., P.S.

JUN 29 2016

RECEIVED