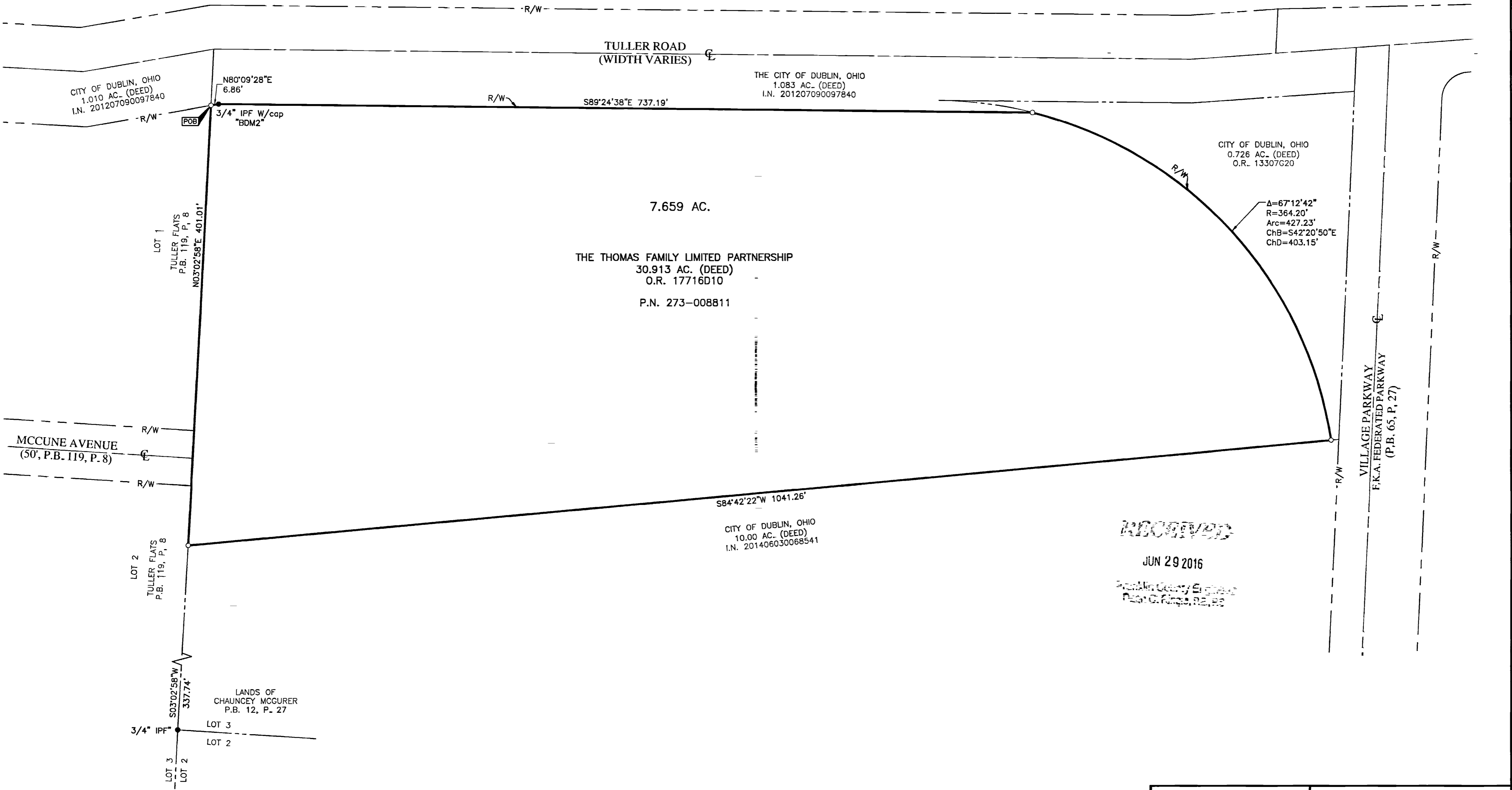


SURVEY OF ACREAGE PARCEL

QUARTER TOWNSHIP 2, TOWNSHIP 2, RANGE 19

UNITED STATES MILITARY LANDS

CITY OF DUBLIN, COUNTY OF FRANKLIN, STATE OF OHIO

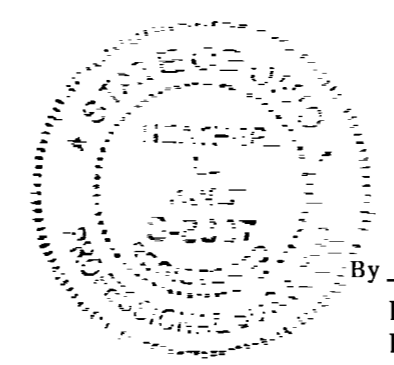


RECEIVED
 JUN 29 2016
 Franklin County Engineer
 Peter G. Ringel, P.E.

- = STONE FND.
 - = MON. FND.
 - = I.P. FND.
 - = I.P. SET
 - = MAG. NAIL FND.
 - = MAG. NAIL SET
 - ▲ = R.R. SPK. FND.
 - △ = R.R. SPK. SET
 - ◆ = P.K. NAIL FND.
- I.P. Set are 13/16" I.D. iron pipes 30" long with cap inscribed EMHT INC.
- 50 0 50 100
 GRAPHIC SCALE (in feet)

SURVEY NOTE:-
 This survey was prepared using documents of record, prior plats of survey, and observed evidence located by an actual field survey.

BASIS OF BEARINGS:-
 The Bearings shown hereon are based on the Ohio State Plane Coordinate System South Zone as per NAD83 (1986 Adjustment). Control for bearings was from coordinates of monuments FRANK 73 and FRANK 174, established by the Franklin County Engineering Department, using Global Positioning System procedures and equipment, giving a bearing of South 03° 26' 58" West for a portion of Tuller Ridge Drive.



By *Heather L. King* 6/28/16
 Heather L. King Date
 Professional Surveyor No. 8307

EMHT		Date: June 27, 2016
Evans, Mechwart, Hambleton & Tilton, Inc. Engineers • Surveyors • Planners • Scientists 5500 New Albany Road, Columbus, OH 43054 Phone 614.775.4500 Toll Free: 888.775.3448 emht.com		Scale: 1" = 50'
		Job No: 2016-0080
		Sheet: 1 of 1
REVISIONS		
MARK	DATE	DESCRIPTION

J:\20160080\DWG\CAD\SET\BOUNDARY\20160080-VS-BNDY-01.DWG plotted by KING on 6/27/2016 4:17:39 PM