

RECEIVED

APR 20 2016

Franklin County Engineer
Dean C. Ringle, P.E., P.S.

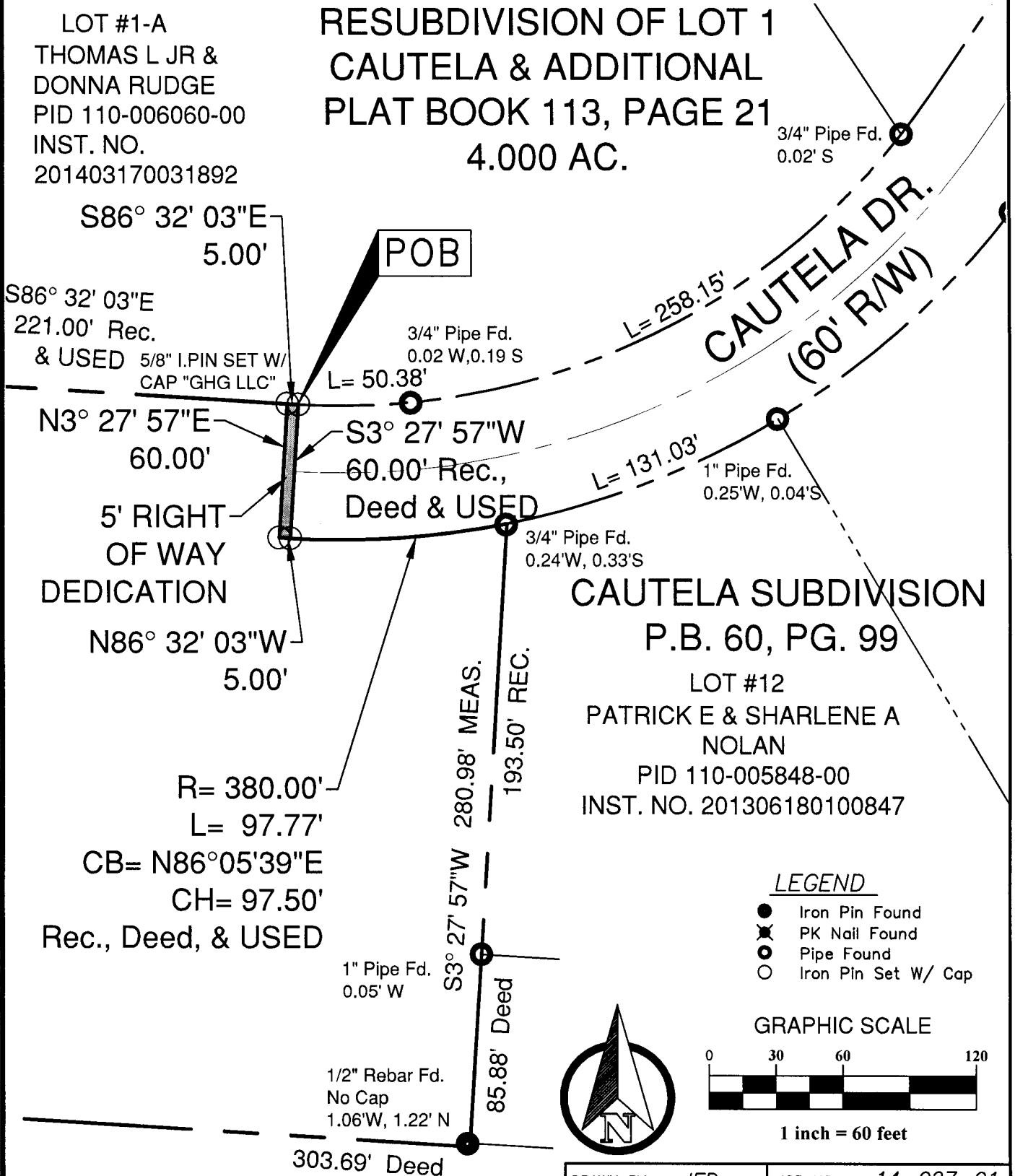
PLAT OF 5' RIGHT OF WAY DEDICATION

SITUATE IN THE STATE OF OHIO, COUNTY OF FRANKLIN, BLENDON TOWNSHIP, SECTION 1,
TOWNSHIP 2, RANGE 17, UNITED STATES MILITARY LANDS, AND BEING A PART OF THE ORIGINAL
26.461 ACRES OR CONVEYED TO CORPORATE PROPERTIES, LLC IN INSTRUMENT
NO. 200911040159792, RECORDER'S OFFICE, FRANKLIN, OHIO.

LOT #1-A
THOMAS L JR &
DONNA RUDGE
PID 110-006060-00
INST. NO.
201403170031892

RESUBDIVISION OF LOT 1
CAUTELA & ADDITIONAL
PLAT BOOK 113, PAGE 21
4.000 AC.

W:\GandeeHeydinger\Group\Civil 3D Projects\16-047-01 - Silvestri - Cautela Development\DWG\SURVEY\16-047-01 Cautela Plat-Dedication Exhibit.dwg PLAT Mar 22, 2016 - 2:40:34pm cwinke



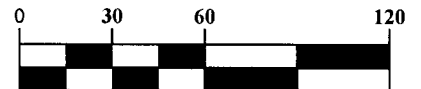
CAUTELA SUBDIVISION
P.B. 60, PG. 99

LOT #12
PATRICK E & SHARLENE A
NOLAN
PID 110-005848-00
INST. NO. 201306180100847

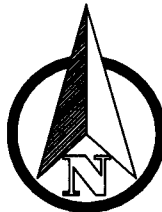
LEGEND

- Iron Pin Found
- ⊗ PK Nail Found
- Pipe Found
- Iron Pin Set W/ Cap

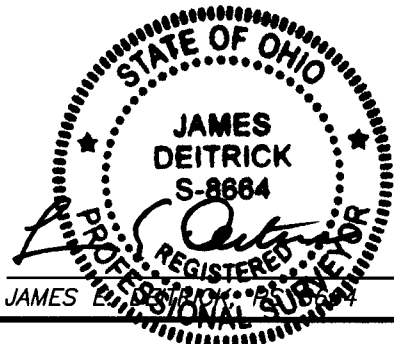
GRAPHIC SCALE



1 inch = 60 feet



DRAWN BY: JED	JOB NO.: 14-027-01
DATE: 06/16/15	CHECKED BY: CAW



3/22/16
DATE

GHD

Gandee Heydinger Group
CIVIL ENGINEERING AND ENERGY SERVICES

642 BROOKSIDE BLVD., WESTERVILLE, OH 43081
P: (614) 942-6042 F: (614) 942-6041