



Evans, Mechwart, Hambleton & Tilton, Inc.  
 Engineers • Surveyors • Planners • Scientists  
 5500 New Albany Road, Columbus, OH 43054  
 Phone: 614.775.4500 Toll Free: 888.775.3648  
 emht.com

# SURVEY OF ACREAGE PARCEL

## SECTION 6, TOWNSHIP 5, RANGE 22

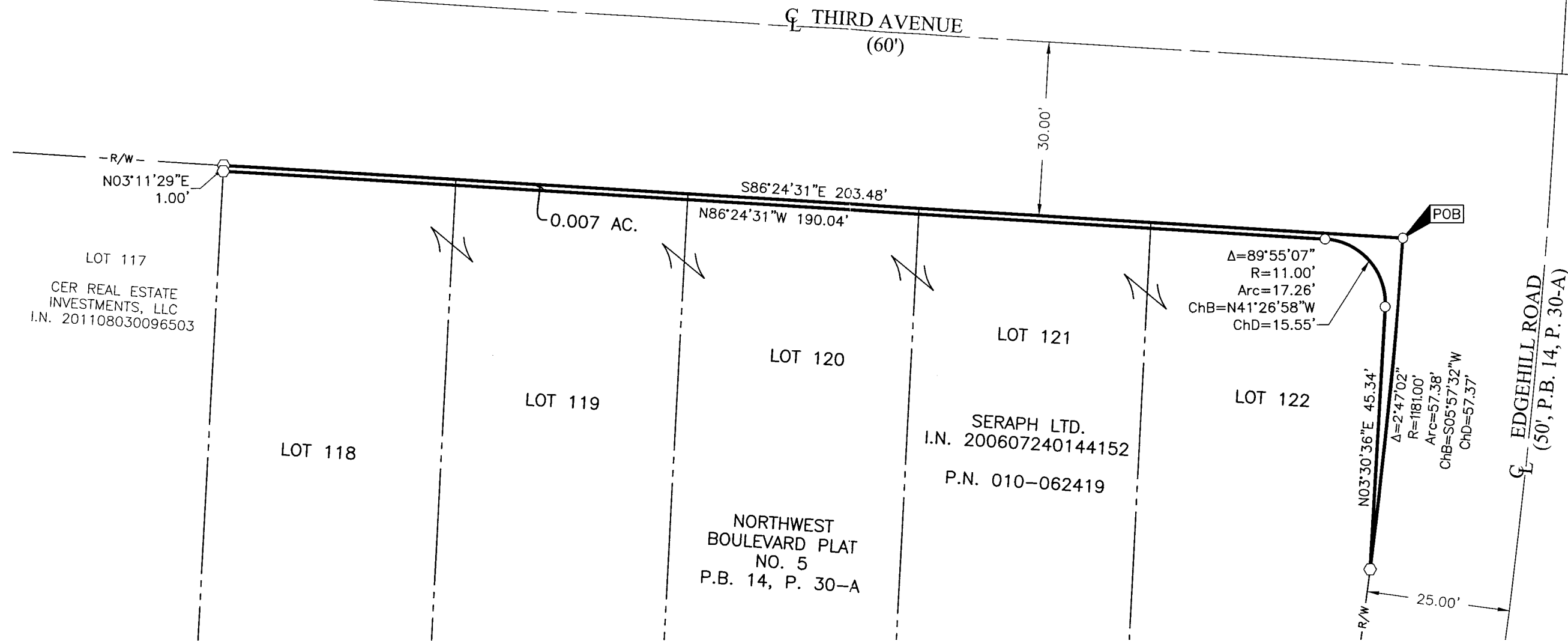
### REFUGEE LANDS

### CITY OF COLUMBUS, COUNTY OF FRANKLIN, STATE OF OHIO

Date: April 21, 2016

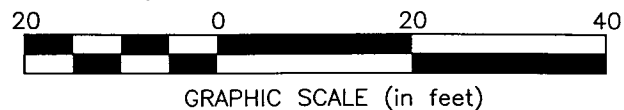
Scale: 1" = 20'

Job No: 2013-1505



- = STONE FND.
- = MON. FND.
- = I.P. FND.
- = I.P. SET
- = MAG. NAIL FND.
- = MAG. NAIL SET
- ▲ = R.R. SPK. FND.
- △ = R.R. SPK. SET
- ◆ = P.K. NAIL FND.

I.P. Set are 13/16" I.D. iron pipes 30" long with cap inscribed EMHT INC.



**BASIS OF BEARINGS:**

The bearings shown hereon are based on the Ohio State Plane Coordinate System South Zone as per NAD83 (1986 adjustment). Control for the bearings was from coordinates of monuments 5-83 and 4-83, having a bearing of North  $00^{\circ}22'10''$  West, for a portion of the west limited access right-of-way of Olentangy River Road, established by the Franklin County Engineering Department using Global Positioning System procedures and equipment, and noted on Plat Book 118, Page 47.

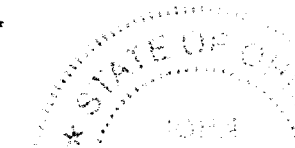
**SURVEY NOTE:**

This survey was prepared using documents of record, prior plats of survey, and observed evidence located by an actual field survey in May 2015.

**RECEIVED**

MAY 05 2016

Franklin County Engineer  
 Dean C. Ringle, P.E., P.S.



By John C. Dodgion  
 John C. Dodgion  
 Professional Surveyor No. 8069

05/03/2016  
 Date

J:\20131505\DWG\04SHEETS\BOUNDARY\20131505-VS-BNDY-02.DWG plotted by KING, BRANDON on 5/3/2016 10:34:10 AM last saved by KING, BRANDON on 5/3/2016 10:33:54 AM