



Evans, Mechwart, Hambleton & Tilton, Inc.  
 Engineers • Surveyors • Planners • Scientists  
 5500 New Albany Road, Columbus, OH 43054  
 Phone: 614.775.4500 Toll Free: 888.775.3648  
 emht.com

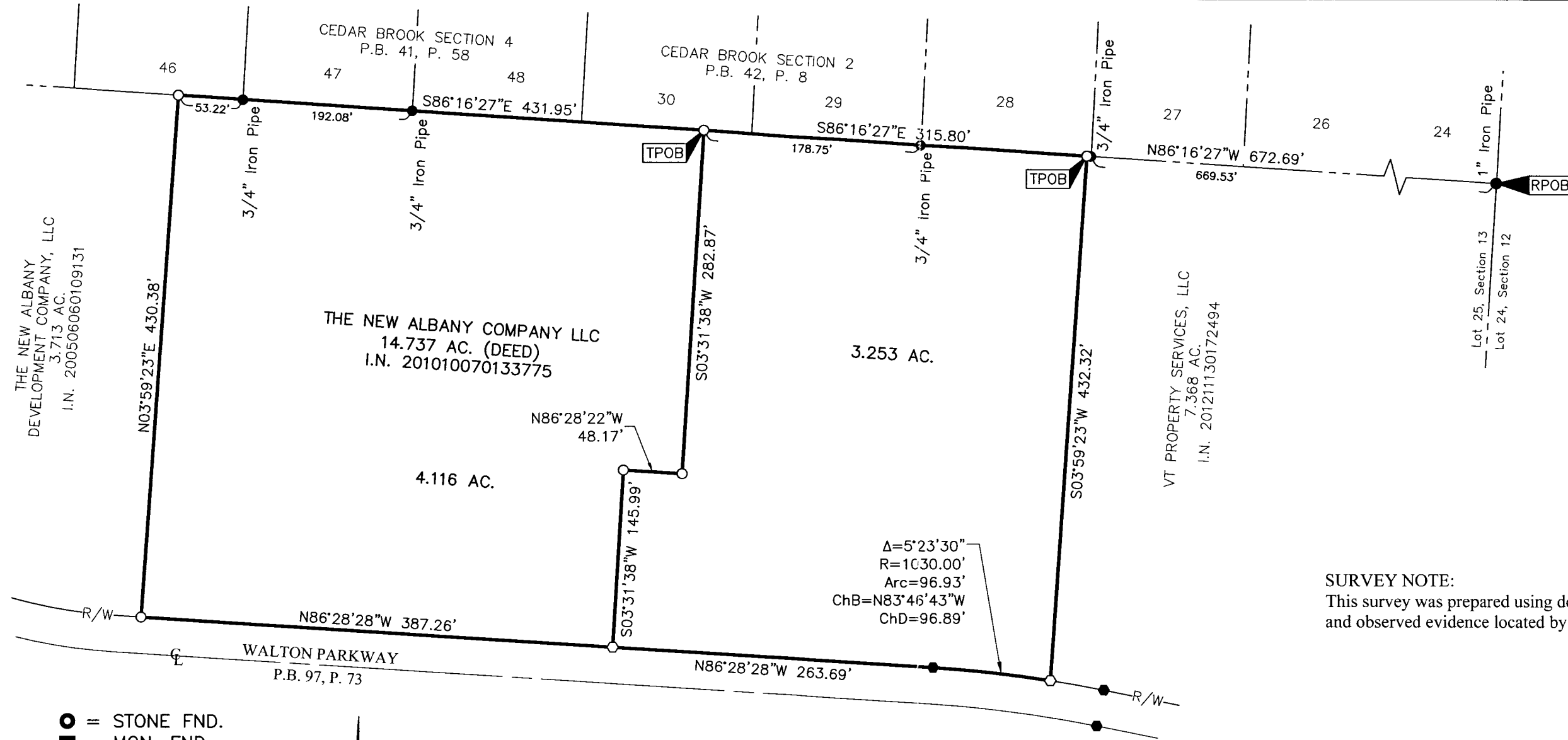
# SURVEY OF ACREAGE PARCELS

## LOT 25, SECTION 13, QUARTER TOWNSHIP 1, TOWNSHIP 2, RANGE 16

### UNITED STATES MILITARY LANDS

### CITY OF NEW ALBANY, COUNTY OF FRANKLIN, STATE OF OHIO

Date: May 19, 2016  
 Scale: 1" = 100'  
 Job No: 2016-0126



TWEEN BRANDS SERVICE CO  
 16.904 AC.  
 I.N. 200608290171989

VT PROPERTY SERVICES, LLC  
 7.368 AC.  
 I.N. 201211130172494

THE NEW ALBANY  
 DEVELOPMENT COMPANY, LLC  
 3.713 AC.  
 I.N. 200506060109131

THE NEW ALBANY COMPANY LLC  
 14.737 AC. (DEED)  
 I.N. 201010070133775

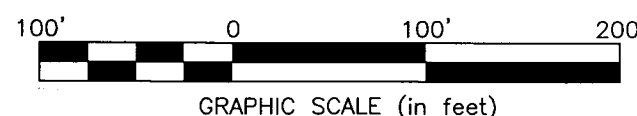
$\Delta=5^{\circ}23'30''$   
 $R=1030.00'$   
 $Arc=96.93'$   
 $ChB=N83^{\circ}46'43''W$   
 $ChD=96.89'$

**SURVEY NOTE:**  
 This survey was prepared using documents of record, prior plats of survey and observed evidence located by an actual field survey.

**BASIS OF BEARINGS:**  
 Bearings are based on the Ohio State Plane Coordinate System as per NAD83 South Zone (1986 Adjustment). Control for bearings was from coordinates of monuments Frank 78 & Frank 178, having a bearing of North 57° 24' 57" East, established by the Franklin County Engineering Department, using Global Positioning System procedures and equipment.

- = STONE FND.
- = MON. FND.
- = I.P. FND.
- = I.P. SET
- = MAG. NAIL FND.
- = MAG. NAIL SET
- ▲ = R.R. SPK. FND.
- △ = R.R. SPK. SET
- = P.K. NAIL FND.

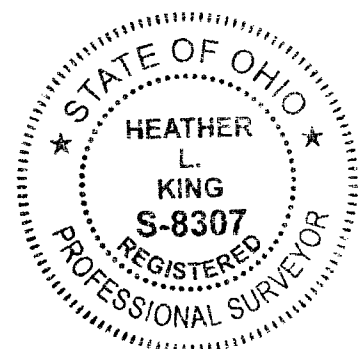
I.P. Set are 13/16" I.D. iron pipes  
 30" long with cap inscribed EMHT INC.



**RECEIVED**

MAY 24 2016

Franklin County Engineer  
 Dean C. Ringle, P.E., P.S.



By Heather L. King 5/20/16  
 Heather L. King  
 Professional Surveyor No. 8307  
 Date

J:\20160126\DWG\04SHEETS\BOUNDARY\20160126-VS-BNDY-02.DWG plotted by WEBB, TEAGUE on 5/19/2016 9:16:55 AM last saved by TWEBB on 5/19/2016 9:16:34 AM