



Evans, Mechwart, Hambleton & Tilton, Inc.
 Engineers • Surveyors • Planners • Scientists
 5500 New Albany Road, Columbus, OH 43054
 Phone: 614.775.4500 Toll Free: 888.775.3648
 emht.com

SURVEY OF ACREAGE PARCEL

SECTION 6, TOWNSHIP 5, RANGE 22

REFUGEE LANDS

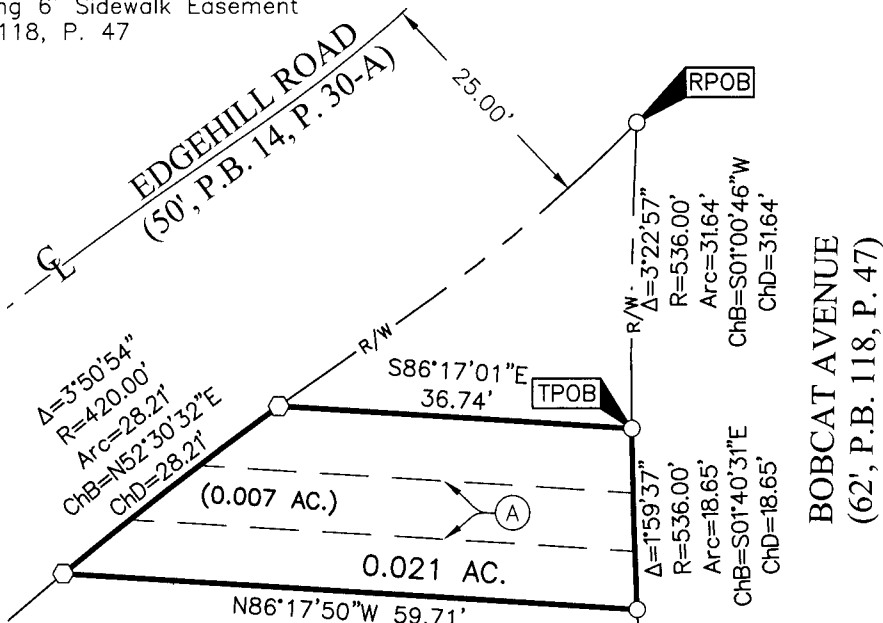
CITY OF GRANDVIEW HEIGHTS, COUNTY OF FRANKLIN, STATE OF OHIO

Date: April 21, 2016

Job No: 2013-1505

Scale: 1" = 20'

(A) Existing 6' Sidewalk Easement
 P.B. 118, P. 47



- = STONE FND.
- = MON. FND.
- = I.P. FND.
- = I.P. SET
- = MAG. NAIL FND.
- = MAG. NAIL SET
- ▲ = R.R. SPK. FND.
- △ = R.R. SPK. SET
- ◆ = P.K. NAIL FND.

I.P. Set are 13/16" I.D. iron pipes
 30" long with cap inscribed EMHT INC.



GRAPHIC SCALE (in feet)

BASIS OF BEARINGS:

The bearings shown hereon are based on the Ohio State Plane Coordinate System South Zone as per NAD83 (1986 adjustment). Control for the bearings was from coordinates of monuments 5-83 and 4-83, having a bearing of North 00° 22' 10" West, for a portion of the west limited access right-of-way of Olentangy River Road, established by the Franklin County Engineering Department using Global Positioning System procedures and equipment, and noted on Plat Book 118, Page 47.

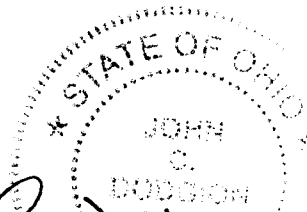
SURVEY NOTE:

This survey was prepared using documents of record, prior plats of survey, and observed evidence located by an actual field survey in May 2015.

RECEIVED

MAY 05 2016

Franklin County Engineer
 Dean C. Ringe, P.E., P.S.



By John C. Dodgion
 John C. Dodgion
 Professional Surveyor No. 8069

05/03/2016
 Date

J:\20131505\DWG\CASHSETS\BOUNDARY\20131505-VS-BNDY-08.DWG plotted by KING, BRANDON on 5/3/2016 10:28:15 AM last saved by KING on 5/3/2016 10:27:48 AM Xrefs: