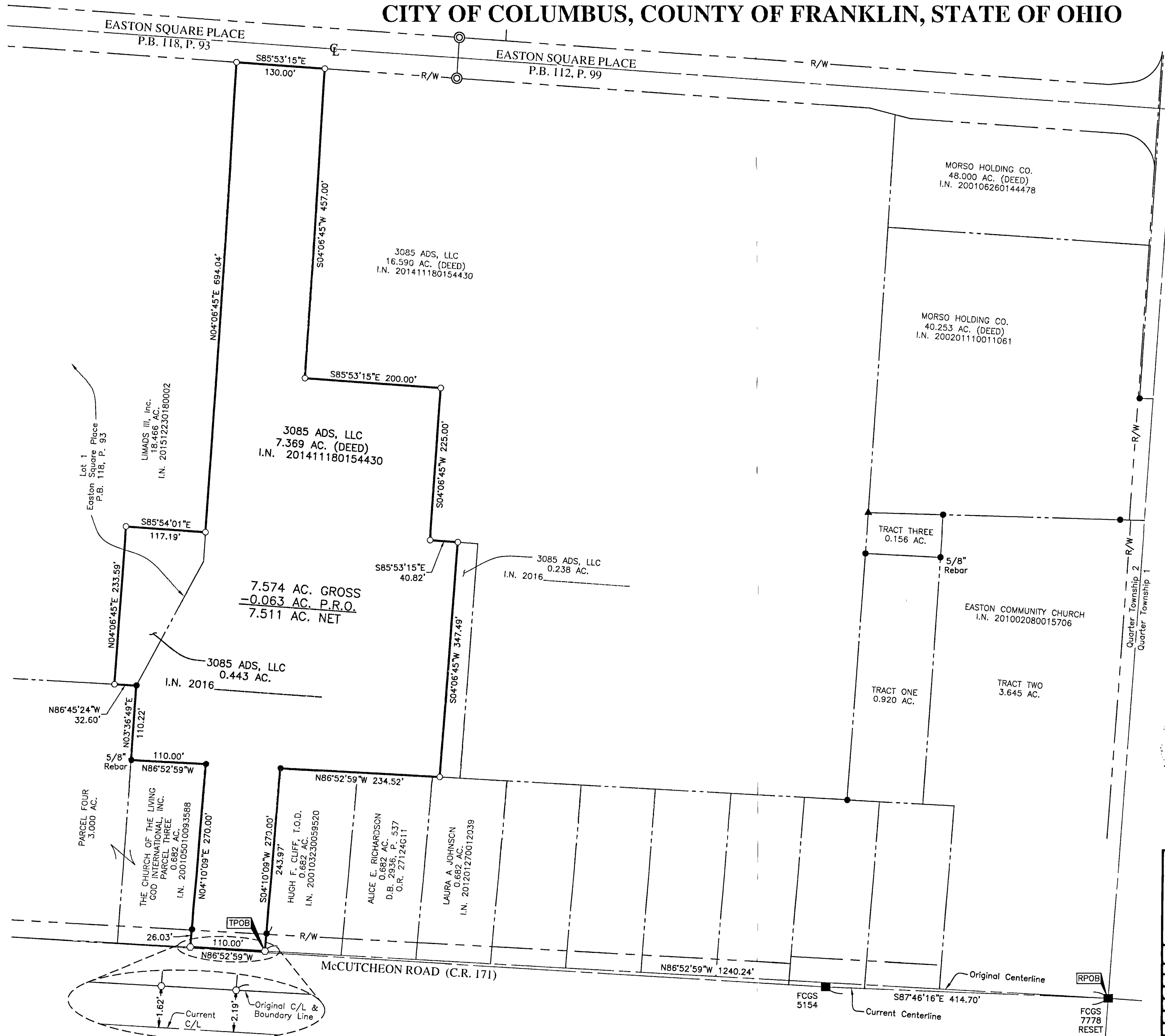


# SURVEY OF ACREAGE PARCEL

## QUARTER TOWNSHIP 2, TOWNSHIP 1, RANGE 17

### UNITED STATES MILITARY LANDS

### CITY OF COLUMBUS, COUNTY OF FRANKLIN, STATE OF OHIO



■ = MON. FND.  
 ● = 3/4" I.P. FND.  
 ○ = I.P. SET  
 ○ = MAG. NAIL SET  
 ▲ = R.R. SPK. FND.  
 ⊙ = PERM. MRKR. SET

I.P. Set are 13/16" I.D. iron pipes  
 30" long with cap stamped EMHT INC.  
 Permanent Markers set are one-inch  
 solid iron pins with aluminum cap  
 stamped EMHT INC.

100 0 100 200  
 GRAPHIC SCALE (in feet)

**SURVEY NOTE:**  
 This survey was prepared using documents of record, prior plats of survey, and observed evidence located by an actual field survey.

**BASIS OF BEARINGS:**  
 The Bearings shown hereon are based on the Ohio State Plane Coordinate System (South Zone) as per NAD83 (1986 adjustment). Control for bearings was from coordinates of monuments F.C.G.S. 7778 & 8858, having a bearing between them of South 03°57'06" West, established by the Franklin County Engineering Department, using Global Positioning System procedures and equipment.

**RECEIVED**

MAR 09 2016

Franklin County Engineer  
 Evan C. Nigro, P.E., L.S.

BY *Heather L. King* 3/9/16 Date  
 Heather L. King Professional Surveyor No. 8307

 Evans, Mechwart, Hambleton & Tilton, Inc. Engineers • Surveyors • Planners • Scientists 5500 New Albany Road, Columbus, OH 43054 Phone: 614.775.4500 Toll Free: 888.775.3648 emht.com	Date: February 1, 2016	
	Scale: 1" = 100'	
	Job No: 2015-0748	
	Sheet: 1 of 1	
REVISIONS		
MARK	DATE	DESCRIPTION

J:\20150748\DWG\0485EES\BONNAPR20150748-VS-BNDY-06.DWG printed by KMC, HEATHER on 3/9/2016 2:50:24 PM last saved by THEBB on 2/2/2016 9:04:38 AM