

J-8-C



Evans, Mechwart, Hambleton & Tilton, Inc.  
Engineers • Surveyors • Planners • Scientists  
5500 New Albany Road, Columbus, OH 43054  
Phone: 614.775.4500 Toll Free: 888.775.3648  
emht.com

# RIGHT-OF-WAY VACATION

QUARTER TOWNSHIP 3, TOWNSHIP 1, RANGE 16  
UNITED STATES MILITARY LANDS  
CITY OF GAHANNA, COUNTY OF FRANKLIN, STATE OF OHIO

Date: April 12, 2016

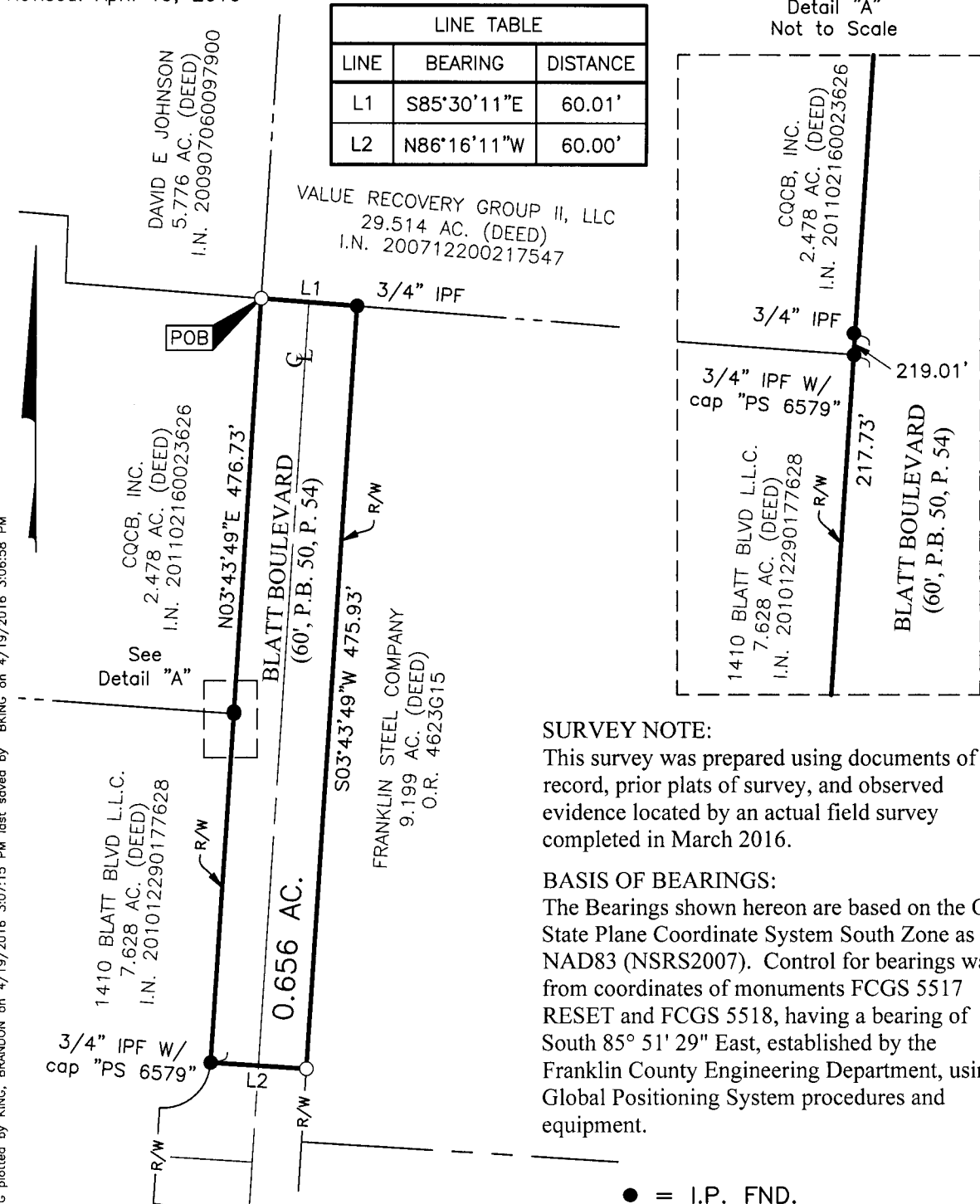
Job No. 2016-0148

Scale: 1" = 100'

Revised: April 19, 2016

LINE TABLE		
LINE	BEARING	DISTANCE
L1	S85°30'11"E	60.01'
L2	N86°16'11"W	60.00'

Detail "A"  
Not to Scale



### SURVEY NOTE:

This survey was prepared using documents of record, prior plats of survey, and observed evidence located by an actual field survey completed in March 2016.

### BASIS OF BEARINGS:

The Bearings shown hereon are based on the Ohio State Plane Coordinate System South Zone as per NAD83 (NSRS2007). Control for bearings was from coordinates of monuments FCGS 5517 RESET and FCGS 5518, having a bearing of South 85° 51' 29" East, established by the Franklin County Engineering Department, using Global Positioning System procedures and equipment.

● = I.P. FND.

○ = I.P. SET

I.P. Set are 13/16" I.D. iron pipes 30" long with cap inscribed EMHT INC.



GRAPHIC SCALE (in feet)



RECEIVED  
APR 22 2016

By

Joshua M. Meyer  
Professional Surveyor No. 8485

4-19-2016

Date

Franklin County Engineer  
Dean C. Ringle, P.E., P.S.

J:\2016\160148\160148-BOUNDARY\20160148-VS-BNDY-01.DWG plotted by KING, BRANDON on 4/19/2016 3:07:15 PM last saved by KING, BRANDON on 4/19/2016 3:06:58 PM Xrefs: