

PLAT OF SURVEY  
LOCATED IN  
STATE OF OHIO, FRANKLIN COUNTY, CITY OF UPPER ARLINGTON  
QUARTER TOWNSHIP 4, TOWNSHIP 1, RANGE 19  
UNITED STATES MILITARY LANDS

RECEIVED

DEC 16 2015

Franklin County Engineer  
Dean C. Ringle, P.E., P.S.

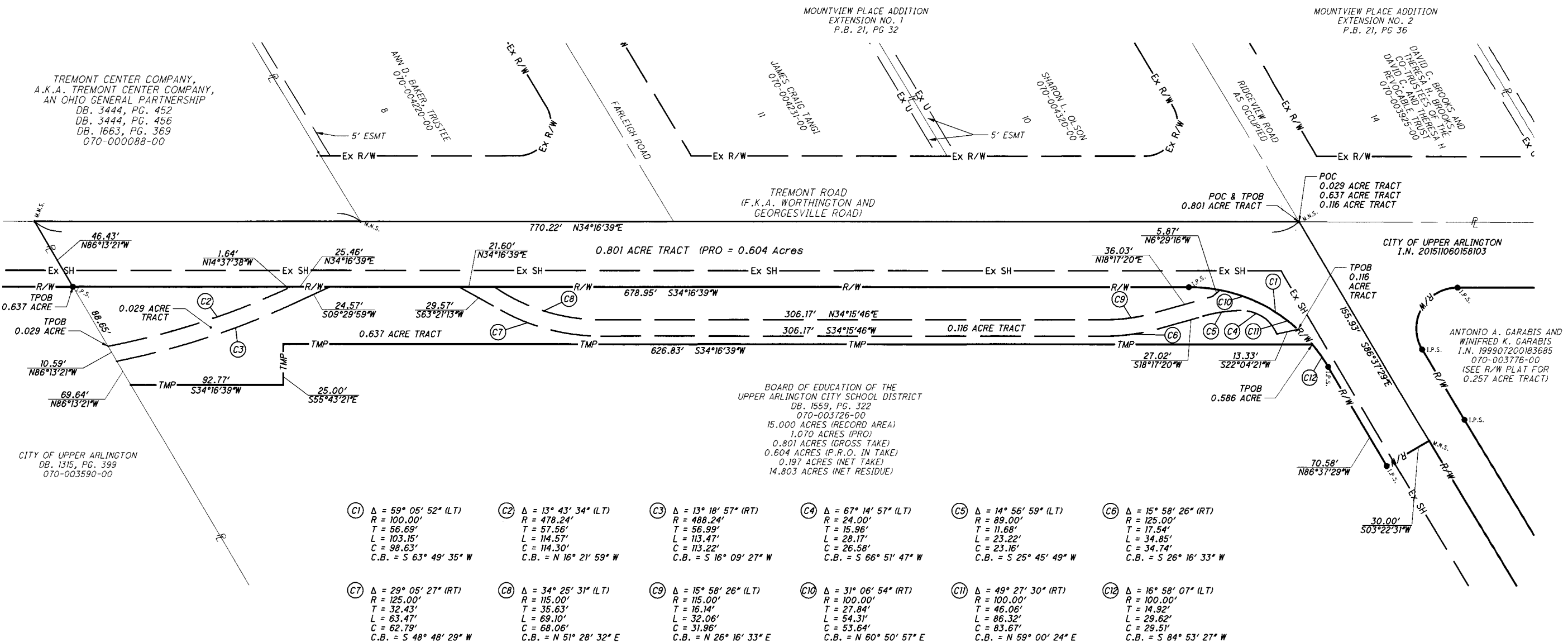
MONUMENT LEGEND

- ☐ PROPOSED R/W MONUMENT BOX
- I.P.F. IRON PIN FOUND
- I.P.S. IRON PIN SET W/ ID CAP
- ⊙ I.P.F. IRON PIPE FOUND
- \*\*\* MAG NAIL SET

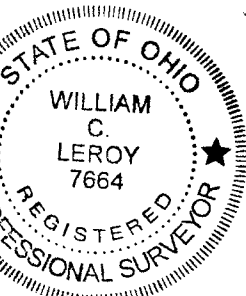
THE BASIS OF BEARINGS ARE REFERENCED TO GRID NORTH AS OBTAINED BY GPS OBSERVATIONS TAKEN FROM FRANKLIN COUNTY ENGINEER MONUMENTS: STATION WICKLIFFE AND UPPER ARLINGTON HIGH SCHOOL, WITH A BEARING OF SOUTH 76°49'48" EAST, BASED ON DATUM: OHIO STATE PLANE SOUTH, NAD83(2007).

PERTINENT DOCUMENTS & OTHER SOURCES OF DATA

1. FRANKLIN COUNTY ROAD RECORD BOOK 6, PAGE 30
2. ALL RECORDS LISTED ON PLAT OF SURVEY
3. FRANKLIN COUNTY ENGINEER, GIS, AUDITOR, & RECORDER ELECTRONIC DATA AVAILABLE



(C1) Δ = 59° 05' 52" (LT) R = 100.00' T = 56.69' L = 103.15' C = 98.63' C.B. = S 63° 49' 35" W	(C2) Δ = 13° 43' 34" (LT) R = 478.24' T = 57.56' L = 114.57' C = 114.30' C.B. = N 16° 21' 59" W	(C3) Δ = 13° 18' 57" (RT) R = 488.24' T = 56.99' L = 113.47' C = 113.22' C.B. = S 16° 09' 27" W	(C4) Δ = 67° 14' 57" (LT) R = 24.00' T = 15.96' L = 28.17' C = 26.58' C.B. = S 66° 51' 47" W	(C5) Δ = 14° 56' 59" (LT) R = 89.00' T = 11.68' L = 23.22' C = 23.16' C.B. = S 25° 45' 49" W	(C6) Δ = 15° 58' 26" (RT) R = 125.00' T = 17.54' L = 34.85' C = 34.74' C.B. = S 26° 16' 33" W
(C7) Δ = 29° 05' 27" (RT) R = 125.00' T = 32.43' L = 63.47' C = 62.79' C.B. = S 48° 48' 29" W	(C8) Δ = 34° 25' 31" (LT) R = 115.00' T = 35.63' L = 69.10' C = 68.06' C.B. = N 51° 28' 32" E	(C9) Δ = 15° 58' 26" (LT) R = 115.00' T = 16.14' L = 32.06' C = 31.96' C.B. = N 26° 16' 33" E	(C10) Δ = 31° 06' 54" (RT) R = 100.00' T = 27.84' L = 54.31' C = 53.64' C.B. = N 60° 50' 57" E	(C11) Δ = 49° 27' 30" (RT) R = 100.00' T = 46.06' L = 86.32' C = 83.67' C.B. = N 59° 00' 24" E	(C12) Δ = 16° 58' 07" (LT) R = 100.00' T = 14.92' L = 29.62' C = 29.51' C.B. = S 84° 53' 27" W



This Plat of Survey was prepared by Burgess & Niple, Inc., under the direct supervision of William C. LeRoy, P.S., Ohio License No. 7664 and is based on field surveys, centerline and boundary monument locations performed and certified by Steven L. Mullaney, P.S., Ohio License No. 7900, GPD Group, beginning in July, 2014.

BURGESS & NIPLÉ, INC.  
*William C. LeRoy*  
William C. LeRoy PS  
Ohio Registration No. 7664

12-14-2015  
Date



The location of all existing survey monuments used to determine centerlines, rights-of-way, and property lines as referenced herein were located in the field beginning in July, 2014 by GPD Group under the direct supervision of Steven L. Mullaney, Ohio Registered Surveyor No. 7900 and are based upon project control established by GPD Group for the Tremont Road Project.

GPD GROUP  
*Steven L. Mullaney*  
Steven L. Mullaney PS  
Ohio Reg. No. 7900

12-14-2015  
Date

D:\BNC\WIS\01\moint-bn.com\projectwise\Documents\pr53474\fra\000000\row\streets\RD008.dgn 12/14/15 7:20:07 AM leroy

RECEIVED  
 DEC 16 2015  
 Franklin County Engineer  
 Dean C. Ringle, P.E., P.S.  
 DATE: OCT. 14, 2015  
 R/W DESIGNER  
 R/W REVIEWER  
 RIGHT OF WAY PLAT FOR CITY OF UPPER ARLINGTON  
 0.029, 0.116, 0.637 & 0.801 ACRE TRACTS  
 PREPARED BY: BURGESS & NIPLÉ, INC.  
 5085 REED ROAD  
 COLUMBUS, OH 43220  
 1/1