



Evans, Mechwart, Hambleton & Tilton, Inc.
Engineers • Surveyors • Planners • Scientists
5500 New Albany Road, Columbus, OH 43054
Phone: 614.775.4500 Toll Free: 888.775.3648
emht.com

SURVEY OF ACREAGE PARCEL

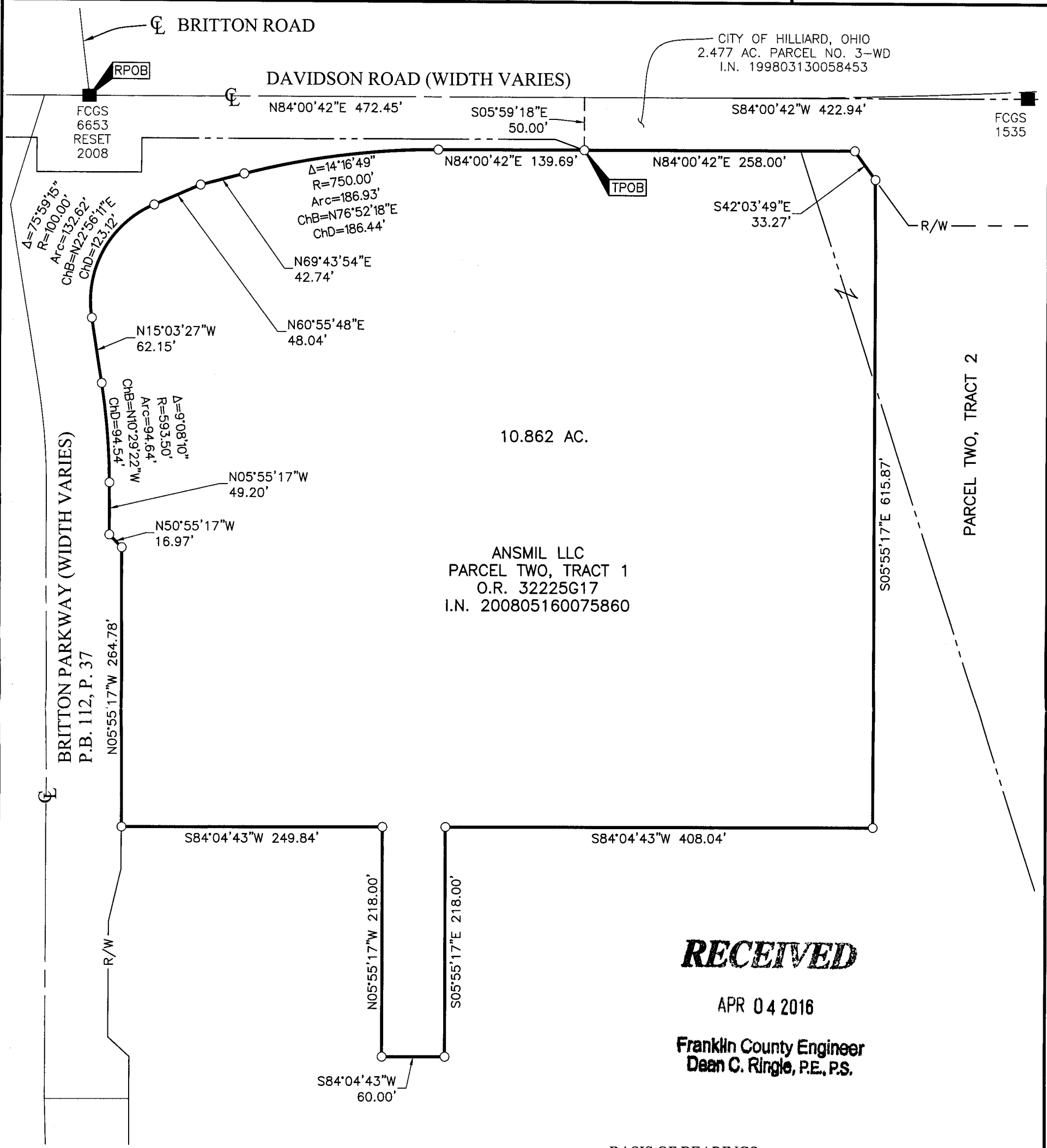
VIRGINIA MILITARY SURVEY NO. 4854

CITY OF HILLIARD, FRANKLIN COUNTY, OHIO

Date: March 11, 2016

Job No. 2015-1683

Scale: 1" = 100'



RECEIVED

APR 04 2016

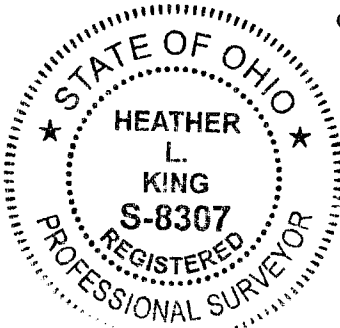
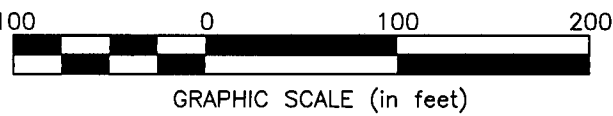
Franklin County Engineer
Dean C. Ringle, P.E., P.S.

BASIS OF BEARINGS:
Bearings are based on the Ohio State Plane Coordinate System, South Zone, as per NAD83 (1986 Adjustment). Control for bearings was from coordinates of monuments FCGS 0005 RESET and FCGS 0006, having a bearing of North 23° 37' 07" West, established by the Franklin County Engineering Department, using Global Positioning System procedures and equipment.

SURVEY NOTE:
This survey was prepared using documents of record, prior plats of survey, and observed evidence located by an actual field survey.

- = STONE FND.
- = MON. FND.
- = I.P. FND.
- = I.P. SET
- = MAG. NAIL FND.
- = MAG. NAIL SET
- ▲ = R.R. SPK. FND.
- △ = R.R. SPK. SET
- = P.K. NAIL FND.

I.P. Set are 13/16" I.D. iron pipes 30" long with cap inscribed EMHT INC.



By Heather L. King 4/4/16
Heather L. King Date
Professional Surveyor No. 8307

J:\2015\1683\DWG\04SHEETS\BOUNDARY\20151683-VS-BNDY-01.DWG plotted by WEBB, TEAGUE on 3/11/2016 2:44:53 PM last saved by TWEBB on 3/11/2016 2:44:32 PM