

F-3-B



Evans, Mechwart, Hambleton & Tilton, Inc.
Engineers • Surveyors • Planners • Scientists
5500 New Albany Road, Columbus, OH 43054
Phone: 614.775.4500 Toll Free: 888.775.3648
emht.com

SURVEY OF ACREAGE PARCEL

QUARTER TOWNSHIP 3, TOWNSHIP 1, RANGE 18
UNITED STATES MILITARY DISTRICT
CITY OF COLUMBUS, COUNTY OF FRANKLIN, STATE OF OHIO

Date:	April 5, 2016
Scale:	1" = 40'
Job No.	2015-0504

BASIS OF BEARINGS:

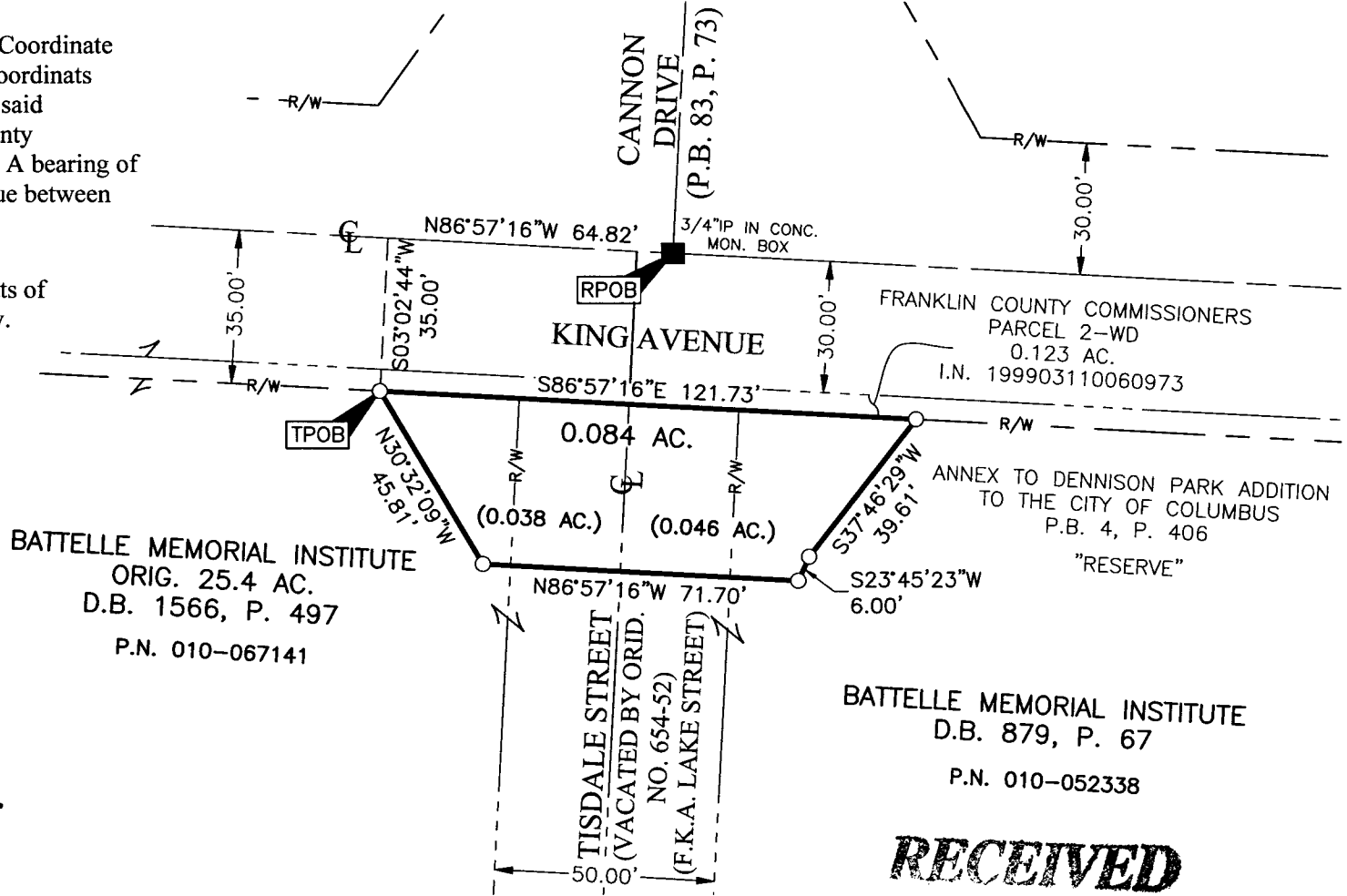
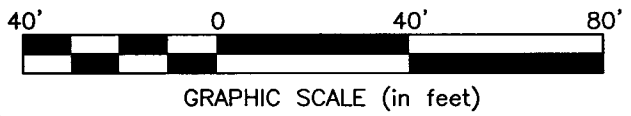
The bearings shown hereon are based on the Ohio State Plane Coordinate System South Zone as per NAD83 (1986 Adjustment). Said coordinates originated from a field traverse which was tied (referenced) to said coordinate system by Static GPS observations of Franklin County Engineering Department monuments COC4-83 and RINGLE. A bearing of South 86° 57' 16" East was held for that section of King Avenue between Olentangy River Road and Cannon Drive.

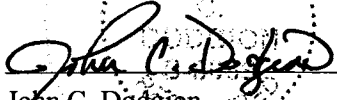
SURVEY NOTE:

This survey was prepared using documents of record, prior plats of survey and observed evidence located by an actual field survey.

- = MON. FND.
- = I.P. FND.
- = I.P. SET

I.P. Set are 13/16" I.D. iron pipe with cap inscribed EMHT INC



By 
 John C. Dodgion
 Professional Surveyor No. 8069

04/06/2016
Date

RECEIVED

APR 08 2016

County Engineer
John Ringle, P.E., F.S.