

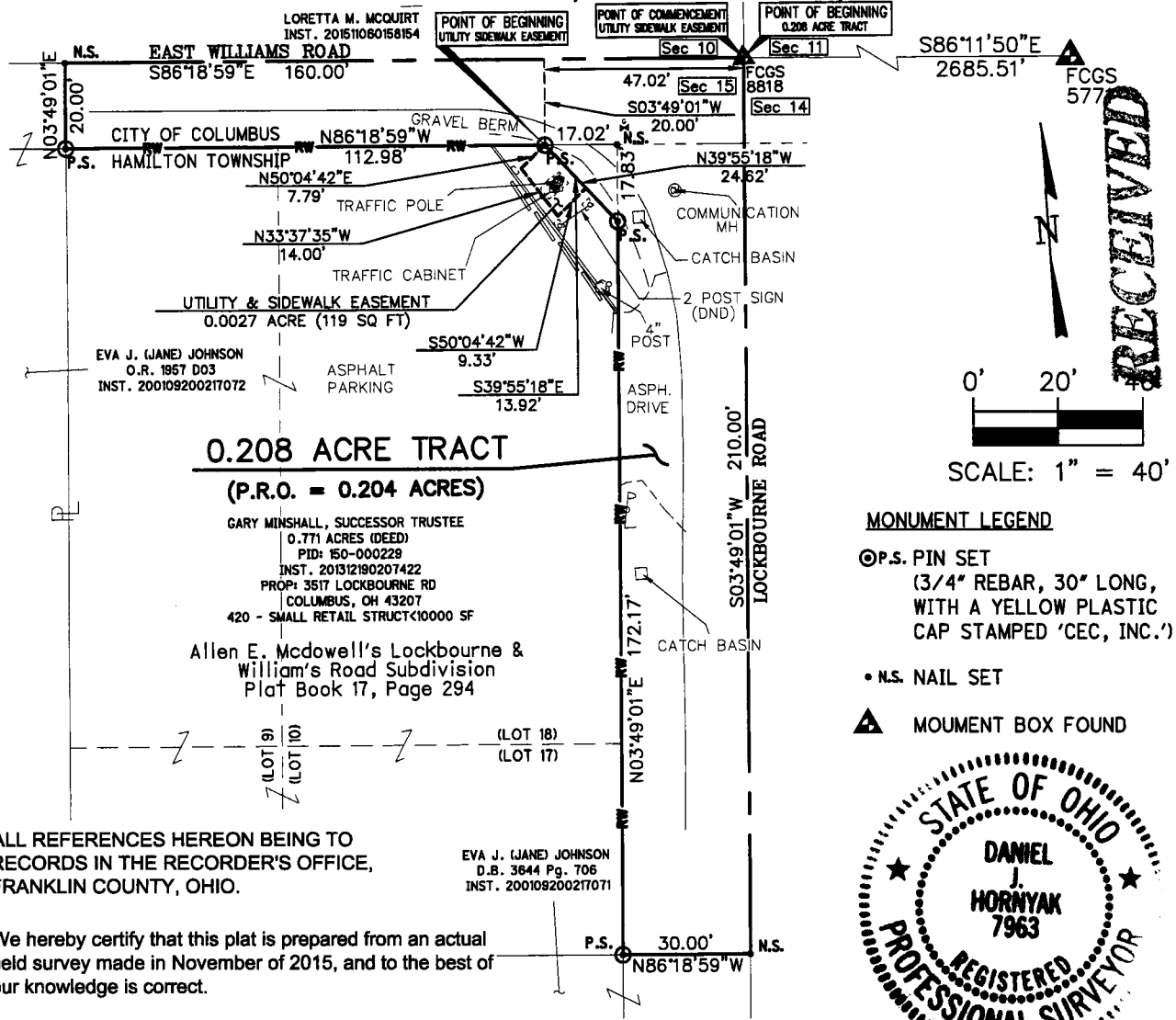
COLUMBUS ENGINEERING CONSULTANTS, INC.

CONSULTING ENGINEERS AND SURVEYORS

870 MICHIGAN AVENUE, COLUMBUS, OHIO 43215
PHONE: (614) 221-4500 FAX: (614) 221-0466

0.208 ACRE TRACT UTILITY & SIDEWALK EASEMENT

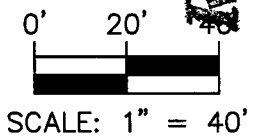
LOCATED IN QUARTER SECTION 15, TOWNSHIP 4, RANGE 22, MATHEWS SURVEY, CONGRESS LANDS, BEING PART OF LOTS 17 & 18 OF THE ALLEN E. MCDOWELL'S LOCKBOURNE & WILLIAM'S SUBDIVISION OF RECORD IN PLAT BOOK 17, PAGE 294, AND BEING OUT OF THE TRACT CONVEYED TO GARY MINSHALL, SUCCESSOR TRUSTEE IN INSTRUMENT 201312190207422, HAMILTON TOWNSHIP, FRANKLIN COUNTY, OHIO.



RECEIVED

APR 11 2016

Franklin County Engineer
Dean C. Fingle, P.E., P.S.



- MONUMENT LEGEND**
- ⊙ P.S. PIN SET
(3/4" REBAR, 30" LONG, WITH A YELLOW PLASTIC CAP STAMPED 'CEC, INC.')
 - N.S. NAIL SET
 - ▲ MONUMENT BOX FOUND



ALL REFERENCES HEREON BEING TO RECORDS IN THE RECORDER'S OFFICE, FRANKLIN COUNTY, OHIO.

We hereby certify that this plat is prepared from an actual field survey made in November of 2015, and to the best of our knowledge is correct.

COLUMBUS ENGINEERING CONSULTANTS, INC.

DANIEL J. HORNYAK
Registered Professional Surveyor No. 7963

04/08/16

Date

BASIS OF BEARINGS

BEARINGS ARE ESTABLISHED TO THE OHIO STATE PLANE COORDINATE SYSTEM - SOUTH ZONE (NAD83) USING GPS OBSERVATIONS PERFORMED IN NOVEMBER 2015 WITH A BEARING OF S86°11'50"E ALONG THE CENTERLINE OF EAST WILLIAMS ROAD, AND ALL OTHER BEARINGS CALCULATED FROM THIS MERIDIAN.