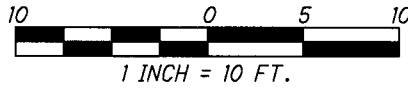




# TEMPORARY CONSTRUCTION EASEMENT 8A-T

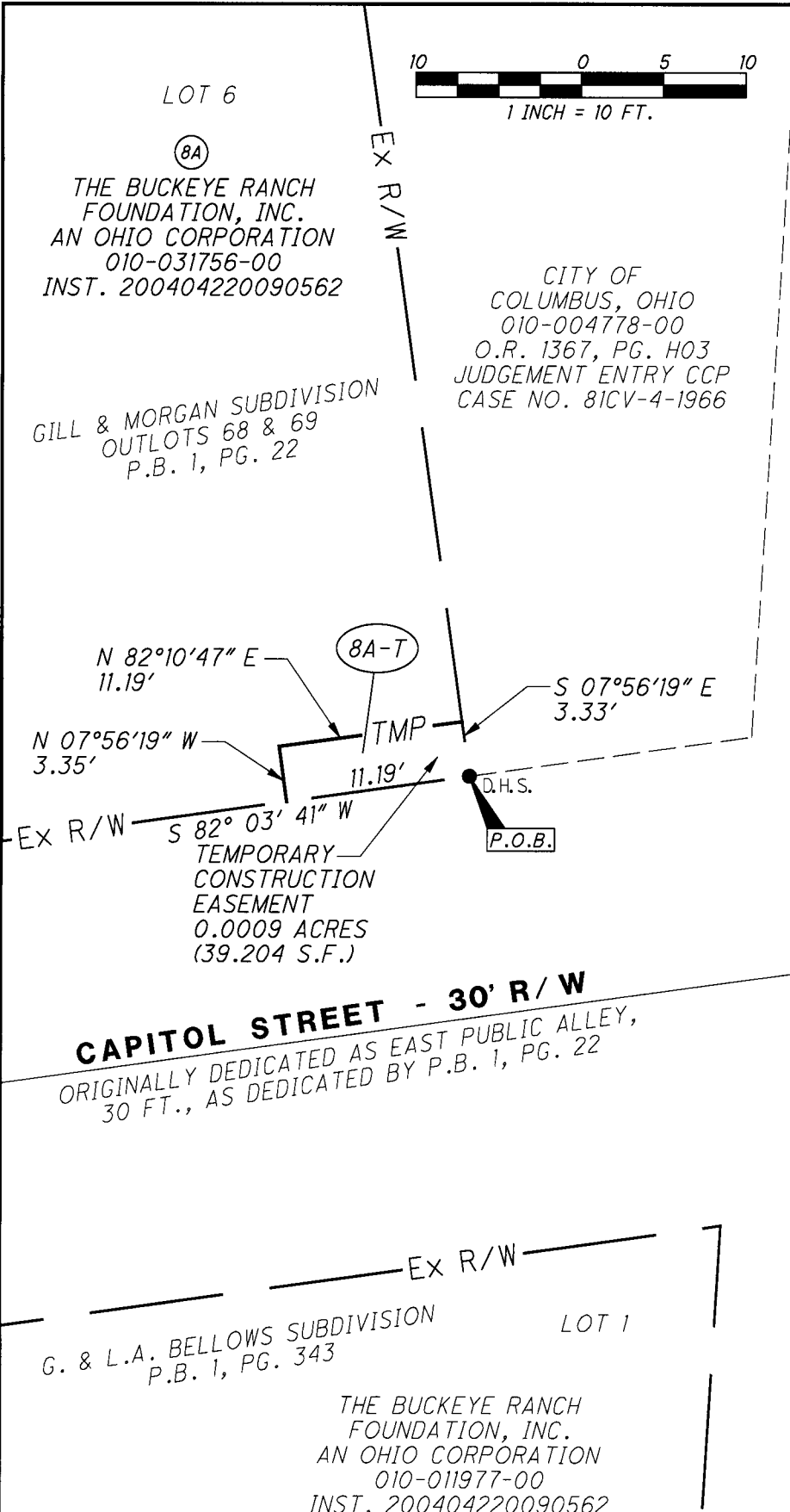
FRANKLIN COUNTY  
CITY OF COLUMBUS



**RECEIVED**

NOV 10 2015

Franklin County Engineer  
Dean C. Ringle, P.E., P.S.



**CAPITOL STREET - 30' R/W**  
ORIGINALLY DEDICATED AS EAST PUBLIC ALLEY,  
30 FT., AS DEDICATED BY P.B. 1, PG. 22

**PARSONS AVENUE - R/W VARIES**  
ORIGINALLY CREATED AS EAST PUBLIC LANE, 49.5 FT.,  
AS DEDICATED IN DEED BOOK "F", PAGE 332,  
DESTROYED BY FIRE, REPLATTED IN P.B. 3, PG. 247,  
ALSO REPRESENTED IN P.B. 14, PG. 27

**BASIS OF BEARINGS:**

BEARINGS ARE BASED ON THE BEARING BETWEEN  
FRANKLIN COUNTY ENGINEER'S MONUMENTS "FRANK43"  
AND "FRANK143" BEING S 87°56'15" E, AS MEASURED  
ON GRID NORTH, OF THE OHIO STATE PLANE COORDINATE  
SYSTEM, SOUTH ZONE (2011).

**PERTINENT DOCUMENTS USED:**

GILL & MORGAN SUBDIVISION - P.B. 1, PG. 22  
G. & L.A. BELLOWS SUBDIVISION - P.B. 1, PG. 343

**LEGEND:**

- P.O.B. POINT OF BEGINNING
- D.H.S. DRILL HOLE (SET)



*Steven L. Mullaney*  
STEVEN L. MULLANEY, P.S. 7900

11/9/2015  
DATE