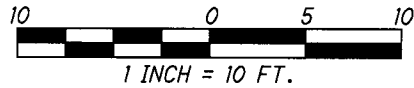




1.800.955.4731
 www.gpdgroup.com
GPD GROUP
 Claus, Pyle, Schomer, Burns & DeHaven, Inc.

PERMANENT SIDEWALK EASEMENT 8-P

FRANKLIN COUNTY
CITY OF COLUMBUS



LOT 6
 THE BUCKEYE RANCH
 FOUNDATION, INC.
 AN OHIO CORPORATION
 010-031756-00
 INST. 200404220090562

GILL & MORGAN SUBDIVISION
 OUTLOTS 68 & 69
 P.B. 1, PG. 22

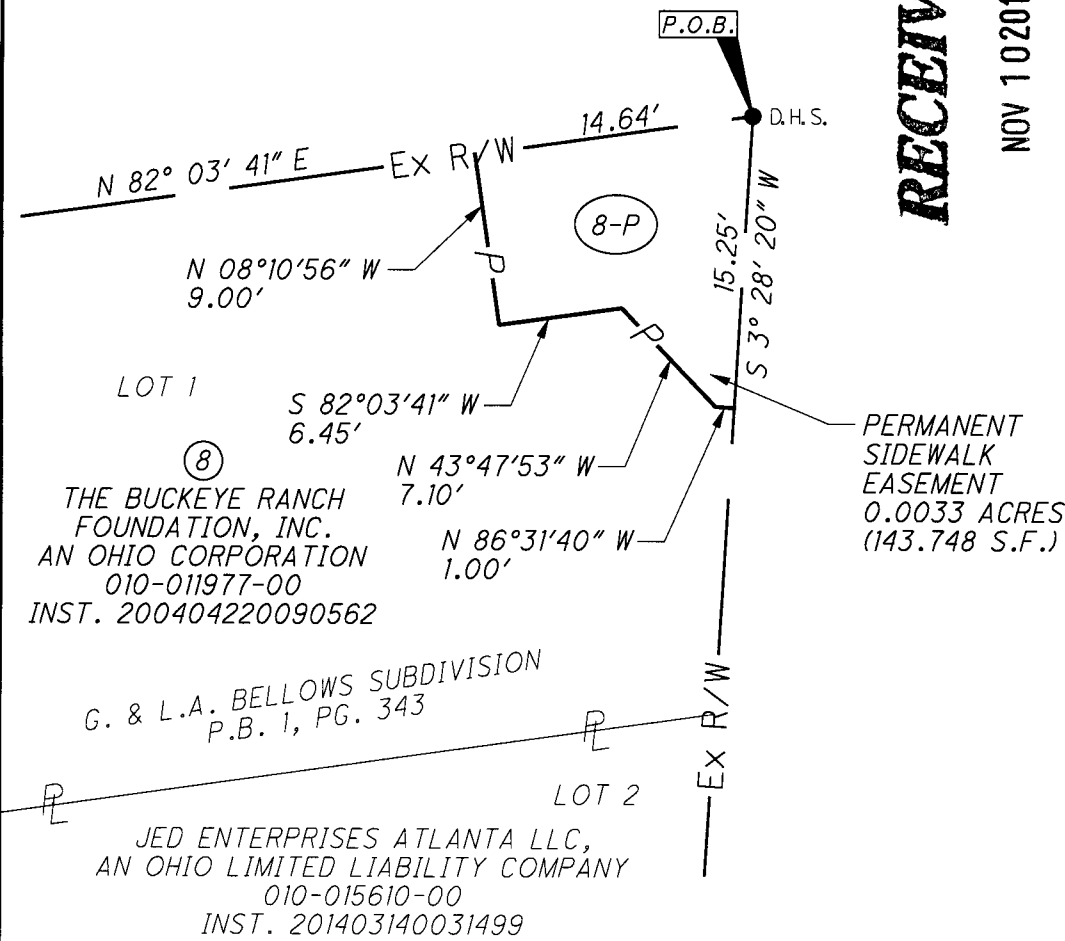
CITY OF
 COLUMBUS, OHIO
 010-004778-00
 O.R. 1367, PG. H03
 JUDGEMENT ENTRY CCP
 CASE NO. 81CV-4-1966

CAPITOL STREET - 30' R/W
 ORIGINALLY DEDICATED AS EAST PUBLIC ALLEY,
 30 FT., AS DEDICATED BY P.B. 1, PG. 22

RECEIVED

NOV 10 2015

Franklin County Engineer
 Dean C. Ringle, P.E., P.S.



PARSONS AVENUE - R/W VARIES

ORIGINALLY CREATED AS EAST PUBLIC LANE, 49.5 FT.,
 AS DEDICATED IN DEED BOOK "F", PAGE 332,
 DESTROYED BY FIRE, REPLATTED IN P.B. 3, PG. 247,
 ALSO REPRESENTED IN P.B. 14, PG. 27

LEGEND:

- P.O.B. POINT OF BEGINNING
- D.H.S. DRILL HOLE (SET)

PERTINENT DOCUMENTS USED:

- GILL & MORGAN SUBDIVISION - P.B. 1, PG. 22
- G. & L.A. BELLOWS SUBDIVISION - P.B. 1, PG. 343

BASIS OF BEARINGS:

BEARINGS ARE BASED ON THE BEARING BETWEEN
 FRANKLIN COUNTY ENGINEER'S MONUMENTS "FRANK43"
 AND "FRANK143" BEING S 87°56'15" E, AS MEASURED
 ON GRID NORTH, OF THE OHIO STATE PLANE COORDINATE
 SYSTEM, SOUTH ZONE (2011).



Steven L. Mullaney
 STEVEN L. MULLANEY, P.S. 7900

11/9/2015
 DATE