

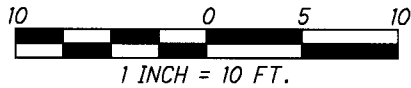


1.800.955.4731
www.gpdgroup.com
GPD GROUP
Glaus, Pyle, Schomer, Burns & DeHaven, Inc.

PERMANENT SIDEWALK EASEMENT 3A-P

FRANKLIN COUNTY
CITY OF COLUMBUS

OAK STREET - R/W VARIES
40 FT. DEDICATED BY P.B. 1, PG. 22

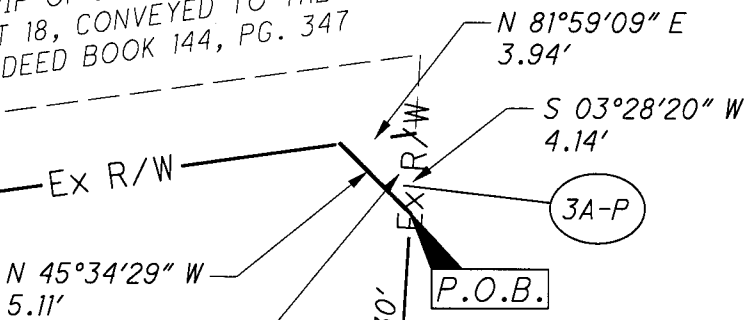


LEGEND:

- I.P.F. 5/8" REBAR (FOUND)
- D.H.S. DRILL HOLE (SET)
- P.O.C. POINT OF COMMENCEMENT
- P.O.B. POINT OF BEGINNING



STRIP OF LAND OFF OF THE NORTH SIDE OF
LOT 18, CONVEYED TO THE CITY OF COLUMBUS
IN DEED BOOK 144, PG. 347



PERMANENT
SIDEWALK
EASEMENT
0.0002 ACRES
(8.712 S.F.)

(3A)

C & W INVESTMENT CO. 1, LLC,
AN OHIO LIMITED
LIABILITY COMPANY
010-003708-00
INST. 201312240209487

N 03°28'20" E

PARSONS AVENUE - R/W VARIES
ORIGINALLY CREATED AS EAST PUBLIC LANE, 49.5 FT.,
AS DEDICATED IN DEED BOOK "F", PAGE 332,
DESTROYED BY FIRE, REPLATTED IN P.B. 3, PG. 247,
ALSO REPRESENTED IN P.B. 14, PG. 27

PERTINENT DOCUMENTS USED:

- DESLER'S & SINK'S SUBDIVISION - P.B. 3, PG. 423
- GILL & MORGAN SUBDIVISION - P.B. 1, PG. 22

BASIS OF BEARINGS:

BEARINGS ARE BASED ON THE BEARING BETWEEN
FRANKLIN COUNTY ENGINEER'S MONUMENTS "FRANK43"
AND "FRANK143" BEING S 87°56'15" E, AS MEASURED
ON GRID NORTH, OF THE OHIO STATE PLANE COORDINATE
SYSTEM, SOUTH ZONE (2011).

LOT 18
LOT 19

(3A)

C & W INVESTMENT CO. 1, LLC,
AN OHIO LIMITED
LIABILITY COMPANY
010-043483-00
INST. 201402110017005

GILL & MORGAN SUBDIVISION
P.B. 1, PG. 22

CITY OF COLUMBUS, OHIO
A MUNICIPAL CORPORATION
010-044136-00
O.R. 2941, PG. J01

Ex R/W

I.P.F.

5/8" REBAR

(22.16')

P.O.C.

D.H.S.

LOT 19
LOT 20



RECEIVED

NOV 10 2015

Franklin County Engineer
Dean C. Ringle, P.E., P.S.

Steven L. Mullaney
STEVEN L. MULLANEY, P.S. 7900

11/9/2015
DATE